

COMMONWEALTH JUBILEE CELEBRATIONS, 1951



EXHIBITION
of
QUEENSLAND ART
CATALOGUE

Arranged by
The State Arts Sub-Committee, Commonwealth Jubilee
Celebrations, 1951

QUEENSLAND NATIONAL ART GALLERY, BRISBANE

10th September to 7th October, 1951

FOREWORD

The Exhibition of Queensland Art has been arranged by the State Arts Sub-Committee, Commonwealth Jubilee Celebrations, to illustrate the development of Painting, Sculpture, and some of the Graphic Arts, from the early days of the Colony up to the present.

It is the first occasion that such a comprehensive display of Queensland Art has been presented to the public. The Exhibition includes examples by Queenslanders whose works are widely known and appreciated throughout Australia, as well as a selection of the works of lesser known artists and promising young artists.

ACKNOWLEDGMENTS

The State Arts Sub-Committee for the Commonwealth Jubilee Celebrations wishes to thank the Trustees of the Queensland National Art Gallery for making the Gallery available for the Exhibition, and for lending many of the works of art which are being exhibited. The Sub-Committee also wishes to thank the Trustees of the National Gallery of Victoria, private collectors, artists, and others who have lent works and helped so much with the organization of this Collection of Queensland Art.

E. K. Sholl,

Convener, State Arts Sub-Committee.

ORGANIZATION

The Jubilee Exhibition of Queensland Art was organized by a Working Group acting on behalf of the State Arts Sub-Committee. The Working Committee included two members of the State Arts Sub-Committee, Messrs. Robert Haines and C. M. B. Van Homrigh, who co-opted the remaining members.

WORKING GROUP

C. M. B. VAN HOMRIGH
(Chairman)
ROBERT HAINES

E. LILLIAN PEDERSEN
W. G. GRANT

VIDA LAHEY
FRANK SHERRIN

THE DEVELOPMENT OF ART IN QUEENSLAND

By Vida Lahey

In the early days of settlement in Queensland the furnishings and ancestral pictures which might be found in the homes of the professional and official classes were the only tokens of the existence of art at all, except for the craft work and weapons of the aborigines, which, being entirely unnoticed by the white settlers, counted for nothing.

Since then great changes have taken place, extremely slowly in the first phases, but accelerating more and more rapidly in the latest period, when ease of communication with other States and with other countries, produced in the last ten years or so a more developed outlook, and an awareness of standards far different from those which were comfortably accepted when Brisbane was an out of the way corner to the rest of Australia.

Before 1881 no definite beginning can be discerned. In that year some art classes were begun at the School of Arts, and from this embryo the Technical College developed later. Six years after this the Queensland Art Society was founded, its first exhibition being held in 1888. Seven years then passed before the nucleus of the National Art Gallery was established in the Old Town Hall (now Carnegie's Buildings in Queen Street). Mr. Godfrey Rivers, who was Principal of the Technical College and President of the Art Society at that date, fitted it up at his own expense. The Gallery was officially opened in 1895. Five years later it was moved into a long narrow room in the Executive Buildings, George Street.

So we find that fifty years ago the three official means of propagating art, viz.— Art School, Art Society, and Art Gallery had made their beginnings; but it is the Art Gallery, although last in the field, which has made the most spectacular advances: not by steady progression, but by a series of jumps. It certainly got off with a flying start, for in the first ten years of its existence, owing to handsome grants from the Government, it was able to fill its walls with large and in some cases quite important pictures, illustrating the art of the period, for instance "The Drove" by Arnesby Brown. But such palmy days did not last long as the grant petered out to almost nothing, and therefore these acquisitions were practically the last for thirty years, when the Queensland Art Fund which had been established to awaken interest in art by bringing into Brisbane works from great art centres, bought £1000 worth of pictures for it, through the National Art Collections Fund in London. As evidence of the prevailing ideas of the time, these pictures, including "The Everlasting Hills" by Sir D. Y. Cameron, and works by Sir Charles Holmes and Eric Kennington, excited much adverse criticism though they are now classed among the best in the Gallery. It may be noted that not long before this, students from abroad had begun to return bringing enthusiasm and new ideas to Brisbane.

About this time several notable events occurred. The City Hall was built, and in 1931 was officially opened. This engendered greater civic pride, and many of the largest buildings in Queen Street being erected soon afterwards, Brisbane began to assume the appearance of a capital city instead of a large provincial town.

The same year the National Art Gallery was moved to its present temporary quarters, which, unsuitable though they were, was a big advance on the earlier accommodation.

A few years later the Darnell Bequest was obtained through the strenuous efforts of the Queensland Art Fund in raising the large sum of money which was necessary to obtain it under the terms of the will. This resulted in £15,000 being made available to the Art Gallery.

This Bequest, together with the regular addition of important pictures from the Godfrey Rivers Bequest, and numerous gifts from the late Miss Treweeke, has increased the size of the collection very much. The Godfrey Rivers Bequest since 1935 now amounts to twenty-four works of art, including many major works, for instance, William Dobell's "Cypriot" and two large pictures by Eric Wilson, while thirty-nine paintings including pictures by Charles Cundall, Rupert Bunny and Arnold Shore, and fourteen works in Black and White; have been donated by Miss Treweeke during the last nineteen years. A generous Bequest from her of £2000 has just been announced.

But perhaps the most important happening of all occurred, when less than two years ago ample funds were obtained from the Government, and a Director was appointed to the Gallery. As a result a change was wrought in the appearance of the interior of the Gallery which was breath-taking, and the display is now acknowledged to be the most up-to-date and attractive in the Commonwealth. The arrangement, and the colour and texture of the walls had certainly been immensely improved some time before, but to those who remembered the early days in that building when the pictures were hung three deep on walls of painted plywood, criss-crossed with inch-wide coverstrips and three rows of piping for supporting the pictures, the difference is stunning.

The Art Society, which began seven years earlier than the Gallery, has pursued its course more or less steadily since the beginning of the century, holding annual exhibitions of its members' works, occasional lectures, which are now a monthly feature, and for a long period a life class, which has just been revived. In 1900 it received a Government grant of £100 a year, and until this was discontinued, offered prizes for the best work in the annual shows. Its activities have always been much impeded by lack of suitable accommodation, and in 1911 the sum of £500 was raised to establish a Building Fund. This sum has been enormously increased by careful administration and increasing property values, and it now stands at £10,500, certainly a record for an Art Society in Australia. A striking innovation which was inaugurated some years ago by this Society is the encouragement given to its younger members, by annually sponsoring an independent exhibition of their work. The publication of a quarterly magazine, "The Art News," is another innovation.

The Half Dozen Group of Artists was established in 1941. Exhibitions have been held ever since in which craft has been featured in conjunction with pictures. This Group includes interstate artists in its membership. Activities have included gifts to seven institutions and six Junior Art Scholarship awards of £10 with tuition fees for a year. Also two Travelling Art Scholarships of £150 each in conjunction with the Queensland Wattle League (which was incorporated in the Group in 1944).

Several Travelling Scholarships had been awarded some time previously in Brisbane. The first two of these amounted to £250 per annum for a period of three years, and were given by the Queensland Wattle League, for Sculpture and Architecture respectively, and in 1938 a Travelling Grant was obtained by the Queensland Art Fund from the Carnegie Corporation of New York, and used for sculpture. At the moment a scholarship of £300 offered by the Royal Queensland Art Society and its Younger Group is being finalised. The initiative in this was taken by the latter, which raised half the money.

With regard to the Central Technical College Art School, we find that the numbers have increased enormously. With accommodation as inadequate as it is, it would be impossible to make of it a fully developed Art School with scope commensurate to the growing recognition of the importance of art in education. Evidence of this recognition is shown in the fact that a Chair of Architecture has recently been established in the University of Queensland, and that in the same year the status of art was raised sufficiently to become a Scholarship subject in the Senior University Examinations, whereas twenty years earlier it had no place at all in the curriculum. In this connection the establishment of an Art Gallery there, is well worthy of note. The collection which is being acquired by means of an annual grant allocated from the John Darnell Bequest to the University now comprises two hundred and fifty paintings and prints. The display of these works only awaits the completion of the Gallery provided for the purpose in the University at St. Lucia.

Collections of works of art have been established also at the Teachers' Training College and the Central Technical College. In both cases the Government grants have been supplemented by the students themselves.

Another instance of the recognition of the need for art in education is the increasing attention which is given to art for children, particularly on its creative side, in picture-making and design. The Teachers' Training College has been oriented in that direction for a number of years and an increasing number of young teachers from it should help to bring about a "new deal" for children in the future.

As for those other means of enlightenment which are so potent now, viz.: books on art, reproductions, and incoming exhibitions, they were practically non-existent at the beginning of the century. Books on art certainly existed—in the School of Arts, the bookshops, the Public Library, but how few in numbers, and comparatively speaking, how dull and meagre!

To give some statistics—the School of Arts during the first forty-five years of its existence purchased on an average little more than one book a year, while in the last five years nearly two hundred books have been added to the shelves. In the Public Library too we find the same pattern of development with amazing results. At the opening in 1901 very few art books were in the collection. Forty years later there were just under seven hundred, but in the last ten years nearly double that number were purchased, and with the addition of a gift of over five hundred books from the Art Library, the books on art now number almost two thousand five hundred. In the book trade too the same change is seen. Every book shop now has a section devoted to art, some in fact specialising in art books and reproductions.

In helping to build up these results we might note the Art Library which was obtained for Brisbane from the Carnegie Corporation of New York by the Queensland Art Fund in 1936 (by virtue of work previously done for art), also the weekly lunch-time Talks at the Library, which commencing in 1937, and continuing for four years, helped considerably in widening interest in art and art books. From these Friday lectures stemmed a series of courses on the History of Art which were afterwards undertaken privately. Mention might also be made of the thousands of art-conscious American troops whose demands in 1943 helped to stimulate the book sellers to regard art seriously, and thus satisfy and at the same time create a greatly increased demand for art books.

The Fine Art section of books and reproductions in the University Library and the collection of reproductions and books in the Teachers' Training College must not be forgotten either.

The appreciation of art through books, reproductions, and lectures is easily merged into the enjoyment of art as seen in exhibitions. They too were almost unknown in the early days, and occurred only occasionally, in later years, but have increased tremendously in the last decade. They are of two kinds, the incoming and the outgoing. The first of the former came nearly fifty years ago and consisted of a very fine collection of British paintings, the expense of which was guaranteed by a special committee under the leadership of Mr. Rivers. The first outgoing exhibitions were those sent from the Art Gallery to the larger towns of Central and Western Queensland in 1907 and 1909. Exhibitions were again sent from it on three occasions during the forties. The last of these displays was an Exhibition on wheels, viz., the Jubilee Art Train, which left Brisbane early this year bearing a beautifully presented selection of Australian pictures to tour Queensland for nine months, visiting about a hundred towns.

In the reverse direction we may note that on the removal of the Art Gallery to its present quarters in 1931 a large collection of pictures was brought from the National Art Galleries of Victoria and New South Wales by the Queensland Art Fund and displayed in the premises in George Street which had just been vacated by the Gallery. This was the first Exhibition of this type since 1900. 1950-51 has been marked by great developments in this direction, and the National Gallery in that period has presented an impressive array of important exhibitions, beautifully shown.

Turning to the private galleries and exhibitions we find the same thing—a very great increase in the last few years, and in contrast to the long period of years in which the Gainsborough Gallery was the only one in Brisbane, there are now four private galleries functioning, with continuous exhibitions almost all the year round.

But it is not exhibitions and galleries alone which determine the status of art in a city, and if a true estimate is to be made, we should consider not only the sculpture and paintings in this exhibition, but the architecture and the sculptural decorations in our town; the stained glass, wood carving and murals in our churches, and the taste displayed in our homes. Whatever that estimate may be, improvement is needed. This can be reached in only one way, viz., more and better education from all the various institutions whose course we have been tracing.

COMMONWEALTH JUBILEE CELEBRATIONS BRISBANE, 1951

EXHIBITION of QUEENSLAND ART

PAINTING

PETER ABRAHAM, born Brisbane, 1927; studied under P. Stanhope Hobday and Melville Haysom, and at the National Gallery School, Melbourne; member of the Royal Queensland Art Society; at present in Melbourne.

1. **SUBURBAN SUNDAY, MELBOURNE**, Oil. Lent by Mrs. D. L. Abraham.

DOUGLAS SHENTON ANNAND, born Toowoomba, 1903; studied at the Central Technical College, Brisbane, under Martyn Roberts; commenced studying Commercial Art in Sydney in 1925; member of the Society of Artists, the Contemporary Art Society, Sydney, and the Society of Industrial Artists, London; won the Sulman Prize twice; principal designer for the Australian Pavilion, New York World Fair; won two medals, A.C.I.A.; assisted in murals on the "Orcaedes" and the "Oronsay"; represented in all principal Art Galleries in Australia; has resided in Sydney for some years.

2. **DUSK ON THE ATHERTON TABLELAND**, Water-colour.
Lent by Col. F. W. G. Annand.
3. **FISHERMAN'S HUT, TUGGERAH, N.S.W.**, Water-colour.
Lent by Col. F. W. G. Annand.

CAROLINE BARKER, born Melbourne, Victoria; studied at the National Gallery School, Melbourne, the Byam Shaw School, London, and the Royal Academy Schools, London; exhibited at the Paris Salon; life member and Councillor of the Royal Queensland Art Society.

4. **PORTRAIT (T. Lewis Esq.)**, Oil. Lent by the Artist.

WILLIAM RUBERY BENNETT, born Brisbane, 1893; studied at the Balfour School; member of the Royal Queensland Art Society and the Royal Art Society of N.S.W.; represented in the National Gallery of Victoria; resides in Sydney.

5. **LANDSCAPE, Oil.** Lent by the Artist.
5a. **BURRAGARANG VALLEY, N.S.W., Oil.** Lent by Mrs. L. J. Harvey.

VINCENT BROWN, born Brisbane; studied at the Slade School, London, under Prof. R. Swabe, the Grosvenor School, London, under Ian McNab, and the Ruskin School of Drawing under Albert Rutherston; practised theatre decor with Komissarjefski; received Diploma of Fine Art, London University; returned to Brisbane, 1940; member of the Half Dozen Group of Artists; went to London, 1948, to fulfil commissions; at present in England; represented in the Queensland National Art Gallery.

6. **LANDSCAPE, Water-colour** Lent by Dr J. V. Duhig.
7. **GASLIGHT, Oil.** Lent by the Teachers' College, Brisbane.

HILDA MARY BURSTON, born Roma, Queensland, 1884; studied Brisbane Technical College under Godfrey Rivers and Miss Anderson; later with Mrs. Penleigh Boyd, but chiefly with Vida Lahey; member of the Royal Queensland Art Society.

8. **CANNAS, Oil.** Lent by the Artist.

WILLIAM BUSTARD, born England, 1894; studied at Scarborough School of Art Yorkshire; also London Schools of Art; exhibited Royal Academy, London; life member, Vice President, and Past President of the Royal Queensland Art Society; represented in the Queensland National Art Gallery; received R.Q.A.S. Jubilee Medal, and the Coronation Medal, 1937; as a designer of stained-glass windows, is represented in four Australian Cathedrals.

9. **FARM AT THE GAP, ENOGGERA, Water-colour.** Lent by the Artist.
10. **TOOWOOMBA RANGE, Water-colour.** Lent by the Artist.
11. **INTERIOR (St. John's Cathedral), Oil.**
Queensland National Art Gallery.

NUTTER BUZACOTT, born Perth, W.A., 1905; studied under Ian McNab, London, and at Westminster L.C.C. Schools, London; member of the Royal Queensland Art Society, and the Half Dozen Group of Artists, Brisbane; also A.C.I.A.; won Crouch Memorial Prize, Ballarat, 1940; represented in National Gallery of Victoria.

12. **FARMHOUSE, Water-colour.**
Lent by the University of Queensland, Darnell Collection.

JOHN HEPBURN CADELL, born Queensland; studied at Brisbane Technical College, also in Melbourne and England; member of the Royal Queensland Art Society; now deceased.

13. **STILL LIFE, Oil.** Lent by W. G. Grant Esq.

BETTY CAMERON, born Brisbane, 1931; studied under Patricia Prentice and Rodier Rivron; President, Brisbane Younger Artists' Group, Royal Queensland Art Society.

14. **THE ANTHEM, Oil.** Lent by the Artist.

ROBERT CAMPBELL, born Edinburgh, 1902; studied in Sydney, Paris, and London; member Australian Water-colour Institute, and the Perth Society of Artists; Director, Queensland National Art Gallery (1949-51); now Director, National Art Gallery of South Australia; represented in the principal Australian Galleries.

15. **GLASSHOUSE MOUNTAINS, Water-colour.**
Lent by the Teachers' College, Brisbane.
16. **TIBROGARGAN, Water-colour.** Lent by the "Courier-Mail."
17. **FLOOD WATERS, Esk Valley, Tas., Water-colour.**
Queensland National Art Gallery.

HERMAN CARSTENS, born Mt. Tamborine, 1923; member Royal Queensland Art Society, and Toowoomba Art Society.

18. **BOAT SHED, CALOUNDRA, Oil.** Lent by the Artist.

MARGARET CILENTO, born at Sydney; studied at the East Sydney Technical College, in New York at the Brooklyn Museum Art School (painting), and Atelier 17 under Stanley Hayter (engraving), continuing with the latter at Florence; studied in Paris with a French Government Scholarship; won a Half Dozen Group of Artists' Travelling Scholarship, 1947; returned to Australia 1951; member of the Half Dozen Group of Artists; represented in the Queensland National Art Gallery, Darnell Collection, Queensland University, and the Teachers' College, Brisbane.

19. **ABSTRACTION, ROCKS AND TREES**, Gouache. Lent by the Artist.
 20. **LANDSCAPE, SOUTH FRANCE**, Gouache. Lent by the Artist.
 21. **INTERIOR**, Tempera. Lent by the Artist.

EDWARD COLCLOUGH, 1866-1950, born Brisbane; studied under John A. Clark at the Brisbane Technical College; honorary secretary of the Queensland Art Society, 1899-1903; New Society of Artists, 1904-16; and Queensland Authors' and Artists' Association, 1921-31; trustee and honorary secretary, Queensland National Art Gallery; represented in the latter gallery and in the Port Adelaide Gallery.

22. **THREATENING STORM**, Water-colour. Lent by J. Colclough Esq.

DOROTHY COLEMAN, born at Croydon King, North Queensland; studied at the Central Technical College, Brisbane, under Martyn Roberts, and Mrs. Muntz Adams, Oscar Fristrom, and later, with Caroline Barker; member of the Royal Queensland Art Society, and the Brisbane Group of Artists.

23. **PORTRAIT**, Miss Augusta Hobday, Oil.
 Lent by the Royal Queensland Art Society.

LAWRENCE COLLINSON, born Leeds, England, 1925; studied at the Brisbane Technical College, with P. Stanhope Hobday, and at the Julian Ashton Art School. Co-founder of the Miya Studio (Group of Artists).

24. **DUSTED MINER**, Gouache. Lent by the Artist.

WILSON COOPER, born Combs, Suffolk, England, 1912; self taught; member of the Half Dozen Group of Artists, and the Brisbane Group of Artists.

25. **MOUNT BARNEY**, Water-colour. Lent by the Artist.
 26. **BREAKFAST CREEK**, Water-colour. Lent by the Artist.

KATHLEEN COREN, studied with Caroline Barker, Vida Lahey, and at the Rodier Rivron School; member of the Brisbane Group of Artists.

27. **PORTRAIT OF A MAN**, Oil. Lent by Mrs. W. Acton.

DON COWEN, born Brisbane, 1920; studied under Melville Haysom, and at the Central Technical College, Brisbane; member of the Royal Queensland Art Society.

28. **BRISBANE RIVER**, Oil. Lent by the Artist.
 29. **BEACHED LUGGER, CAIRNS**, Water-colour. Lent by the Artist.

ROY DALGARNO, born Melbourne, 1910; studied at Melbourne Gallery School, East Sydney Technical College, and the Royal Art Society; member of the Contemporary Art Society, and the Studio of Realist Art, Sydney; represented in the National Gallery of N.S.W. and Queensland, Broken Hill, and Toowoomba Galleries; at present travelling abroad.

30. **MEN AT WORK**, Oil. *For many years has worked abroad.*
 Lent by the University of Queensland, Darnell Collection.

31. **SMOKO**, Oil. Queensland National Art Gallery.

THOMAS PERCY EAGLES, born in England, studied at the Royal Art Society, Sydney; member of the Royal Queensland Art Society, and the Half Dozen Group of Artists; contributed drawings to the "Bulletin" and "Smith's Weekly".

32. **MARGARET**, Oil Sketch. Lent by Mrs. Andrew Pedersen.

MONA ISABELLE ELLIOTT, born at Toowoomba; practically self taught except a short term with Vida Lahey; member of the Half Dozen Group of Artists; Past President of the Arts and Crafts Society, Queensland.

33. **MACLEAY STREET, POTT'S POINT**, Oil. Lent by Mrs. P. E. Allen.

MARION FINLAYSON, born Sunderland, England; studied under Enid T. L. Dickson; member of the Brisbane Group of Artists, and the Half Dozen Group of Artists.

34. **THE BRONZE VASE**, Pastel. Lent by Mrs. P. E. Allen.

OSCAR FRISTROM, 1856-1918, born Carlskrona, Sweden; studied at the Royal Art School, Stockholm; one of the founders of the Queensland Art Society in 1887; President of the New Society of Artists, 1904; President of the Queensland Art Society, 1918; represented in the National Galleries of S.A. and Queensland, the Queensland Museum, and the Historical Society's Collection, Newstead House.

35. **STUDY OF AN ABORIGINE**, Oil. Queensland National Art Gallery.



STILL LIFE

ELLA FRY (nee Robinson), born Brisbane; studied at East Sydney Technical College; member of the Perth Society of Artists, W.A.; resides in W.A.

36. **MICHAEL**, Oil. Lent by Dr. Ernest Beech of Perth.

BESSIE GIBSON, born Ipswich, Queensland; studied in Brisbane under Godfrey Rivers; later studied and painted for many years in Paris where she was influenced by French painting; painted and travelled in Italy; member of the Royal Queensland Art Society; returned to Brisbane after World War II.

37. **VENICE**, Oil. Queensland National Art Gallery.
38. **STILL LIFE**, Oil. Lent by the Artist.
39. **THE CONNOISSEUR**, Water-colour. Queensland National Art Gallery.

C. G. GIBBS, born Yackandandah, Victoria, 1906, studied at the Technical Art School, Ballarat; member of the Royal Art Society of N.S.W.; trustee of Queensland National Art Gallery; Chief Instructor, Art Department, Central Technical College since 1938.

40. **WATERFRONT, NEWSTEAD**, Water-colour. Lent by Russell Doucette Esq.

RICHARD GODFREY RIVERS, 1859-1925, born Plymouth, England, studied at the Slade School under Professor Legros; Principal and Chief Instructor of the Technical College Art School, Brisbane, from 1890 to 1915; President of the Queensland Art Society, 1892-1902, 1904-1909, 1910-11; Honorary Curator of the Queensland National Art Gallery from its inception in 1895 to 1914; settled in Hobart in 1915; represented in the National Galleries of N.S.W. and Queensland.

41. **THE JACARANDA**, Oil. Queensland National Art Gallery.
42. **FLORENCE**, Oil. Queensland National Art Gallery.

GWENDOLYN MURIEL GRANT, born Ipswich; studied at the Technical College, Brisbane, under Godfrey Rivers; National Gallery School, Melbourne; life member of the Royal Queensland Art Society, and Victorian Artists' Society.

43. **WINTER SUNSHINE**, Oil. Queensland National Art Gallery.
44. **PORTRAIT**, Oil. Lent by the Lyceum Club.



BEACH SCENE

Water-colour by W. G. Grant

WILLIAM GREGORY GRANT, born Brisbane; studied at the Brisbane Technical College; life member of the Royal Queensland Art Society and the Victorian Artists' Society; received the R.Q.A.S. Jubilee and Coronation Medals in 1937 for services rendered to art in this State.

45. **STILL LIFE**, Water-colour. Lent by Mrs. Lamont.
46. **BEACH SCENE**, Water-colour. Lent by the Artist.
47. **MORNING**, Oil. Lent by the Artist.

ALISON GREENE, born in England; studied under Godfrey Rivers and J. L. Watts; South Kensington Art School; Paris, at studio of Edwin Scott; exhibited regularly at the Paris Salon; was elected Associe of the Societe des Beaux-Arts 1924, and Societaire in 1928; exhibited at the Royal Academy; returned to Brisbane 1946.

48. **BALLET DANCER, JANIA NEPO**, Oil. Lent by the Artist.
49. **THE HARBOUR, CHERBOURG**, Oil. Lent by the Artist.
50. **PLACE AU CHATEAU**, Oil. Lent by the Artist.

HARRY BROMILOW HARRISON, 1878—?, born Geelong; studied at the Brisbane Technical College, and in Melbourne; member of the Royal Queensland Art Society and the Victorian Artists' Society; represented in the principal Australian Galleries; died in Melbourne.

51. **PORTRAIT**, Oil. Queensland National Art Gallery.
52. **VICTORIAN LANDSCAPE**, Oil. Lent by W. G. Grant, Esq.
53. **ROSES**, Oil. Lent by W. G. Grant, Esq.

MELVILLE HAYSOM, born Melbourne, Victoria, 1900; studied at the National Gallery School, Melbourne; Vice-President of the Royal Queensland Art Society; member of the Half Dozen Group of Artists; represented in the Queensland National Art Gallery.

54. **END OF THE ROAD**, Oil. Lent by the Industrial High School.
55. **PORTRAIT**, Dr. H. Goldfinch, Oil. Lent by Dr. H. Goldfinch.
56. **JULIEN, JASMINE, AND THE FOAL**, Oil. Queensland National Art Gallery.

JESSE JEWTHURST HILDER, 1881-1916, born Toowoomba; educated at the Brisbane Grammar School; worked in the Bank of New South Wales at Brisbane and at other centres in N.S.W.; studied in Sydney under Julian Ashton; owing to ill-health, retired from the bank in 1908 and spent the remaining years of his life in painting; was acclaimed a master of water-colour, and the romantic quality of his work has been much admired; represented in the principal Australian Galleries; a set of his illustrations to "My Country", by Dorothea MacKellar, is in the Mitchell Library.

57. **OLD GOVERNMENT HOUSE, WINDSOR**, Water-colour. Lent by Miss M. J. Bedford.
58. **LANDSCAPE**, Water-colour. Lent by Miss M. J. Bedford.
59. **PADDLERS, THE HARBOUR, ROSE BAY**, Water-colour. Lent by Mrs. Jeffries-Turner.

A. J. HINGSTON, 1874-1912, born London; studied at the Technical College Art School, Brisbane; member of the Queensland Art-Society; cartoonist for "Truth", and the "London Daily Mail".

60. **THE CALF**, Oil. Queensland National Art Gallery.

PERCY STANHOPE HOBDAV, 1879-1951, born Brisbane; an associate of the Central Technical College Art Classes and received private tuition; life member and Past President of the Royal Queensland Art Society, life member and Past President of the Queensland Authors' and Artists' Association; member and Past President of the Queensland Wattle League; received the R.Q.A.S. Jubilee Medal and the Coronation Medal in 1937 for services rendered to Art in this State.

61. **SEASIDE SYMPHONY**, Water-colour. Lent by Mrs. P. S. Hobday.

QUENTIN HOLE, born Charleville, 1923; studied C.R.T.S. Course, Central Technical College Art School, Brisbane; member of the Royal Queensland Art Society.

62. **THE WET ROOFS**, Oil. Lent by the Artist.

63. **LEICHHARDT STREET**, Pen and Wash. Lent by the Artist.

LAURENCE HOPE, born Sydney, 1927; studied at the East Sydney Technical College under Frank Medworth; has resided in Brisbane for the last seven years; member of the Contemporary Art Society of N.S.W.

64. **NORTH QUEENSLAND**, Water-colour. Lent by B. G. Reid, Esq.

65. **SLEEPERS**, Water-colour. Lent by B. G. Reid, Esq.

HUBERT JARVIS, born Devonshire, 1882; studied at Art Schools in London and Devonshire; member of the Royal Queensland Art Society, and the Royal Art Society of N.S.W.; exhibitor with the Australian Water-colour Institute.

66. **HILL COUNTRY**, Glen Aplin, Queensland, Water-colour. Lent by the Artist.

ISAAC WALTER JENNER, 1836-1902, born Godalming, Surrey; retired from Royal Navy in 1865 after ten years' service, and practised as a marine painter at Brighton, Sussex; settled in Brisbane in 1883; in 1886 discussed with Oscar Fris-trom and L. W. K. Wirth the formation of an Art Society in Queensland, which led to the foundation of the Queensland Art Society in 1887; took a leading part in the foundation of the Queensland National Art Gallery; often regarded as the "father" of Queensland Art; exhibited at the Royal Academy; represented in the Queensland National Art Gallery and the Darnell Collection, University of Queensland.

67. **SEASCAPE**, Oil. Lent by the University of Queensland, Darnell Collection.

68. **THE FISHING LUGGER**, Oil. Lent by Mrs. H. Jenner.

69. **SEASCAPE**, Oil. Lent by Mrs. Stanley Roe.

FRANCES VIDA LAHEY, born Pimpama, Queensland; studied at the National Gallery Schools, Melbourne, and in Paris; exhibited at the Paris Salon, New English Art Club; Empire Exhibition, 1935, the Paris International, 1937, and included in two Travelling Exhibitions of Australian Art in the U.S.A.; received the Society of Artists' Medal; received the R.Q.A.S. Jubilee Medal, and Coronation Medal, 1937; member of the Society of Artists; foundation member of the Contemporary Group, Sydney, the Australian Water-colour Institute, and the Australian Academy of Art; life member of the Royal Queensland Art Society.

70. **CANUNGRA CREEK**, Oil. Lent by the Queensland Club.

71. **PINK LILLIES**, Water-colour. Lent by Mrs. Noel Maitland.

72. **WILD CLEMATIS**, Water-colour. Lent by the Artist.

C. H. LANCASTER, born Melbourne; studied at The National Gallery School, Melbourne; Councillor and Past President of the Royal Queensland Art Society, and member of the Royal Art Society of N.S.W.; exhibited at the Empire Exhibition, 1935; received the R.Q.A.S. Jubilee Medal and the Coronation Medal, 1937; trustee of Queensland National Art Gallery; represented in the Queensland National Art Gallery.

73. **JACARANDA**, Oil. Lent by Dr. Bruce Barrack.

74. **PULLEN VALE LANDSCAPE**, Oil. Lent by the Artist.

DERWENT LEES, 1885-1931, born Brisbane; educated Melbourne; studied art in Paris; returned to Melbourne to finish University studies; studied at the Slade School, London, under Professor Brown and became Assistant Drawing Master with Professor Tonks; associated with Innes and McEvoy; travelled in Europe with Innes and Augustus John; frequently painted in Wales and Dorset; best known works are small romanticised landscapes with which he is represented in the Modern English Section in the principal world galleries.

75. **PORTRAIT OF LYNDRA IN A LANDSCAPE** (Felton Bequest, 1948), Oil. By Courtesy of the Trustees of the National Gallery of Victoria.

76. **GIRL IN A BLACK HAT**, Oil. By Courtesy of the Trustees of the National Gallery of Victoria.

VERA MERTON LEICHNEY, born Wallhalla, Victoria; studied at the Melbourne Working Men's College, and under Leslie Wilkie; member of the Royal Queensland Art Society, the Victorian Art Society, and the Brisbane Group of Artists; died at Brisbane, 1951.

77. **BOWL OF NARCISSUS**, Oil. Queensland National Art Gallery.

FRANCIS LYMBURNER, born Brisbane 1916; studied at the Central Technical College, Brisbane, under F. Martyn Roberts; moved to Sydney in 1939; represented in the National Galleries of Victoria, N.S.W., South Australia and Queensland.

78. **THE NEW HAT**, Oil. Lent by the University of Queensland, Darnell Collection.

H. K. McNEIL, born at Hobart; studied at the Hobart Technical College, and later in Sydney; member of the Royal Queensland Art Society.

79. **SILO AT KENMORE**, Water-colour. Lent by the University of Queensland.
 80. **THE WHITE BRIDGE**, Water-colour. Lent by the Artist.

MARGARET McNEIL, born Auckland, New Zealand; studied at the Hobart Technical College, and in Sydney; member of the Royal Queensland Art Society and Contemporary Society.

81. **GIRL IN SUN-HAT**, Oil. Lent by the Artist.
 82. **RUINS**, Port Arthur, Tasmania, Water-colour. Lent by the Artist.

KENNETH MacQUEEN, born Ballarat, 1897; studied at the Slade School and the Westminster School, London; member of the Society of Artists, Sydney, the Australian Water-colour Institute, the Contemporary Group, Sydney, the Half Dozen Group of Artists, and the Royal Queensland Art Society; elected Fellow of the Royal Society of Arts, London; represented in principal Australian Galleries, in the Teachers' Colleges at Armidale and Brisbane, in the Darnell Collection, University of Queensland, and in the Metropolitan Museum of Art, New York.

83. **EVENING BY THE CREEK**, Water-colour. Lent by the Teachers' College, Brisbane.
 84. **THE CREEK**, Water-colour. Lent by Dr. J. V. Duhig.
 85. **SAND DUNES**, Water-colour. Lent by the University of Queensland, Darnell Collection.

CONRAD MARTENS, 1801-1878, born Crutched Friars, London; studied under Copley Fielding; sketched in Devonshire; visited Rio de Janeiro and Montevideo in 1832; became the artist on H.M.S. "Beagle" on its surveying voyage off the southern shores of South America; two years later left the vessel at Valparaiso and sailed to Tahiti; thence to Sydney, arriving in 1835; painted in and around Sydney and in Queensland; Assistant Parliamentary Librarian (N.S.W.), 1863-1878; represented in the Dixon Collection, the William Dixon Gallery, and the Mitchell Library, the Sydney, Melbourne and Brisbane National Art Galleries, the Commonwealth National Library, Canberra, and the Queensland Museum.

86. **LANDSCAPE**, Water-colour. Lent by the University of Queensland, Darnell Collection.
 87. **BRISBANE RIVER**, Water-colour. Queensland National Art Gallery.

MRS. MUNTZ ADAMS, born in Victoria; studied at the National Gallery School, Melbourne; at the studios of Julien and Delacroix, Paris; and at Herkomer's School, London; instructor of Painting, Central Technical College, Brisbane, 1917-1922; represented in the National Galleries of Victoria, Queensland and in Geelong Gallery; died in Melbourne, 1950.

88. **CARE**, Oil. Queensland National Art Gallery.
 89. **STUDY OF CHILD'S HEAD**, Oil. Queensland National Art Gallery.
 90. **LEISURE**, Oil. Queensland National Art Gallery.



CASSIS PORT

Water-colour by Margaret Olley

MARGARET OLLEY, born at Lismore, N.S.W.; studied at the East Sydney Technical College; member of the Contemporary Art Society, Sydney; resided in Brisbane, but is at present studying in France. Represented in the National Galleries of Victoria, S.A., N.S.W. and Queensland.

91. **COUNTRY TOWNSHIP**, Oil. Lent by Mrs. Olley.
 92. **CASSIS PORT**, Water-colour. Lent by Mrs. Olley.
 93. **THE CHATEAU, CASSIS**, Water-colour. Queensland National Art Gallery.

HARRY O'NEILL, born London, 1878; arrived Australia, 1923; studied at Heatherley's, London; drew for "Punch" and other London papers.

94. **OPENING OF THE FIRST PARLIAMENT IN VICTORIA BY GOVERNOR LATROBE, 1851**, Oil. Lent by the Artist.

ROY PARKINSON, 1901-1945, born Brisbane; studied at the Central Technical College under Martyn Roberts (Drawing); also with Hubert Jarvis and William Bustard, but mainly self-taught in Painting; member of the Royal Queensland Art Society; represented in the National Galleries of Victoria, S.A., and Queensland, and Castlemaine Gallery (Vic.); exhibited in London (Coronation Exhibition, 1937), in the U.S.A., and in New Zealand; received R.Q.A.S. Jubilee Medal and Coronation Medal in 1937; wrote articles on Art and Travel; author of "Praise Life and Practise Art". (Published posthumously.)

95. **NUMBUCCA HEADS, N.S.W.**, Water-colour. Lent by the Half Dozen Group of Artists.
Queensland National Art Gallery.
96. **LONELY HEIGHTS, VICTORIAN ALPS**, Water-colour. Lent by Mrs. Roy Parkinson.

FRANK PAYNE (Mrs. A. P. CLINTON), born Brisbane; studied at the Technical College, Brisbane, under the late Godfrey Rivers, also at Colarossiss L'Ecole des Beaux Arts; member of the Royal Queensland Art Society; represented in the Queensland National Art Gallery; resides Sydney, N.S.W.

97. **FAR-WEST CHILDREN**, Oil. Lent by Mrs. G. Croll.

ELLA LILIAN PEDERSEN, born at Leicester, England; studied at the Manchester School of Art; winner of a Manchester City Council Art Scholarship; designer for fabric printers in Lancashire; studied later with Martyn Roberts, L. J. Harvey, and Vida Lahey in Brisbane; foundation member of the Half Dozen Group of Artists; member of Society of Arts & Crafts of N.S.W., executive member of Arts Council of Australia (Queensland Division), exhibitor with the Australian Water-colour Institute; represented in the Queensland National Art Gallery, Bundaberg Art Gallery; Teachers' College Collection, and the Darnell Collection, University of Queensland.

98. **EARLY MORNING LIGHT**, Water-colour. Lent by the Artist.
99. **HOT TODDY**, Water-colour drawing. Lent by Andrew Pedersen Esq.

FRANK WALDO POTTS, born Sandgate, Queensland, 1888; studied at the Central Technical College under Godfrey Rivers; member of the Royal Queensland Art Society, and the Brisbane Group of Artists; represented in the Queensland National Art Gallery.

100. **SUNSHINE WALK, SYDNEY GARDENS**, Oil. Lent by the Artist.
101. **INTERIOR OF PACKING SHED**, Water-colour. Lent by the Artist.

PATRICIA PRENTICE, born Brisbane; studied with William Bustard, Brisbane, and at the Byam Shaw Art School, London; member of the Royal Queensland Art Society.

102. **AUBERY ROAD, LONDON**, Oil. Lent by Artist.
103. **WINTER LANDSCAPE**, Water-colour. Lent by the Artist.

BETTY QUELHURST, born Laidley, Queensland; studied Central Technical College, Brisbane, and at present studying at National Gallery School, Melbourne; won a Wattle League Scholarship, a Half Dozen Group of Artists' Travelling Scholarship, and a Sara Levi Scholarship; won the Hugh Ramsay Portrait Prize (Melbourne).

104. **BALLET MISTRESS**, Oil. Lent by the Half Dozen Group of Artists.
105. **SATURDAY AFTERNOON, ALBERT PARK**, Oil. Lent by the Artist.

RICHARD JOHN RANDALL, 1869-1906, born South Brisbane; studied at the Technical College, Brisbane, and at Herkomer's Art School at Bushey, England; exhibited at the Royal Academy; returned to Queensland in 1899; carried on painting and teaching in Brisbane; a room in the City Hall, Brisbane, was at one time devoted entirely to the "Randall Art Gallery"; represented in National Galleries of N.S.W. and Queensland.

106. **PORTRAIT**, Pastel. Lent by the Brisbane City Council.
- 107.

LLOYD FREDERIC REES, born Brisbane, 1895; studied at the Technical College Art School, Brisbane; proceeded to London; travelled in Europe (1923-24); exhibited in London, Paris, and in America; awarded Silver Medal, Paris, 1937; awarded Godfrey Rivers Bequest Prize in 1941; won the 1950 Wynne Prize for Landscape; Lecturer in Art, University of Sydney; member of the Society of Artists, the Contemporary Group, Sydney, and the Half Dozen Group of Artists, Brisbane; represented in principal Australian Galleries and at Dunedin, New Zealand; resides Sydney.

108. **NOR'EASTER WEATHER, GERRINGONG**, Oil. Lent by Mr. and Mrs. R. Gilling of Wahroonga, N.S.W.
109. **THE SOUTH COAST ROAD, N.S.W.**, Oil. Lent by the Artist.
110. **INTERIOR**, Oil. Lent by Dr. and Mrs. H. S. McLelland.

ROBERTA RIDGWAY, born Brisbane; studied at the Atelier Art School, Sydney, and later with Vida Lahey; member of the Royal Queensland Art Society.

111. **OLD BRISBANE, SPRING HILL**, Amy Street, Water-colour. Lent by the Artist.

F. MARTYN ROBERTS, born Plymouth, England 1871, came to Queensland in 1883; early art studies were at the South Kensington Art School, Plymouth; in 1893 studied with Julian Ashton; won the Prize for the year at the Exhibition of the Queensland Art Society in 1900; President of the Queensland Art Society 1902, 1903; Art Master at the Brisbane Technical College for some thirty years, where he trained such men as Lloyd Rees, Douglas Annand, Ian Gall, Travis McKie, Leonard Shillam and Frances Lymburner.

112. **LANDSCAPE**, Water-colour. Lent by Henry Roberts Esq.
113. **LANDSCAPE**, Water-colour. Lent by Henry Roberts Esq.
114. **LANDSCAPE**, Water-colour. Lent by Henry Roberts Esq.

- T. BRYSON ROBERTSON, born Scotland, died Brisbane 1947.
115. **WATER STREET, VALLEY, 1916, Oil.** Lent by P. G. Reid Esq.
116. **SPRING HILL, 1919, Oil.** Lent by D. Lloyd Esq.

- W. B. ROBERTSON, born Scotland; died Brisbane about 1920.
117. **BARTLEY STREET, SPRING HILL, 1925, Oil.** Lent by P. G. Reid Esq.

- JOY ROGGENKAMP, born at Roma, Queensland; studied under the late P. Stanhope Hobday; member of the Royal Queensland Art Society.
118. **SUBURBAN SHOPPING CENTRE, Oil.**
Lent by the University of Queensland, Darnell Collection.

- PETER HAY RONALD, born Paisley, Scotland, 1885; studied at the Paisley and Glasgow Technical Colleges, and with Mrs. Muntz Adams in Brisbane; member of the Royal Queensland Art Society.
119. **WINTER SUNLIGHT, near Buderim, Oil.** Lent by the Artist.

- JOHN SALVANA, born Stewart Town, N.S.W., 1873; studied at the Royal Art Society's School, where he won several prizes; went to London in 1911; studied at Frank Calderon's School; toured on the Continent and in South Africa; Associate of the Royal Art Society of N.S.W., and honorary secretary of the Queensland Art Society, 1916-18; represented in the National Galleries of N.S.W. and Queensland; resides in Sydney.
120. **SUNNY MORNING NEAR CAMDEN, N.S.W., Oil.**
Queensland National Art Gallery.

- JEANETTIE SHELDON, born Williamstown, Victoria; studied at the Brisbane Technical College and with the late Robert Hard, Marine Painter; Life Member of the Royal Queensland Art Society and member of the Victorian Artists' Society; conducted the Gainsborough Gallery, Brisbane, from 1922 till 1939.
121. **SEASCAPE, Moreton Bay, Oil.** Lent by the Artist.

- FRANK SHERRIN, born at Brisbane; landscape painter, practically self taught; President of the Half Dozen Group of Artists; represented in the Queensland National Art Gallery, the Darnell Collection, University of Queensland, the Teachers' College, Brisbane and in the Treweeke Collection at the Wooloowin State School.
122. **COLLEGE OF PHYSICIANS, SYDNEY, Oil.** Lent by Dr. J. V. Duhig.
123. **FRENCHMEN'S BEACH, Oil.** Lent by Dr. Egmont Schmidt, Bundaberg.

- WILLIAM SMITH, born Brisbane, 1917; studied with Martyn Roberts (Central Technical College, Brisbane); Queensland Art Fund Art Library; member of the Contemporary Art Society, N.S.W.; executed large Mural for American Red Cross (1942).
124. **DARK RIVER, Oil.** Lent by Leonard and Kathleen Shillam.
125. **DRIFTWOOD, Oil.** Lent by Mrs. Marie Fawcett, Melbourne.

- HENRI TEBBITT, 1852-1926, born Paris of English parents; self taught, he travelled widely in Europe; exhibited at the Royal Academy and with the Royal Society of British Artists, also with the Royal Institute of Painters in Water-colour; came to Brisbane about 1888; as a landscape painter he worked in many parts of Australia, his pictures being very popular at the time; represented in the Queensland National Art Gallery also at Hobart, Bendigo, Geelong, Launceston, and Christchurch Galleries; the manuscript of his autobiography is in the Mitchell Library, Sydney.
126. **EVENING TWILIGHT, Water-colour.** Queensland National Art Gallery.

- PETER TEMPLETON, born at Glasgow; studied in Brisbane under Godfrey Rivers and Martyn Roberts; life member of the Royal Queensland Art Society; spent twelve years in Sydney doing Commercial Art.
127. **WINTER MORNING, ANN STREET, BRISBANE, Water-colour.**
Lent by Dr. Ronald S. Bennett.

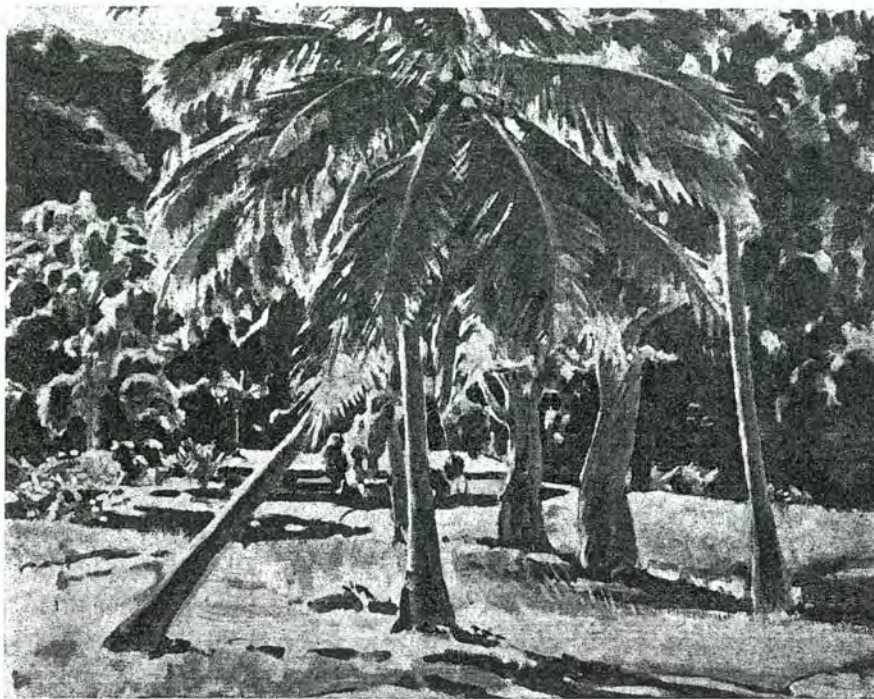
- WINIFRED MARY TOWERS, born Portsmouth; studied at the Portsmouth School of Art; won a three years' scholarship to the Royal College of Art, London; honorary member of the Portsmouth and Southsea Art Club; member of the Half Dozen Group of Artists.
128. **THE JADE EAR-RING, Oil.** Lent by the Artist.
129. **STILL LIFE, WITH CHINESE BOWL.** Lent by the Artist.

- RALPH WEPPNER, born Colbin Abbin, Victoria, 1903; studied at the Toowoomba Technical College, and with Melville Haysom; member of the Royal Queensland Art Society, and President of the Toowoomba Art Society.
130. **PRINCE HENRY DRIVE, TOOWOOMBA, Oil.** Lent by the Artist.

- JAMES WIENEKE, born in Queensland; studied at the Central Technical College; member of the Half Dozen Group of Artists and the Brisbane Art Group.
131. **APPROACHING STORM, Water-colour.** Lent by the Artist.

- L. W. K. WIRTH, in 1886 discussed with Messrs. Isaac Walter Jenner and Oscar Fristrom the formation of an Art Society in Queensland; member of the first executive committee of the Queensland Art Society formed in 1887; died in Brisbane, 1950.
132. **PORTRAIT (J. L. Watts Esq.), Oil.** Lent by Miss C. E. Watts.

- LINDA S. WOHLSEN, born Brisbane; studied under Mrs. Muntz Adams and Vida Lahey; member of the Royal Queensland Art Society.
133. **ORIENTAL, Oil.** Lent by the Artist.



TROPICAL LANDSCAPE

Oil painting by Noel Wood

NÖEL WOOD, born South Australia, 1912; studied in Adelaide, Melbourne, Sydney, London, and Paris; member of the Cairns Art Society; represented in the Principal Australian Art Galleries; resides on Dunk Island, North Queensland.

134. **TROPICAL LANDSCAPE**, Oil. Lent by Dr. J. V. Duhig.
135. **NORTH QUEENSLAND**, Oil. Lent by Dr. J. V. Duhig.
- 136 **TULLY LANDSCAPE**, Oil. Lent by Mrs. Frank Sherrin.

SCULPTURE

LEWIS J. HARVEY, 1871-1949, born Southampton; arrived Brisbane at the age of three; studied at the Technical College, Brisbane, and later became Instructor of Modelling, Wood-carving, and Pottery at the Central Technical College. Life Member and Trustee of the Royal Queensland Art Society; member of the Half Dozen Group of Artists, and life member of the Arts and Crafts Society, Brisbane; established his own Art School in Brisbane after retiring from the Technical College.

137. **DAPHNE**, Bronze. Lent by Mrs. L. J. Harvey.
138. **HEAD**, Bronze. Queensland National Art Gallery.

MARIA KUHN, born Melbourne, 1920; won a Victorian Government Scholarship to Melbourne Technical College; carried out trade work in private workshops; member of the Royal Queensland Art Society.

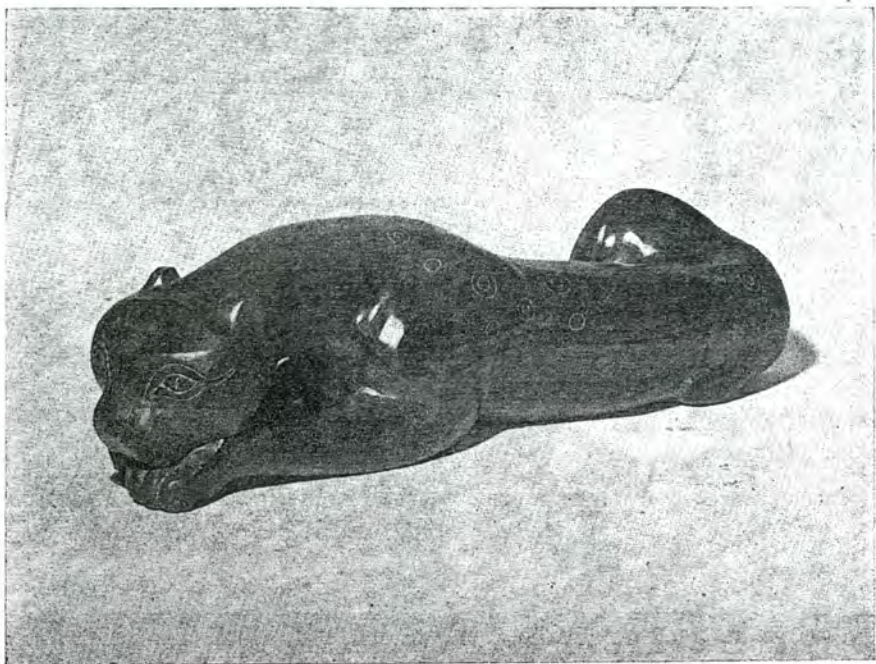
139. **MATES**, Plaster for Bronze. Lent by the Artist.
140. **PROFESSOR CHARLES SCHINDLER**, Plaster for Bronze. Lent by the Artist.

DAPHNE MAYO, born in Queensland; studied first at the Brisbane Technical College; in 1914 won the first Queensland Wattle Day League Travelling Scholarship; entered the Royal Academy School of Sculpture in London in 1920; awarded the Landseer Scholarship, two silver medals, and a bronze medal; in 1923 won the gold medal and Travelling Scholarship to Rome, being the first woman to gain this award; her principal work in Brisbane is the pedimental group of carved stone on the City Hall, facing King George Square; this work is some fifty-four feet long; has done much work on public buildings in Sydney, Brisbane, Adelaide, and Hobart; awarded the Society of Artists' Medal, the Coronation Medal and the R.Q.A.S. Jubilee Medal, 1937; represented in the Jubilee Exhibition of Australian Art, 1951; member of the Society of Artists, Sydney, and Life Member of the Royal Queensland Art Society; represented in principal Australian Galleries; resides Sydney.

141. **PORTRAIT HEAD**, Plaster. Lent by the Artist.
142. **OLYMPIAN**, Plaster. Lent by the Artist.
143. **THE FAT MAN**, Plaster. Lent by the Artist.

KATHLEEN SHILLAM, born England, 1916; studied at Central Technical College, Brisbane.

144. **ABSTRACT FIGURE**, Carved in Queensland Maple. Lent by the Artist.
145. **TOAD**, Carved in Sandstone. Lent by the University of Queensland.
146. **TORTOISE**, Salt Glazed Earthenware. Lent by Dr. Gertrude Langer.



CHEETAH

By L. Shillam

LEONARD SHILLAM, born Brisbane, 1915; studied at the Central Technical College, Brisbane and at L.C.C. Art Schools in London, through a travelling grant awarded by the Carnegie Corporation of New York; represented in the Queensland National Art Gallery.

147. **BIRD BATH**, Stone. Lent by the Artist.
148. **CHEETAH**, Carving in Queensland Walnut.
Lent by D. Archer Esq., of Brisbane.
149. **HORSE**, Carving in Queensland Maple. Lent by Mrs. E. Hooper.

HAROLD PARKER, born Aylesbury, England, 1873; arrived in Australia at the age of three; studied at the Brisbane Technical College under Clarke and Godfrey Rivers; later at the South London Art School under W. S. Frith; made his first success with a life-size figure in marble of "Ariadne," exhibited at the Royal Academy in 1908, and purchased for the Tate Gallery under the terms of the Chantrey Bequest; exhibited at the Old Salon, Paris; in 1906 was elected a member of the Royal Society of British Sculptors, but resigned in 1926; returned to Australia in 1930; life member of the Royal Queensland Art Society; represented in the National Galleries of Victoria and Queensland.

150. **THE FIRST BREATH OF SPRING**, Marble.
Queensland National Art Gallery.
151. **ESTHER**, Marble. Queensland National Art Gallery.
152. **PORTRAIT**, Bronze Relief. Lent by the Artist.

JAMES LAURENCE WATTS, 1849-1925; born at Weston-super-Mare, England; studied South Kensington School; arrived in Brisbane 1884; foundation member of the Queensland Art Society, 1887, later elected Vice-President; Instructor in Modelling at the North Brisbane and South Brisbane Technical Colleges; principal work in Brisbane is the bronze equestrian statue erected as the South African War Memorial, which now stands in Anzac Square.

153. **PORTRAIT** (John Leahy, M.L.A., Speaker in the Legislative Assembly, Queensland Parliament, 1907-1909), Plaster Bronzed.
Lent by J. A. Watts Esq.

MARGUERITE WELLER, born Winnipeg, Canada; arrived Australia 1928; studied at the East Sydney Technical College under Rayner Hoff; member of the Royal Queensland Art Society.

154. **HEAD**, Carved in Jacaranda. Lent by the Artist.
155. **FISH**, Carved in Beech. Lent by the Artist.



OLYMPIAN

By Daphne Mayo

DRAWINGS, ETCHINGS, Etc.

DOUGLAS SHENTON ANNAND (see page 7).

156. **FARM KITCHEN, WILBERFORCE, N.S.W.**, Pencil sketch.
Lent by Col. F. W. G. Annand.

CECIL GEORGE BENNETT, born Cairns, North Queensland, 1916; studied at the Central Technical College Art School, Brisbane, and at the University of Queensland (Anatomy); member of the Half Dozen Group of Artists.

157. **TEEN-AGE BLUES**, Charcoal.
Lent by the Teachers' College, Brisbane.

VINCENT BROWN (see page 8).

158. **MULBERRY TREE GROWING**, Lithograph.
Lent by the Teachers' College, Brisbane.

NUTTER BUZACOTT (see page 9).

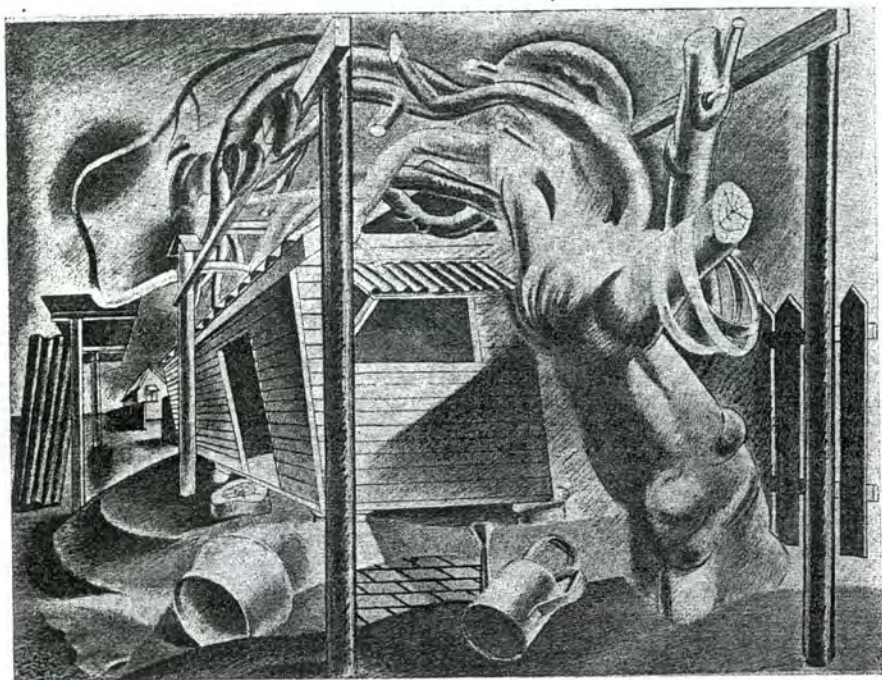
159. **WEST MELBOURNE STREET SCENE**, Wood Engraving.
Lent by Mrs. Andrew Pedersen.

THOMAS PERCY EAGLES (see page 11).

160. **H. DANIELS**, Sanguine Crayon Drawing. Lent by the Artist.

ELLA FRY (nee ROBINSON) (see page 13).

161. **GOSSIPS**, Lino-cut. Lent by Mrs. H. L. Stronach of Perth, W.A.



MULBERRY TREE GROWING

Lithograph by Vincent Brown

162. **REGATTA**, Monotype. *PERCY STANHOPE HOBDAY* (see page 16).
 Note: This monotype was exhibited in the Australian Collection of Art, Coronation Exhibition, held in London in 1937. Lent by Mrs. P. S. Hobday.
163. **OLD WOMAN**, Silver Point. *MARIA KUHN* (see page 25).
Lent by the Artist.
164. **FOWL**, Line Drawing. *FRANCIS LYMBURNER* (see page 17).
Lent by Robert Haines Esq.
165. **CLEANING THE BOATS**, Line and Wash. *FRANCIS LYMBURNER* (see page 17).
Lent by Robert Haines Esq.

LLOYD REES (see page 21).

166. Pencil Drawing. Queensland National Art Gallery.

VINCENT SHELDON, 1895-1945, born Brisbane; studied drawing at the Central Technical College, Brisbane, and etching under W. P. Robins, R.E., at South Kensington, London; member of the Australian Painter-Etchers' Society, Sydney, the Royal Queensland Art Society, and the Half Dozen Group of Artists, Brisbane; represented in Print Rooms at the British Museum and in the Victoria and Albert Museum, London.

167. **CRANES AND SCAFFOLDING**, Brisbane City Hall, 1927, Etching (zinc plate).
Lent by the Misses J. and R. Sheldon.
- 168.—**BUTTERFLIES**, Drypoint (copper plate).
Lent by the Misses J. and R. Sheldon.
169. **BRISBANE RIVER**, Etching. Queensland National Art Gallery.

JAMES WIENEKE (see page 23).

170. **CARAVANS**, Pencil Drawing. *JAMES WIENEKE* (see page 23).
Lent by the Teachers' College, Brisbane.

Catalogue compiled by C. M. B. VAN HOMRIGH).

+

