

1964/1

1964/1

POTTERY

1964/1
Organized by the National Gallery of Victoria

for circulation in the Australian State Galleries 1963-64.

AUSTRALIAN & NEW ZEALAND

POTTERY

Since the last war and, especially, during the last few years, there has been a considerable awakening of interest in the various crafts. Among the crafts enjoying this new popularity perhaps the foremost is pottery—in Australia we find that most of the Technical Schools have pottery classes and workshops with waiting lists and each year more exhibitions by established and professional potters are to be seen. Pottery is being bought and is receiving the attention of the critic and the art historian. This healthy position is mirrored in New Zealand. Whilst it is, perhaps, true that we, in Australia, see little of the painting of that country, the work of the New Zealand potter is commanding increasing attention and, as a group, their pottery now has an authority and sophistication not seen at any time since the beginning of studio pottery in New Zealand during the nineteen-twenties.

In neither country was there a tradition on which potters could build. Isolation and provincialism have had to be gradually overcome. The creative potters of both countries have taken their inspiration from many sources: from the work of the great Chinese Sung and T'ang artists, from English mediaeval pottery, from European peasant ware and, more recently, from Japanese ceramics. Potters are also beginning to discover the exhibiting possibilities of ceramic sculpture and new forms.

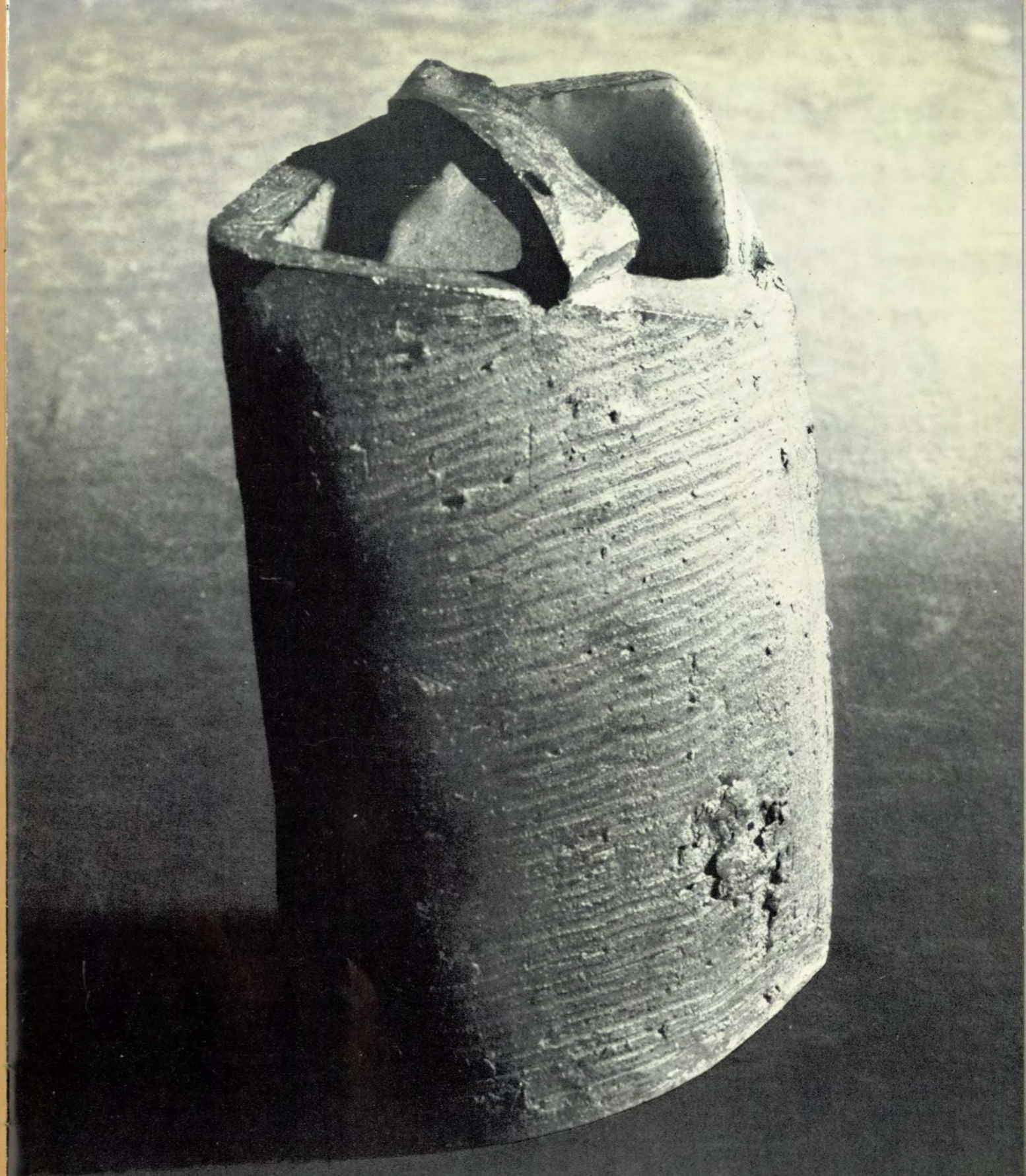
The present exhibition is important because it is the first time that a considerable body of work by New Zealand potters has been seen here and, combined with pottery by Australian craftsmen, it provides an admirable opportunity both to assess the work of our own potters and to compare the work being done in each country.

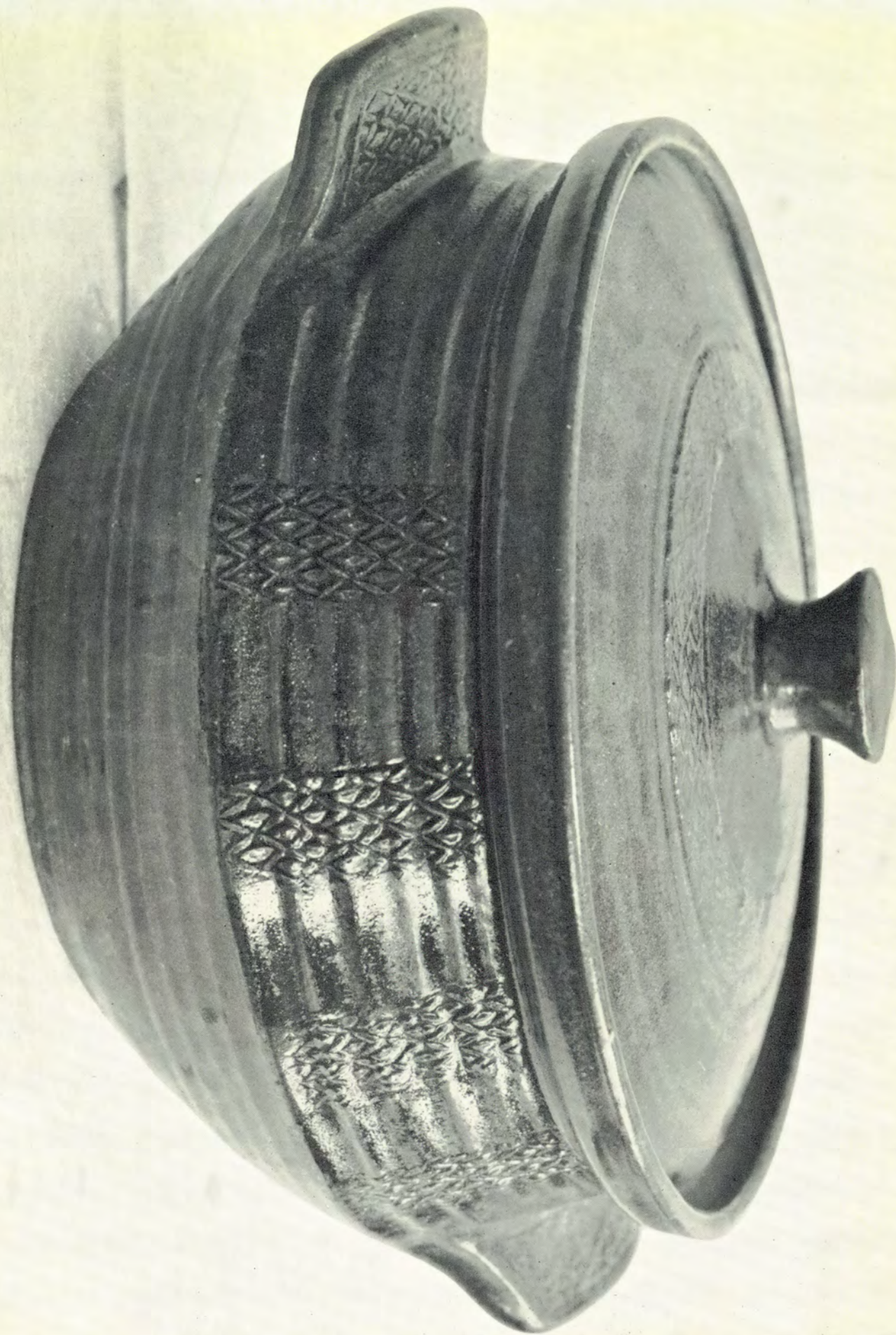
KENNETH HOOD,
NATIONAL GALLERY OF VICTORIA

NEW ZEALAND POTTERS

- | | | | | | |
|----------------------------------|----|---|----|-----------------------------------|--|
| GOURD POT Stoneware | 1 | MARTIN BECK. Born 1910. Studied pottery at the | | | |
| SCULPTURED BOTTLE Stoneware | 2 | Avondale College, Auckland, now employed at an | | | |
| BOWL Stoneware | 3 | advertising agency, makes stoneware, represented in | | | |
| | | the Canterbury Museum and other collections. | | | |
| BOWL Stoneware | 4 | NANCY BECK. Born 1911. Studied at | | | |
| BOTTLE Stoneware | 5 | Avondale College, Auckland, now makes stoneware | | | |
| BOTTLE Stoneware | 6 | at Takapuna. | | | |
| TWENTIETH CENTURY JUGGLERS No. 4 | 7 | JUNE BLACK. Born 1910. Trained at the | | | |
| MAN WITH BIRD | 8 | Elam Art School, Petone Technical College and | | | |
| TWO FIGURES | 9 | Wellington Polytechnic, works in a variety of media, | | | |
| SET OF WALKING POTS | 10 | represented in Napier Art Gallery, New Zealand | | | |
| | | House, London, and private collections. | | | |
| LAMP BASE Stoneware | 11 | DOREEN BLUMHARDT. Born 1914. A self-taught | | | |
| BOWL Stoneware | 12 | artist, now Head of the Art Department of Wellington | | | |
| FACETTED VASE Stoneware | 13 | Teachers' Training College, works in stoneware, | | | |
| BOTTLE Stoneware | 14 | represented in the Canterbury Museum, Napier Art | | | |
| VASE Stoneware | 15 | Gallery, Arts Council National Collection and | | | |
| TEAPOT Stoneware | 16 | New Zealand House, London; member of the | | | |
| | | Editorial Committee of the "New Zealand Potter", | | | |
| | | recently spent some time in Japan. | | | |
| GOURD POT Stoneware | 17 | BARRY BRICKELL. Born 1935. Now works at | | | |
| TRIANGULAR BOTTLE Stoneware | 18 | Coromandel making stoneware. | | | |
| JUG Stoneware | 19 | | | | |
| VASE Stoneware | 20 | LEN CASTLE. Born 1924. Mainly self-taught, | | | |
| BOWL Stoneware | 21 | spent 1956-57 working overseas including fourteen | | | |
| VASE Stoneware | 22 | months spent at the Leach Pottery, until recently was a | | | |
| TABLET Stoneware | 23 | lecturer at Auckland Teachers' College, now makes | | | |
| SMALL BOWL Stoneware | 24 | stoneware at Titirangi; represented in Auckland, | | | |
| BOTTLE Stoneware | 25 | Napier and Otago Museums and important private | | | |
| VASE Stoneware | 26 | collections in United States of America and England. | | | |
| PLATE Stoneware | 27 | | | | |
| DISH Stoneware | 28 | | | | |
| | | BETTY COLSON. Born 1909. Studied with | 29 | OBLONG DISH Earthenware | |
| | | Patricia Perrin, attended various summer schools, lives in | | | |
| | | Auckland and makes earthenware. | | | |
| | | ROY COWAN. Born 1918. A self-taught and professional | 30 | LAMP BASE Stoneware | |
| | | potter in Wellington, works in all ceramic media, a member of the | 31 | BISCUIT BARREL Stoneware | |
| | | Editorial Committee of the "New Zealand Potter". | 32 | CASSEROLE Stoneware | |
| | | | 33 | SANDWICH DISH Stoneware | |
| | | | 34 | TEAPOT Stoneware | |
| | | | 35 | CERAMIC PANEL, "FISH" | |
| | | HELEN DAWSON. Born 1925. Studied at Dunedin | 36 | CHEESE DISH Porcelain | |
| | | School of Art and summer schools in Auckland, lives in | 37 | LIDDED JAR Stoneware | |
| | | Claremont, Dunedin, makes stoneware, represented | 38 | BOWL Porcelain | |
| | | in the Otago Museum. | | | |
| | | DENIS HANNA. Born 1920. A physician in Auckland, | 39 | VASE Stoneware | |
| | | attended Adult Education classes, Avondale College classes and | 40 | TEAPOT, SUGAR BOWL, JUG Stoneware | |
| | | also studied with Barry Brickell and Len Castle, now | 41 | BOWL Stoneware | |
| | | makes stoneware. | | | |
| | | MARY HARDWICK-SMITH. Born 1923. No formal | 42 | JUG AND SIX MUGS Stoneware | |
| | | training, attended summer and week-end schools organised | 43 | HONEY POT Stoneware | |
| | | by the Department of Adult Education, began making | 44 | FLAT BOWL Stoneware | |
| | | earthenware nine years ago, now produces stoneware | | | |
| | | in own studio in Auckland. | | | |
| | | WAILYN HING. Trained at summer schools, employed | 45 | SLAB BOWL Stoneware | |
| | | as a typist, now produces stoneware in her own studio. | 46 | SQUARE SLAB BOTTLE Stoneware | |
| | | | 47 | SLAB AND COIL POT Stoneware | |
| | | JACK LAIRD. Born 1920. Studied at Chelsea, London | 48 | FLAT DISH Stoneware | |
| | | and Central Schools of Art, London University Institute | 49 | GOURD POT Stoneware | |
| | | of Education and Eynsham Pottery, Oxfordshire, at present | | | |
| | | works at the Art and Design Centre, Palmerston North, and is | | | |
| | | senior tutor at Victoria University. | | | |

LIDDED JAR Stoneware	50	HELEN MASON. Born 1915. Trained at summer schools and with other potters, works in stoneware at Khandallah, Wellington, represented in Napier, Canterbury and Otago Museums and New Zealand House, London; Editor of the "New Zealand Potter".
BOWL Stoneware	51	
SLAB POT Stoneware	52	
SLAB POT Stoneware	53	
SQUARE PLATE Stoneware	54	
SQUARE IRONSAND ASHPOT Stoneware	55	
BOULDER POT Stoneware	56	
SET OF THREE IRONSAND PLATES Stoneware	57	
LARGE BOWL AND SIX SMALL BOWLS Stoneware	58	MARGARET MILNE. Born 1917. Studied with Patricia Perrin at Otahuhu College and week-end schools, interested in using the local materials and rocks, produces stoneware in her own studio.
COFFEE JUG AND SIX MUGS Stoneware	59	
PLATE Stoneware	60	
COVERED DISH Stoneware	61	
OIL AND VINEGAR BOTTLES Stoneware	62	
SEATED GLAZED FIGURE	63	MURIEL MOODY. Born 1912. Trained with Linley Richardson, at Canterbury School of Art and also studied sculpture overseas, represented in private collections in New Zealand and abroad.
GREY SEATED FIGURE	64	
PINK THREE-QUARTER FIGURE	65	
BOWL Stoneware	66	GUY MOUNTAIN. Born 1906. Trained at Elam School of Art and worked for about four years with Margaret Milne, now a farmer at Katikati, produces stoneware in electric kilns, also known as a painter.
BOTTLE Stoneware	67	JIM PALMER. Born 1932. Self-taught artist, has been making pottery for three years, a commercial artist by profession and makes stoneware in a kiln of his own design.
POT Stoneware	68	
TALL-NECKED POT Stoneware	69	PATRICIA PERRIN. Born 1921. Teaches pottery at Avondale College where she was a student, Otahuhu and Pakuranga Colleges, works at Ellerslie, Auckland, has exhibited in England and United States of America.
SMALL SQUARED POT Stoneware	70	
PAIR OF SCULPTURED BOWLS Stoneware	71	
PEPPER AND SALT SET Stoneware	72	
ROUND BOTTLE-NECKED POT Stoneware	73	
COFFEE POT, CREAM JUG, SUGAR BOWL Stoneware	74	JULIET PETER. Born 1916. Studied in London and New Zealand, now a part-time potter in Wellington producing stoneware and earthenware, a member of the Editorial Committee of "New Zealand Potter".
DECORATED DISH Earthenware	75	
DECORATED SAVOURY DISH Earthenware	76	
SMALL VASE Stoneware	77	
SMALL BOWL Stoneware	78	
LARGE VASE Stoneware	79	





- BETTY RAPSON. 80 POT Earthenware
- INEZ RENNIE. Born 1903. Studied at Technical College and Wellington Teachers' Training College, now makes earthenware. 81 NUT DISHES ON AN OAK TRAY Earthenware
82 MINT SAUCE AND MAYONNAISE SET Earthenware
- RACHEL ROSE. Born 1904. Began pottery working with Brier Gardner, later studied with Doreen Blumhardt, now makes earthenware in her Wellington workshop. 83 SET OF SIX SMALL BOWLS Earthenware
- PETER STICHBURY. Born 1924. Studied with Robert Field, later at the Leach Pottery and with Michael Cardew in Nigeria, represented in the Auckland Art Gallery, New Zealand House, London and private collections, lecturer in art at Ardmore Teachers' College, produces stoneware in an oil-fired kiln. 84 LARGE BOTTLE VASE Stoneware
85 TALL BOTTLE Stoneware
86 CASSEROLE Stoneware
87 TEAPOT Stoneware
88 TEAPOT Salt-glazed Stoneware
- GRAEME STORM. Born 1936. Studied at Dunedin and the Central School of Art, London, produces stoneware and earthenware, at present working in Canada, represented in collections in Auckland, Palmerston North and Wellington. 89 VASE Salt-glazed Stoneware
90 CYLINDRICAL POT Earthenware
91 UNGLAZED POT Earthenware
92 POT Salt-glazed Stoneware
93 CYLINDRICAL JAR Earthenware
- LEE THOMSON. Born 1921. Attended Adult Education Classes and summer schools, now makes stoneware, represented in private collections, the Arts Advisory Council Collection and Industries and Commerce Collection, a member of the Editorial Committee of "New Zealand Potter". 94 BOWL AND SIX PLATTERS Stoneware
95 TEAPOT Stoneware
96 VASE Stoneware
97 FLOOR VASE Stoneware
98 PLANT HOLDER AND SAUCER Stoneware
- HILARY THURSTON. Born 1915. No formal training, worked at summer schools and with a local pottery group, interested in slipware, works at Napier. 99 SET OF THREE BOWLS Earthenware

VASE Stoneware 100
 BOTTLE Stoneware 101
 BOWL Stoneware 102
 ASH TRAY Stoneware 103
 BOTTLE Stoneware 104

CARL VENDELBOCH. Born 1922 in Holland. Has twelve years pottery experience, trained as a glass-blower and sculptor, has also worked as a sculptor's assistant, now lives at Geraldine and makes stoneware.

VASE Stoneware 105

LILYAN WALCOTT. Born 1909. Received pottery training at summer schools and evening classes at Technical Schools, by profession an advertising agent, works in stoneware and is a member of Auckland Studio Potters.

COILED BOWL Stoneware 106
 COILED SMALL BOWL Stoneware 107
 CERAMIC SCULPTURE, "ZENOLITH" Stoneware 108
 CERAMIC SCULPTURE, "ZENOLITH" Stoneware 109
 CERAMIC SCULPTURE, "BULL" Stoneware 110

JEAN WEIR.

SET OF THREE LIDDED BOWLS WITH SAUCERS Stoneware 111

JOCELYN WILKIE. Born 1908. Studied at Elam School of Art and with Patricia Perrin and Margaret Milne, now makes earthenware at Katikati, also interested in weaving and painting.

LARGE BOWL Stoneware 112
 SHALLOW PLATE Stoneware 113
 SET OF TWO OIL BOTTLES Stoneware 114
 BOTTLE Stoneware 115

WILFRED WRIGHT. Born 1931. Worked with John Chappel, now makes stoneware in Riekorangi, Waikanae.

AUSTRALIAN POTTERS

PITCHER Stoneware 116
 STORAGE JAR Stoneware 117
 PLATTER Stoneware 118

LES BLAKEBROUGH. Born 1930. Studied with Peter Rushforth and Mollie Douglas at National Art School, Sydney, worked with Ivan McMeekin at Sturt Pottery, Mittagong, which he now manages, represented in private collections, National Gallery of Victoria, Art Gallery of New South Wales and Australian National University, Canberra.

TANKARD Earthenware 119
 GOBLET Earthenware 120
 WINE DECANTER Earthenware 121
 SHALLOW BOWL Earthenware 122

DAVID BOYD. Born 1924. Studied at National Gallery School, Melbourne, and with his father Merric Boyd, then started his own pottery with his wife Hermia, travelled in Europe in the early nineteen-fifties, represented in most Australian state galleries, at present living in London.

MOLLIE DOUGLAS. Born 1920. Studied at the National Art School, Sydney, and is now a teacher of ceramics there, represented in the National Gallery of Victoria and Queensland Art Gallery, works in stoneware.

123 CELADON VASE Stoneware
 124 STORAGE JAR Stoneware
 125 BOWL Stoneware

PHYL DUNN. Born 1915. A full-time and professional potter, studied at Warrandyte with Reg Preston and also at the Central School of Art, London between 1954 and 1956, represented in private collections and the National Gallery of Victoria, lives at Warrandyte and makes earthenware.

126 CROCK Earthenware
 127 COVERED DISH Earthenware
 128 BOWL Earthenware
 129 COVERED JAR Earthenware

IVAN ENGLUND. Born 1915. Studied at National Art School, Sydney, now an art teacher at Wollongong, in recent years has visited New Zealand, Philippines, Japan, Hong Kong and Thailand, represented in most Australian state galleries and the Australian National University, Canberra, works in stoneware making individual pots, ceramic murals and sculpture.

130 BOWL Stoneware
 131 SQUARED BOTTLE Stoneware
 132 TEXTURED VASE Stoneware
 133 CUT-SIDED BOTTLE Stoneware

PATRICIA ENGLUND. Born 1922. Studied at Julian Ashton School, Sydney, now teaches pottery at Wollongong, represented in National Gallery of Victoria, Western Australian Art Gallery and Newcastle Teachers' College, visited New Zealand, Philippines, Japan, Hong Kong and Thailand recently, works in stoneware and porcelain.

134 JAR Stoneware
 135 VASE Stoneware
 136 BLOSSOM VASE Stoneware
 137 BLOSSOM VASE Stoneware

WANDA GARNSEY. Born 1917. Trained at the National Art School, Sydney, and at present an instructor there, editor of the magazine "Pottery in Australia", represented in the National Gallery of Victoria and Sydney Boys High School, has exhibited in Washington, travelled recently in Japan, South Korea, China and Thailand, lives at Turramurra and produces stoneware.

138 VASE Stoneware
 139 YING CHING VASE Stoneware
 140 IRON WASH VASE Stoneware
 141 BLACK VASE Stoneware

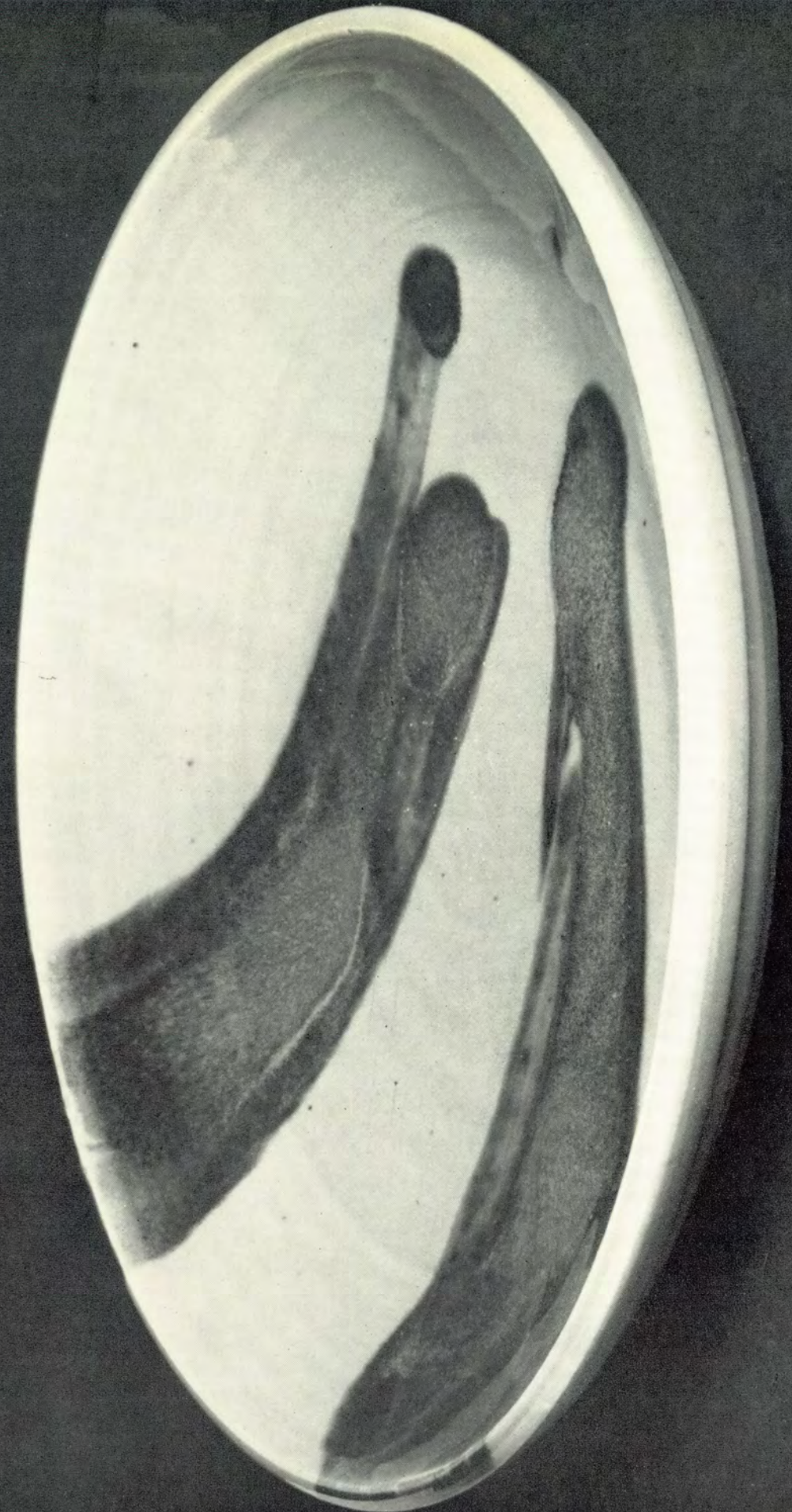
MAREA GAZZARD. Born 1928. Studied at National Art School, Sydney and Central School, London, from 1955 travelled in Italy, Yugoslavia, France, Spain and Holland and lived in London and Montreal, later travelled across America visiting potters and artists, returned to Australia in 1960, works in earthenware and her pottery is to be found in private collections here and overseas.

142 COILED BOWL Earthenware
 143 REED POT Earthenware

GUY GREY-SMITH. Born 1916. Known as a painter as well as a potter, studied in England 1945-47 and 1952-54, during this time studied pottery with Heber Mathews at Woolwich Polytechnic School, London, his earthenware is to be found in the National Gallery of Victoria, the Western Australian Art Gallery and the National Collection, Canberra, lives near Perth.

144 BOWL Earthenware
 145 PEPPER AND SALT SET Earthenware
 146 WATER JUG Earthenware
 147 POT Earthenware

- COVERED JAR Stoneware 148 H. R. HUGHAN. Born 1893. A self-taught potter and the first to make stoneware in Australia, for many years a part-time potter while carrying on the profession of engineer, now works as a full-time potter at Glen Iris in Victoria, represented in many private collections, the National Gallery of Victoria, the Queensland Art Gallery, the Art Gallery of New South Wales, the Australian National University and Museum of Applied Arts and Sciences, Sydney.
- CASSEROLE Stoneware 149
- BOWL Stoneware 150
- VASE Stoneware 151
- VASE Stoneware 152 EILEEN KEYS. Born 1903. Studied at the Canterbury School of Arts, Christchurch, New Zealand and the Chelsea School, London, works in stoneware in Perth and examples of her work are to be found in state galleries in Brisbane, Sydney, Perth and Melbourne, has made several trips to Europe.
- VASE Stoneware 153
- BOWL Stoneware 154
- VASE Stoneware 155
- "THREE DIMENSIONAL PAINTING" Stoneware 156 ALEX LECKIE. Born 1932. Studied at the Glasgow School of Art, represented in the Western Australian Art Gallery collection and has received many private and public commissions, lives near Adelaide and works in stoneware.
- WINE BOTTLE Stoneware 157
- OWL Stoneware 158
- POT Stoneware 159
- BOTTLE ("SOPHISTICATION") Stoneware 160 HENRI LE GRAND. Born 1921 in Amsterdam, studied at the Academy of Art Training and other schools in Amsterdam, now teaches ceramics at Canberra Technical College, works in both stoneware and earthenware and his pottery is to be found in state collections in Queensland, Western Australia, Tasmania, Victoria and universities in Melbourne and Canberra.
- BOWL ("DESIRE") Stoneware 161
- LIDDED BOWL ("DUEL FORCE") Stoneware 162
- BOWL ("BIRD FLIGHT") Stoneware 163
- TEXTURED WINE BOTTLE Stoneware 164 COL LEVY. Born 1933. Studied manual arts at Sydney Teachers' College, then pottery part-time at National Art School, worked with Ivan McMeekin at Mittagong, later established potteries at Woolloomooloo and Camperdown, New South Wales, now works at Bowen Mountain making stoneware, represented in National Gallery of Victoria, Art Gallery of New South Wales, Australian National University.
- WINE BOTTLE Stoneware 165
- COVERED BOWL Stoneware 166
- TEA CADDY Stoneware 167
- BOWL Earthenware 168 ALLAN LOWE. Born 1907. Studied at the Julian Ashton Art School, National Gallery School, Melbourne and Royal Melbourne Technical College, established pottery workshops in 1929, represented in National Gallery of Victoria, South Australian Art Gallery and Queensland Art Gallery, makes earthenware at Ferntree Gully, Victoria.
- LIDDED JAR Earthenware 169
- JUG Earthenware 170
- BOTTLE Earthenware 171





- CARL McCONNELL. Born 1926. Began his training at Chicago Art Institute, later studied at Central Technical College, Brisbane, has travelled in Europe, United States of America, China, Japan and South America, until recently was Head of Pottery Department of Central Technical College, now a full-time potter, his stoneware is found in private collections in Australia, United States of America, United Kingdom and Queensland Art Gallery, has executed many commissions, works at Kenmore, Brisbane.
- MILTON MOON. Born 1926. Trained at Central Technical College, Brisbane, now senior instructor in ceramics there, studied painting with Margaret Cilento, taught throwing by Mervyn Feeney, lives near Brisbane and makes both stoneware and earthenware, represented in Queensland Art Gallery and Art Gallery of New South Wales.
- JOHN PERCEVAL. Born 1923. Began training at National Gallery School, Melbourne, established pottery workshop in 1944-45 with Arthur Boyd, now carries on pottery and painting as joint activities, works in earthenware and has received many commissions, examples of his pottery are to be found in private collections and most Australian state galleries.
- REG PRESTON. Born 1917. Studied sculpture at Westminster School of Arts and Royal Academy, London, also studied pottery at Royal Melbourne Technical College, lived in London and Paris 1938-39, represented in private collections, lives at Warrandyte, makes earthenware and also known as a painter.
- RACHEL ROXBURGH. Born 1915. Studied at Hammersmith School, London, lived in England 1947-56, represented in private collections, lives at North Sydney and makes earthenware.
- PETER RUSHFORTH. Born 1921. Studied at Royal Melbourne Technical College and National Art School, Sydney, now Head of the Department of Ceramics there, lives at Beecroft, New South Wales, and his work is found in most Australian state galleries, has recently travelled in Japan, studying pottery there.
- BERNARD SAHM. Born 1926. Trained at National Art School, Sydney, and later with Harry Davis in England, also at Gutenhalde Pottery in Germany, now teaches at National Art School, has his own workshop at Mosman, Sydney and makes stoneware in coke-fired kiln, represented in private collections, National Gallery of Victoria and Art Gallery of New South Wales.
- 172 BRANCH POT Stoneware
 173 BOTTLE Stoneware
 174 VASE Stoneware
 175 VASE Stoneware
 176 VASE Stoneware
 177 BOTTLE Stoneware
 178 JUG Stoneware
 179 BOWL Stoneware
 180 GOBLET Earthenware
 181 CASSEROLE Earthenware
 182 MUG Earthenware
 183 PLATTER Earthenware
 184 CASSEROLE Earthenware
 185 COVERED POT Earthenware
 186 JUG Earthenware
 187 DECORATED CHARGER Earthenware
 188 BOWL Earthenware
 189 PLATTER Earthenware
 190 JUG Earthenware
 191 BOWL Stoneware
 192 VASE Stoneware
 193 CASSEROLE Stoneware
 194 VASE Stoneware
 195 VASE Stoneware
 196 VASE Stoneware
 197 BOWL Stoneware
 198 BOWL Stoneware

TWO-QUART JUG Earthenware 199
 TWO-QUART JUG Earthenware 200
 SHALLOW BOWL Earthenware 201
 MOULDED DISH Earthenware 202

EDWARD SHAW. Born 1914. Spent two years at a pottery school in Melbourne, studied overseas for four years at the School of Art in Camberwell, London, and at Penzance, later at Italian Government School of Ceramics in Faenza, worked with Michael Cardew and at other potteries in the United Kingdom, now lives in Hobart and teaches pottery, has carried out several commissions in Hobart.

VASE Earthenware 203
 PALETTE DISH Earthenware 204
 SHERRY DECANTER AND CUPS Earthenware 205
 VASE Earthenware 206

MARGARET SHAW. Commenced pottery at the Friends School, Hobart, between 1953 and 1954 studied with Paul Barron and Henry Hammond at the Farnham School of Art, Surrey, specialising in stoneware, after returning to Hobart, Margaret and Edward Shaw established the Shavian Pottery there.

BOTTLE Stoneware 207
 LARGE JUG Stoneware 208
 LIDDED POT Stoneware 209
 CERAMIC SCULPTURE, "BIRD FORM" Stoneware 210

DEREK SMITH. Born 1931. Studied at the Loughborough College of Art and the Leicester College of Art, England, at present is lecturer at School of Art, Hobart, represented in private collections in England and Australia and the Academy of Science, Canberra, produces both thrown pottery and sculpture in stoneware.

VASE Earthenware 211
 VASE Earthenware 212
 BOWL Earthenware 213
 BOWL Earthenware 214

CHARLES SWAIN. Born 1917. Studied pottery at the National Art School, Sydney, travelled in Europe in 1958 and Japan in 1961, at present lives in Sydney and makes earthenware, represented in private collections.

BOWL Earthenware 215
 BOWL Earthenware 216
 CYLINDER Earthenware 217

MARGARET TUCKSON. Born 1921. Studied pottery with Peter Rushforth and Mollie Douglas at the National Art School, Sydney and is now a part-time teacher there, also teaches pottery in her own studio, works in both stoneware and earthenware and her pottery is found in many private collections.

POT Earthenware 218
 LIDDED JAR Earthenware 219
 BOWL Earthenware 220

JEFFERY WILKINSON. Born 1921. Trained at the Ballarat Art School and Royal Melbourne Technical College, lives in Melbourne and makes earthenware, represented in private collections and in the Ballarat and Geelong Art Galleries.

ACKNOWLEDGMENTS

The Trustees of the National Gallery of Victoria wish to thank the Editorial Committee of the magazine "New Zealand Potter" for organising the exhibition in New Zealand and for undertaking the selection of pottery; also the public and private collectors who have very generously agreed to lend pots to the exhibition:

117 The Trustees, the Art Gallery of New South Wales
 119 Miss Edith MacMillan, the Primrose Pottery Shop, Melbourne
 120 " " " " " " " "
 121 " " " " " " " "
 122 " " " " " " " "
 180 " " " " " " " "
 181 " " " " " " " "
 182 " " " " " " " "
 183 " " " " " " " "
 194 " " " " " " " "
 116 Mr. Derek Wrigley, D.A., A.R.A.I.A., A.I.D.I.A., Canberra
 128 Mr. Reg Preston
 142 Dr. & Mrs. K. Fowler
 143 Mr. Donald Gazzard
 161 Mrs. C. Christian
 164 The Von Bertouch Galleries, Newcastle
 185 Miss Phyl Dunn
 192 Mrs. D. Campbell

Most ceramic wares can be divided, broadly, into three classes—earthenware, stoneware and porcelain. However, the divisions are not rigid and the lines of demarcation may, at times, be vague.

EARTHENWARE The term is usually applied to pottery with a body which, before glazing, is not vitrified, i.e. porous. Earthenware is fired at temperatures ranging up to 900° C. and the body remains comparatively soft.

STONEWARE Unlike earthenware the stoneware body is hard and impervious to liquids. A high temperature in the kiln is needed to fire stoneware and the normal range is between 1200° C. and 1400° C. Salt-glazed stoneware is achieved by introducing salt into the kiln at the appropriate moment during firing and the salt combining with the alumina and silica in the clay forms a thin, hard film on the surface of the pot.

PORCELAIN Porcelain, like stoneware, is vitrified. The body is white and, to some extent, translucent. European porcelain may be divided into true or hard-paste porcelain, a compound of china-clay and china-stone (fired to a temperature of 1300°–1400° C) and artificial or soft-paste porcelain (where the kiln temperature required rarely exceeds 1100° C).

GLAZE A coating, usually shiny, of glass-like substances applied to the surface of pottery which renders the low-fired wares impervious to liquids. It is also used as decoration or as an aid to cleanliness in utility wares. In low-fired pottery the glaze remains as a coating on the surface of the vessel but in high-fired wares glaze and body are perfectly united.

DECORATION Some of the decorative techniques most commonly encountered are:

SLIP A semi-liquid clay mixture trailed or painted on to a ground, usually of a darker colour. The method is of great antiquity and the slip may be manipulated with a comb or brush to produce streaked, feathered or marbled patterns.

SGRAFFIATO The term is most often applied to decoration scratched through a coating of slip to the body beneath thus giving a design or pattern in contrasted colours.

RESIST In this method a design is painted on the pot in molten wax or an impervious water-resistant substance before dipping in the glaze. The resist design is burnt away in the kiln and leaves a pattern in reserve on a coloured ground.

BRUSH Simple or extremely complex patterns and designs can be painted on the glaze or directly on to the pot with a brush and a suitable pigment.



AUSTRALIAN & NEW ZEALAND