

QAG
ExCat
1976.02
Copy 2

Australian Jewellery

An exhibition of eleven contemporary jewellers prepared by the Crafts Board of the Australia Council to tour State and regional galleries 1975-1976.

Exhibition designed by
John Dallwitz and Ronald Danvers
of the Super Environment Design
and Research Studio, Adelaide

Catalogue designed by R. W. Bond
Photography by Dalman & Smith
Film by S.A. Film Corporation

frank bauer

Born 1942 Germany,
trained in Hamburg, Hildersheim
and Kilkenny.
Arrived Australia 1972.
Lives in South Australia.

1

Neckband with water tap,
with acrylic. L. 20 cm.

2

Clamp ring, movable weights,
with acrylic. H. 5 cm. (*Illustrated*)

3

Brooch with reflectors. 5 x 5 cm.

4

Ring with movable discs. H. 4.5 cm.

QHE B&C
1976 02
Copy 2





norman creighton

Born 1943 Australia.
Trained in Melbourne,
lives in Victoria.

5

Neckband "Through Venetian Blinds"
with acrylic. L. 23 cm. *(Illustrated)*

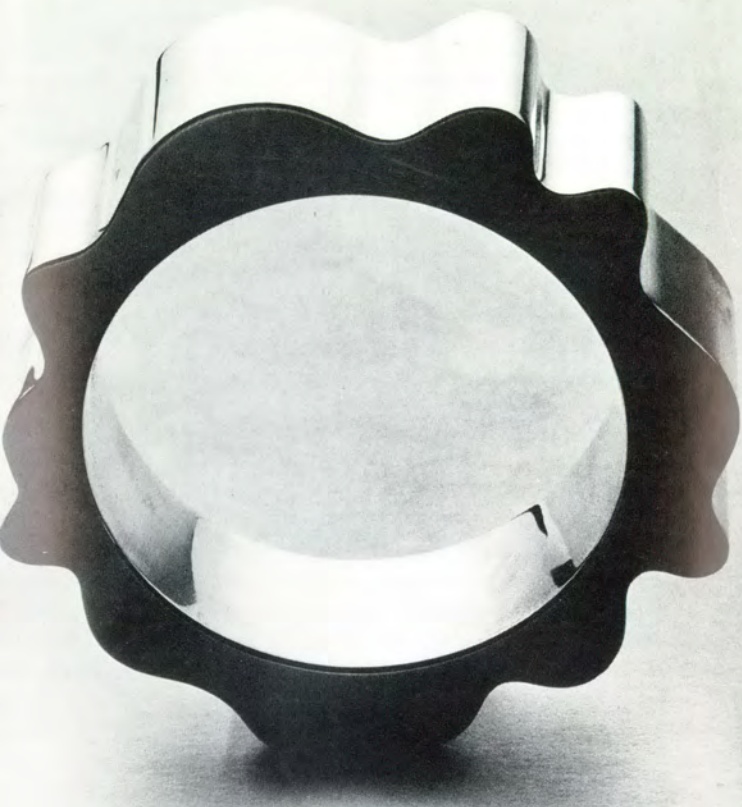
6

Neckband with rows of discs. L. 27 cm.

7

Ring with gold. H. 5 cm.





ragnar hansen

Born 1945 Norway.
Trained Frederikstad.
Arrived Australia 1972, lives
in Tasmania.

8

Neckring with object. L. 23 cm.

9

Armring with object. H. 9 cm.

10

Armring. Dia. 9 cm. (*Illustrated*)

11

Ring. H. 3.5 cm.

vagn hemmingsen

Born 1922 Denmark.
Trained Copenhagen.
Arrived Australia 1970,
lives in South Australia.

12

Neckband with chrysoprase. L. 31 cm.

13

Pendant with jade. 9 x 7 cm. (*Illustrated*)

14

Bracelet. Dia. 9 cm.





rex keogh

Born 1943 Australia.
Trained Melbourne, lives
in Victoria.

15

Pendant with perspex. 7 x 6 cm.

16

Neckring, interchangeable units, with
leather and perspex. H. 20 cm. approx. *(Illustrated)*

17

Ring, movable sections
with perspex. H. 4 cm.



helge larsen
and daran lewers

Larsen: Born 1929 Denmark.
Trained Copenhagen and U.S.A.
Arrived Australia 1961.
Lives in New South Wales.
Shares workshop with
Lewers: Born 1936 Australia.
Trained Sydney and Copenhagen.

The four pieces have been jointly produced.

18

Pendant. Linked forms with acrylic
and leather. 7.5 x 4.5 cm.

19

Pendant. Harbour bridge
with acrylic. 7 x 5.5 cm. (*Illustrated*)

20

Pendant. Linked forms. 5 x 5.5 cm.

21

Brooch, blue house with acrylic. 5 x 4 cm.



roy lewis

Born 1933 Wales.
Trained in England.
Arrived in Australia 1966.
Lives in New South Wales.

22

Neckband, with blue glass, antique beads,
buffalo horn rings. L. 16 cm.

23

Neckband with jade and amethyst. L. 22.5 cm.

24

Wrist band. Dia. 9.5 cm. (*Illustrated*)



ray norman

Born 1945 Australia.
Trained in Sydney.
Lives in New South Wales.

25

Pendant with jasper, laminated petrified wood and cowhair. 17 x 5.5 cm.

26

Pendant with carnelian and horn. 16 x 15 cm.

27

Brooch with malachite. 6.5 x 4 cm. (*Illustrated*)



albert steen

Born 1941 England.
Arrived Australia prior to 1958.
Studied in Melbourne.
Lives in South Australia.

28

Neckband with glass and flowers. L. 50 cm.

29

Armband with boulder opal. Dia. 8.5 cm. (*Illustrated*)

30

Ring with boulder opal. H. 5 cm.



Born 1922 Germany.
Trained in Hamburg.
Arrived Australia 1953.
Lives in Victoria.

31

Object No. 7, with gold, glass, acrylic. 5.6 x 5.6 cm.

32

Pendant with two faces, gold, steel
and silver. 8 x 6.5 cm.

33

Ring with two faces, gold, steel, copper
with silver. H. 3 cm. (*Illustrated*)

wolf wennrich

all jewellery is sterling silver, additional materials are stated

The collection was purchased or commissioned by the Crafts Board and is not for sale, however, the craftsmen's addresses are available from the attendant in charge at each showing.

Further biographical details are also available from the attendant.

Three short 16 mm films – Plastics, Casting and Fabricating, are available from State film libraries or the State office of the Crafts Association.