

1976 / 5

PRR

THE FRED  
AND MARY MARER  
COLLECTION



## Introduction

As I recall, Fred Marer just walked into our pot shop one Saturday afternoon sometime in 1955. We were a small group then, maybe a half dozen students and our teacher, Peter Voulkos. Although the perspective acquired with time has shown that great things were happening in clay that year, little did we realize the importance then. But somehow, Fred Marer must have sensed its importance because he soon became a regular visitor, a collector of our pots and a personal friend.

I've never really understood how he first learned about Pete's class at the Los Angeles County Art Institute. Perhaps it was an extension of his interest in pots which began at Los Angeles City College where he taught math classes. I believe it was Bernard Kestler, then teaching pottery at City College, who may have introduced Fred to an appreciation of pottery. I'm tempted to theorize that at first he learned of Scandinavian pots — then perhaps English and later Japanese. Certainly that was the most usual path taken at that time. But exactly how Fred made the move to visit our shop is still unclear to me.

What I do know is that we began to anticipate his visits and that they increased in number. The pattern was almost always the same. Because fresh hot coffee was always available, Fred's visit would begin with a cup. Then as we went back to work, he would circulate around the room examining work in progress, questioning us regarding its value or lack of it. In retrospect, Fred's visits seemed to elicit conversations about our work. We found we were asked to put into words, as a response to his questioning, what we had created intuitively.

At times, Pete would point out a particularly successful pot to Fred, and Fred in turn would often act on his information by asking to purchase it. It didn't seem to make much difference who made it, just that it be good.

Years later, after I moved from Los Angeles to teach at Scripps College, Fred continued to follow my progress. He did the same with Pete, John Mason, Michael Frimkess, Henry Takemoto, Jerry Rothman, Ken Price, and many others, visiting their studios as often as possible. Even after Pete moved to Berkeley, Fred would visit him several times a year, thereby widening his circle of friends and adding more depth to his collection with new purchases.

At one point early in our acquaintance, Fred introduced us to his wife Mary. It was in their home that I grew to appreciate the youthful quality of their life. Their home was and still is a tribute to their interest in helping young people, sometimes by simply providing a haven, a place to learn, or when needed, a sympathetic ear. Unofficially, it became a halfway house for young Japanese students. In fact, it was often their first stay when arriving in the United States and it continued to be their "family" away from home for several years.

Fred's collection of contemporary pottery is exciting because he was present at its inception. He understood the evolving shapes and ideas because he made the effort to understand the people who were making them change. A purchase was not often a snap judgment. Rather, after a lengthy consideration of a piece perhaps a questioning of the maker, Fred would ask to take it home on trial. I believe this patience of the need to live with a new idea, helps to explain why so many of Fred's pots are of high quality. The test of time as one method of judging value has been one of Fred's most useful tools in determining what to buy. Added to this, of course, was his willingness to seek advice from others and a certain willingness to gamble. But, in the end, the collection reflects Fred's eye.

Paul Soldner  
Professor of Art, Scripps College,  
Claremont, California.

## Itinerary

Newcastle City Art Gallery  
Australian Museum, Sydney  
Queensland Art Gallery, Brisbane  
Tasmanian Museum & Art Gallery, Hobart  
National Gallery of Victoria, Melbourne  
Adelaide Festival Centre  
Art Gallery of Western Australia, Perth

## Acknowledgement

This exhibition has been loaned by Fred and Mary Marer with Paul Soldner of Scripps College, California, selecting part of their Collection for the exhibition. The Marers have been collecting pottery on the West Coast of California over the past 20 years.

The exhibition is sponsored by the Crafts Board of the Australia Council.

Potters of the United States

## Autio

Rudy Autio  
Born 1926  
Studied at Montana State College,  
Bozeman; Washington State University,  
Pullman

1. Vase, 40½" x 24" stoneware, low fire  
overglaze, 1968
2. Bottle, 14½" x 9½", stoneware cone  
10, 1963



## Bartels

Milo Bartels  
Born 1950  
Studied at California State University,  
Fullerton

3. Horse, 16½" x 21", raku, 1974

## Bengston

Billy Al Bengston  
Born 1934  
Studied at Otis Art Institute

4. Platter, 11", stoneware, 1956
5. Vase, 13½" x 5½", stoneware, 1956



## Busby

Betty Busby  
Born 1952  
Studied at Rhode Island School of Design

6. Dog, 23½" x 37", Cone 10 red, 1974

## Cornelius

Philip G Cornelius  
Born 1934  
Studied at San Jose State College;  
Scripps College; worked with Peter  
Voulkos

7. Covered Jar, 18" x 14", stoneware,  
1971
8. Platter, 20", stoneware, 1974



## Fernald

Ellie Fernald  
Born 1939  
Studied at Wallingford Potters' Guild;  
Penland School of Crafts; Claremont  
Graduate School; Pottery Northwest,  
Seattle

9. Platter, 13", low fire, 1971



9

## Frimkess

Michael Frimkess  
Born 1937  
Studied at Otis Art Institute

10. Covered jar, 22" x 14", low fire, 1968  
11. Platter, 19" dia., stoneware, 1960



10

## Frimkess

Magdalena Suarez Frimkess  
Born 1929  
Studied at Venezuela; Catholic  
University, Santiago, Chile; Clay Art  
Centre, New York

The following pieces were made by both  
Magdalena and Michael Frimkess

12. Vase, 11½" x 5½", low fire, china  
painting, 1974  
13. Covered jar, 14" x 14", low fire, china  
painting, 1968

## Hare

Sharon Hare  
Born 1950  
Studied at Claremont Graduate School

14. Landscape, 18" x 24", cone 2 reduce,  
1973

## Horn

Steve Horn  
Born 1949  
Studied at California State University,  
Fullerton

15. Platter, 28" x 4", stoneware, 1975

## Humble

Doug Humble  
Born 1942  
Studied at Pottery Northwest, Seattle;  
Claremont Graduate School

16. Sculpture, 25" x 20" x 7", cone 2 salt  
reduction, 1972



15

## Klotz

Suzanne Klotz  
Born 1944  
Studied at Washington University, St. Louis; Kansas City Art Institute; University of Missouri, Kansas City; Texas Technical University

17. Figure framed in wood, 27" x 17",  
clay painted with acrylic, 1972

## Mason

John Mason  
Born 1927  
Studied at Otis Art Institute; Chouinard Art Institute

18. Mural, 14½" x 42½", stoneware,  
1958  
19. Vase, 12¼" x 6", stoneware, 1964  
20. Sculpture, 41" x 14", stoneware, 1969  
21. Vase, 24" x 8", stoneware, low fire  
overglaze, 1958



## McCuistion

John Toby McCuistion  
Born 1948  
Studied at Santa Ana College and with Jerry Rothman and Rudy Autio

22. Covered Jar, 18½" x 12½", stone-  
ware, lowfire lustre, 1973



## Magennis

Beverley Magennis  
Born 1942  
Studied at Ontario College of Arts,  
Toronto; Claremont Graduate School

23. Teapot, 24½" x 17", low temperature  
firing oxidation, 1974

## Melchert

James Melchert  
Born 1930  
Studied at Princeton University; Univer-  
sity of Chicago; University of California,  
Berkeley

24. Sculpture, 12½" x 21", stoneware,  
1960



## Moriyama

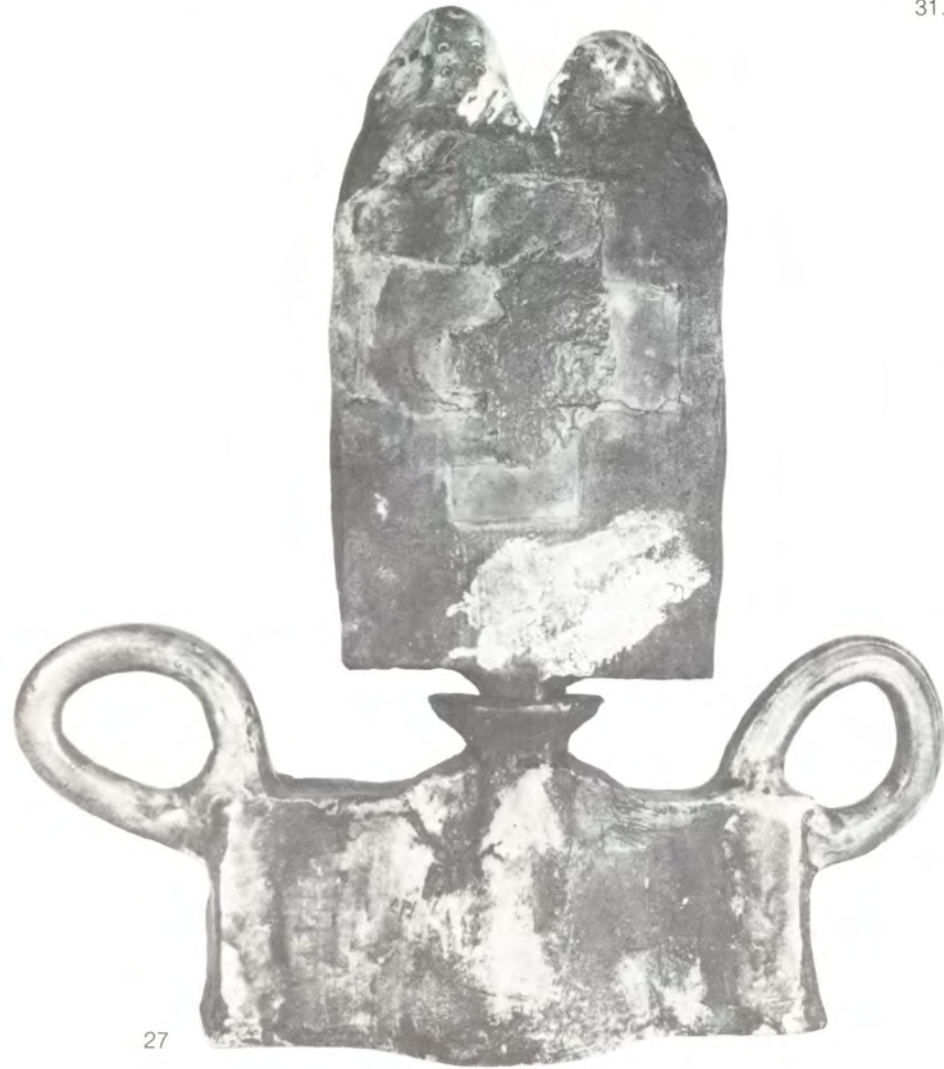
Kyoko Moriyama  
Born 1954  
Studied at Pasadena City College

25. Clay Hat with flowers, 12" x 12", low  
fire, 1975  
26. Flower Cluster, 12" x 12", low fire,  
1975

## Nagle

Ron Nagle  
Born 1939  
Studied at San Francisco State College;  
worked with Peter Voulkos

27. Bottle with stopper, 24½" x 21½",  
low fire, 1960



## Payne

Mike Payne  
Born 1948  
Studied at California State University,  
Fullerton

28. Platter, 16" x 17", stoneware, 1974

## Price

Kenneth Price  
Born 1935  
Studied at University of Southern  
California; Chouinard Art Institute; Otis  
Art Institute; Alfred University, New York

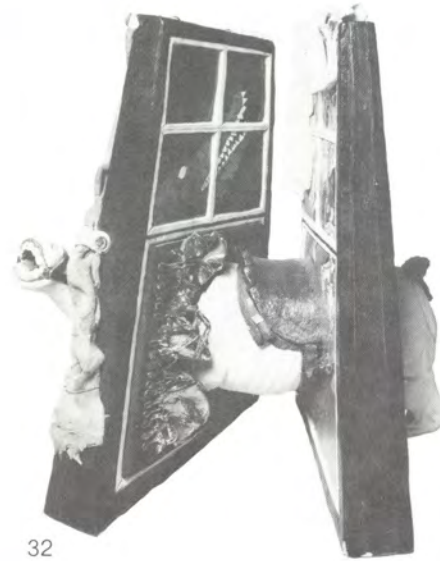
29. Vase, 17¾" x 5", stoneware, 1956  
30. Vase, 20" x 6", stoneware, 1958  
31. Platter, 11½", stoneware, 1960



## Read

Max R. Read  
Born 1943  
Studied at University of Miami; University  
of Washington; California State  
University, Fullerton

32. Sculpture, 29½" x 29", bisque  
between cone 1 and 4, engobes and  
stains, low fire overglaze, acrylic,  
1973



## Rothman

Jerry Rothman  
Born 1933  
Studied at Otis Art Institute

33. Sculpture, 28" x 26", cone 5  
stoneware, 1960



## Schminke

Jerry Schminke  
Born 1951  
Studied at California State University,  
Fullerton

34. Platter, 15¼" x 15¼", cone 5  
reduction, 1974

## Soldner

Paul Soldner  
Born 1921  
Studied at Bluffton College, Ohio;  
University of Colorado, Boulder; Otis Art  
Institute

- 35. Vase, 15" x 9", raku, 1974
- 36. Platter, 20¾" x 18¾", raku, 1969
- 37. Platter, 18½" x 22½", raku, 1974



36

## Suez

Vincent Suez  
Born 1938  
Studied at California State University,  
Fullerton; Claremont Graduate School

- 38. Platter, 17½" dia., cone 5 stoneware,  
1968
- 39. Vase, 25½" x 14", stoneware, 1968



40

## Suyematsu

Kazuye Suyematsu  
Born 1938  
Studied at University of California,  
Berkeley

- 40. Platter, 9¾" dia., porcelain, 1970

## Takemoto

Henry Takemoto  
Born 1930  
Studied at University of Hawaii; Otis Art  
Institute

- 41. Sculpture, 37" x 27", stoneware, 1958
- 42. Bottle, 32" x 28", stoneware, 1959
- 43. Platter, 16½" dia., stoneware, 1958
- 44. Platter, 16¼" dia., stoneware, 1960



43

## Voulikos

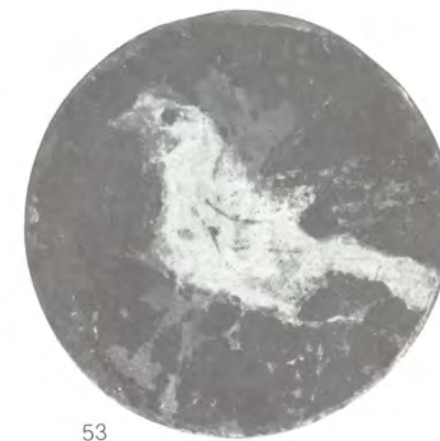
Peter Voulikos  
Born 1924  
Studied at Montana State College,  
Bozeman; California College of Arts and  
Crafts

- 46. Platter, 16" x 12¾", stoneware with  
porcelain inlay, 1963
- 47. Vase, 15" x 16", stoneware, 1958
- 48. Bowl, 6½" x 6½", stoneware, 1956
- 49. Sculpture, 17" x 11", stoneware, low  
fire overglaze, 1956
- 50. Bowl, 3½" x 5", stoneware, 1956
- 51. Lidded Jar, 26½" x 18", stoneware,  
1955



49

- 52. Vase, 27" x 17", stoneware, 1967
- 53. Platter, 11¾" dia., stoneware with  
iron inlay, 1957
- 54. Platter, 16¾" dia., stoneware, 1957
- 55. Platter, 17¼" x 18¾", stoneware,  
1973
- 56. Vase, 27" x 9", stoneware, 1952



53



## Vaea

Henry Vaea  
Born 1929  
Studied with Kawai in Japan;  
University of California, Berkeley

45. Vase, 21" x 12½", stoneware, 1965



45

## Woodman

Betty Woodman  
Born 1930  
Studied at Alfred University, New York

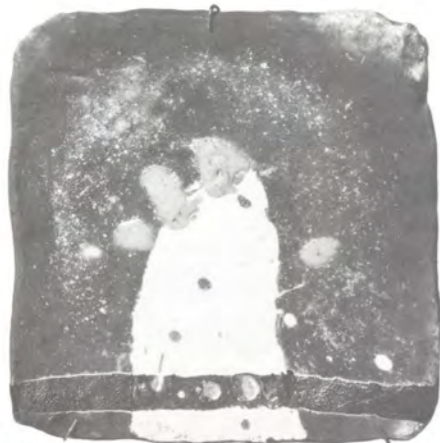
57. Vase, 12½" x 7½", stoneware, 1964

Potters of Japan

## Kaneko

Jun Kaneko  
Born 1942, Japan  
Studied as a Painter in Japan; Chouinard  
Art Institute U.S.A.; Studio of Jerry  
Rothman; University of California,  
Berkeley; Claremont Graduate School

- 58. Bottle, 9" x 13½", stoneware, 1966
- 59. Sculpture, 19" x 47", stoneware, 1971
- 60. Lidded container, 16½" x 12½",  
stoneware, 1973
- 61. Sculpture, 29" x 39", stoneware, 1968
- 62. Platter, 12¼" x 12¼", raku, 1971



62

## Mizuno

Mineo Mizuno  
Born 1944, Japan  
Studied: His family makes pottery in the  
Seto area; California Institute of the Arts

- 63. Sculpture, 36½" x 14", stoneware,  
1973
- 64. Platter, 30", Porcelain, 1969



63

## Yanagihara

Mutsuo Yanagihara  
Born 1936, Japan  
Studied at Kyoto Art University

- 65. Sculpture, 20" x 11½", stoneware  
cone 5, lustre overglaze, 1973

QLD Art Gallery



79134