

Queensland Art Gallery Foundation

Year in Review 2007–08



Queensland Art Gallery Foundation
Year in Review 2007–08



Contents

5	President's Report
9	Message from the Director
12	Queensland Art Gallery Foundation Profile
15	Queensland Art Gallery Profile
19	Membership
26	Donors
29	Collection Acquisitions
41	Financial Statements



President's Report

In 2007–08 the Queensland Art Gallery Foundation continued its vital fundraising work to support the growth of the Gallery's Collection and the presentation of exhibitions and programs across both the Queensland Art Gallery and Gallery of Modern Art. Once again, the foresight and generosity of our individual and corporate members allowed us to achieve a great deal during the year, and on behalf of the Foundation Council I extend my sincere thanks to all members.

I also acknowledge outgoing President, Sir Bruce Watson, AC, who made a significant contribution over the last 22 years. His retirement in January left a large vacuum to fill and I am very honoured to have the opportunity to step into this role. My first six months as President have already proved exciting and inspiring, and I am looking forward to continuing to work with the Council, the Board of Trustees and Chair Professor John Hay, AC, and Director Tony Ellwood to further raise the Foundation's profile and impact.

I am delighted to report the Foundation's exceptional achievement of \$8.3 million raised during 2007–08. This total figure reflects donations and bequests; sponsorships from corporate sponsors, grant agencies and government bodies; and gifted art works.

The Foundation gratefully acknowledges the generous assistance of the State Government, specifically for the funding provided by the \$250 000 government grant for acquisitions and the matching subsidy of up to \$250 000 on donations received. On behalf of the Foundation Council I would like to extend our appreciation to the Premier of Queensland, The Honourable Anna Bligh, MP, and the Minister for Education and Training and Minister for the Arts, The Honourable Rod Welford, MP, for their support of the Foundation's endeavours.

Some 287 works were acquired for the Gallery's Collection through, or with the support of, the Foundation during the year. Many of these were made possible through the very enthusiastic response from members to the Foundation's special Collection Appeal, launched in October 2007. The fundraising campaign encouraged existing and new private donors to make a cash donation to a key collection area of the Gallery, and some \$213 000 was raised in response to the appeal in 2007–08 — a fantastic achievement.

An important addition to the historical Australian collection was the painting *A view from Daylesford towards the Pyrenees* c.1864 by major colonial artist Eugene von Guérard. Austrian-born von Guérard (1811–1901) came to Australia in 1852 and is arguably the most significant artist of the colonial period. His work is an essential component of any substantial collection of Australian art but, until this acquisition, von Guérard had been represented in the Collection only by a group of lithographs. The acquisition of this work was made possible by the generous support of Brisbane gallery director Philip Bacon, AM, a valued Special Patron of the Foundation, and the work now forms the centrepiece of the Gallery's colonial landscape collection.

Purchased for the Gallery's Asian collection with funds from the Henry and Amanda Bartlett Trust was *Pair of six fold screens: Scenes from the Genji Monogatari (Tale of Genji)*. The screens, dating from the late seventeenth century (Edo period) and attributed to the Hasegawa School, depict scenes from the Japanese literary classic *Genji Monogatari (Tale of Genji)*, bringing to life tales of courtly life in the golden period of Japan. The screens feature the traditional Japanese style of *yamato-e* – simple lines used for the illustration of characters' facial features, which contrasts with the elaborate patterning on the figures' clothing and in the detailed interiors of the depicted dwellings.

The acquisition during the year of an outstanding work by internationally acclaimed artist Anish Kapoor (b.1954) strengthened the Gallery's holdings of contemporary Asian art. *Untitled* 2006–07 is a magnificent resin fibreglass and lacquer sculpture which was commissioned by the Gallery in 2006 with funds from the Foundation. The scale and saturated colour of the work, its highly reflective surface and monumental form, engage the viewer both physically and psychologically. The work was dedicated to Doug Hall, AM, in recognition of his contribution to the Gallery as Director from 1987 to 2007.

The Federal Government's Cultural Gifts Program continues to encourage individuals and companies to donate art works to public collections through tax incentives, and cultural gifts again formed an important part of the Foundation's activities during the year. One such gift comprised contemporary Chinese works from the collection of Professor Nicholas Jose and Dr Claire Roberts. Marking the second round of a generous gift and acquisition package of 17 works, most of the works date from the 1980s and 1990s — a significant period in the relationship between China and Australia and in the history of the avant-garde in China. I would like to extend my gratitude to Professor Jose and Dr Roberts and the many other generous individuals whose contributions

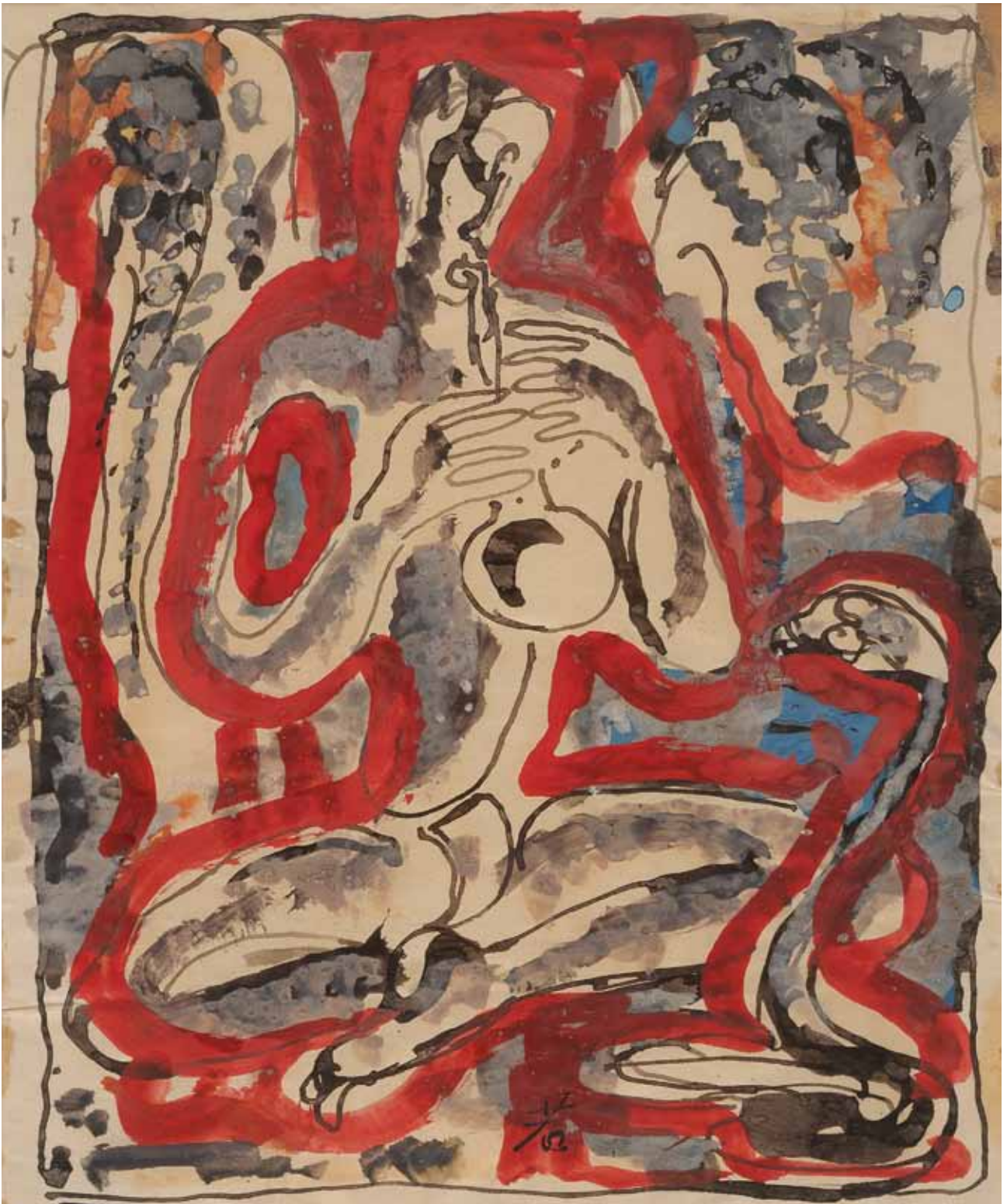
ensure significant art works enter the Gallery's Collection and are able to be enjoyed by future generations.

The Foundation membership this year has continued to grow, with 108 new members and 35 upgrading members. Members were privileged to enjoy an extraordinary program of events over the past 12 months that showcased a diverse group of international and Australian works. Highlights included private viewings of major exhibitions such as 'Picasso & his collection', 'Sydney Nolan: A New Retrospective' and 'Making it Modern: The Watercolours of Kenneth Macqueen'. In December a gala dinner celebrated the dynamic 'Andy Warhol' exhibition, and the Foundation's Annual Dinner in May was the first to be held at the Gallery of Modern Art. The Annual Dinner was enjoyed by more than 200 members including, as special guest, outgoing Foundation Patron Her Excellency the Governor of Queensland, Ms Quentin Bryce, AC. I extend my sincere thanks to Ms Bryce for her support of the Foundation, and wish her the very best in her new role as Governor-General of Australia. We also very much look forward to welcoming her successor, Her Excellency, Ms Penelope Wensley, AO, to the role of Foundation Patron.

The coming months are shaping up to be an exciting time for the Gallery and the Foundation as we work together to build on our recent achievements and further cement the crucial role the Gallery plays in enriching the life of Queenslanders and visitors to our state. I would like to take this opportunity to thank our valued Foundation members for your continued support of the Gallery and I look forward to seeing you and your guests at future Foundation events.

A handwritten signature in black ink that reads "Tim Fairfax". The signature is fluid and cursive, with the first name "Tim" and last name "Fairfax" clearly legible.

Tim Fairfax, AM
President, Queensland Art Gallery Foundation



Ian Fairweather

Scotland/Australia 1891–1974

(Snake charmer) c.1949

Gouache, ink and watercolour on paper / 21.5 x 17.5cm (sight) /

Purchased 2007. Queensland Art Gallery Foundation

© Ian Fairweather 1949. Licensed by Viscopy, Sydney, 2008

Message from the Director

My first 12 months at the Gallery has been an extremely exciting and rewarding time. It's been a pleasure throughout the year to have had the opportunity to get to know the many passionate and committed supporters of the Gallery who make up the Foundation's membership, and who contribute so greatly to the institution's continued growth and success.

2007–08 was also a time of change for the Foundation, with the retirement in January 2008 of longstanding president Sir Bruce Watson, AC. Over the past 22 years, Sir Bruce's leadership and generosity have been integral to the Foundation, and the strength of the Foundation today is testament to his invaluable contribution. Sir Bruce's spirit and dedication will be greatly missed, and I extend my sincere thanks on behalf of all at the Gallery for his many years of service.

Following Sir Bruce's retirement, we were very privileged to welcome Tim Fairfax, AM, as incoming President. As a long-time Gallery supporter, Foundation Councillor and member of the Gallery's Board of Trustees, Tim brings to the Foundation both an intimate knowledge of the Gallery and an extensive background in business and philanthropy. I would like to take this opportunity to also acknowledge the extraordinary generosity of Tim and his wife Gina Fairfax, who this year gave generously to the Gallery including a major donation towards the acquisition of international contemporary art. This donation will have an enormous and enduring impact on our Collection.

I am very proud of the Gallery's achievements during 2007–08. Alongside our two highest profile projects — the presentation of 'Andy Warhol' and 'Picasso & his collection', two major international exhibitions exclusive to Brisbane — the Gallery offered a diverse program of exhibitions, public programs and services that continued to reflect the way in which we strive for excellence, creativity and quality in all our undertakings. The exhibition program included major solo exhibitions and retrospectives of works by Queensland, Australian and international artists (including Gordon Bennett, Kenneth Macquene, Sidney Nolan, Howard Arkley and Katharina Grosse); award exhibitions such as the 'Xstrata Coal Emerging Indigenous Art Award 2007' and the 'Creative Generation Excellence Awards in Visual Art and Design'; and programs presented by the Australian Cinémathèque, including

exhibitions dedicated to moving-image and video work in GoMA's Media Gallery, and film programs in the cinemas.

During the year we also announced the establishment of a new triennial series of contemporary Australian art exhibitions that will match the scope and excitement of our flagship 'Asia Pacific Triennial of Contemporary Art' (APT) series. Like the APT, the 'Contemporary Australia' exhibitions will be held every three years over the summer period, on a rotating cycle with the APT and a major exhibition of international art. The first in the Australian series, 'Contemporary Australia: Optimism', will open in November 2008.

With the continued support of the Foundation I look forward to even more exciting times ahead at the Gallery, as we continue to build our profile as a dynamic and outstanding art museum with an ever increasing permanent Collection, thanks largely to the generosity of Foundation members. I gratefully extend my thanks to Foundation members, the Foundation Council and President Tim Fairfax, AM, for their commitment and generosity towards the Gallery this year, and offer my congratulations to all for what they have achieved for the benefit of the broader community.

A handwritten signature in black ink, reading "Tony Ellwood". The signature is written in a cursive, flowing style with a prominent flourish at the end.

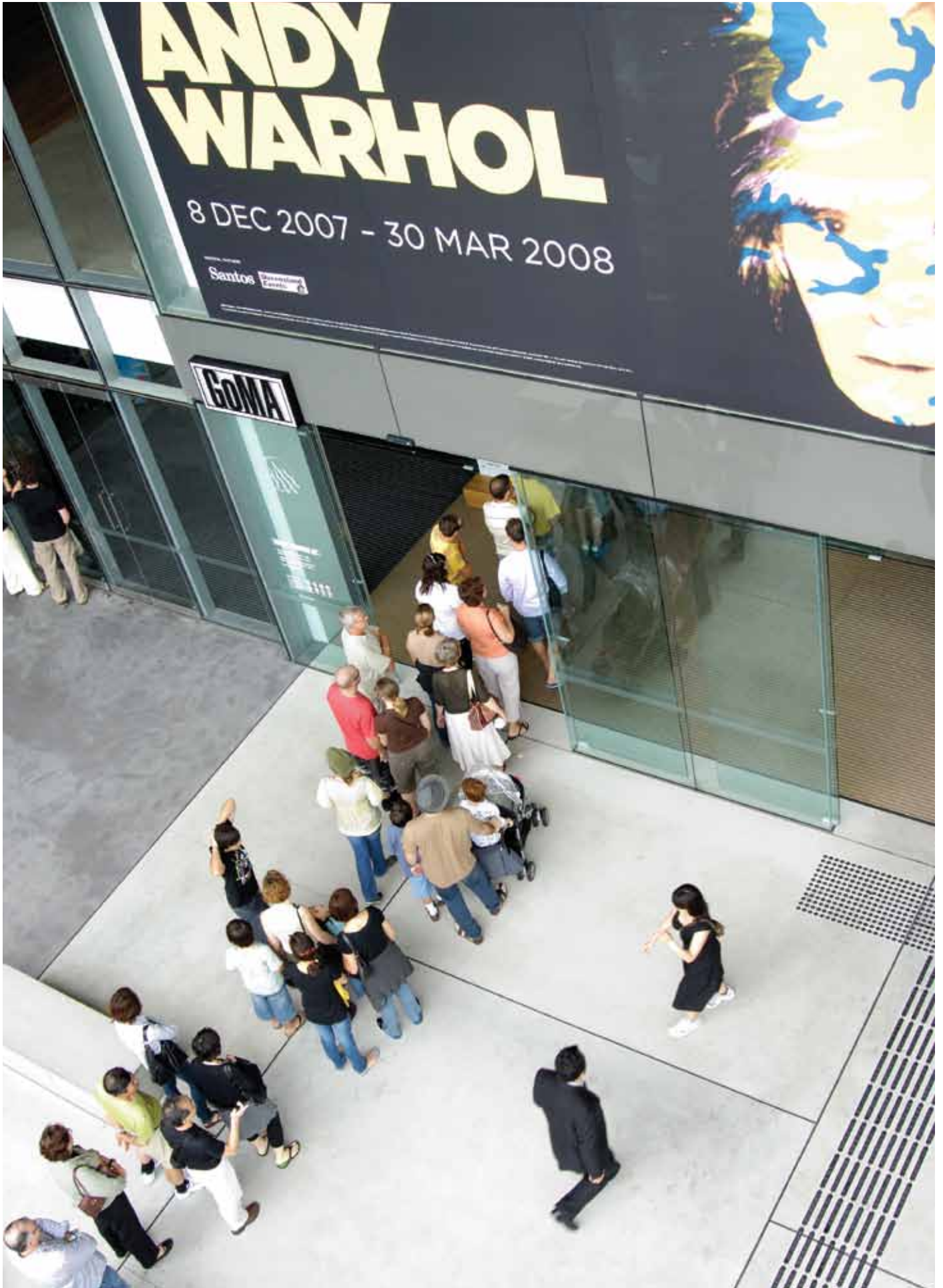
Tony Ellwood
Director, Queensland Art Gallery / Gallery of Modern Art

ANDY WARHOL

8 DEC 2007 - 30 MAR 2008

Santos

GOMA



Queensland Art Gallery Foundation Profile

The Queensland Art Gallery Foundation was established in 1979 by the Queensland Art Gallery Board of Trustees to raise corporate and private funding to support the growth of the Gallery's Collection and exhibition programs.

The Foundation assists the Gallery in three major areas. One is to provide funds to enable the expansion of the Collection. The second is to support the Gallery financially for the presentation of exhibitions from galleries and private collections within Australia and overseas. The third is to assist with a variety of community-related services such as the regional services program, which tours the Gallery's Collection throughout the regional communities of Queensland.

Supported by the Queensland Government, which contributes a subsidy on cash donations and sponsorships, the Foundation brings together the financial support of private individuals and the business sector throughout Australia and overseas.

The Foundation is open to Corporate and Individual Membership in seven categories and upgrades to higher membership categories may be made at any time.

The generosity of Foundation donors has enabled our Gallery to become one of Australia's leading art museums. Since its establishment, some 3500 art works have been acquired for the Gallery's Collection through the Foundation and over \$56.6 million raised.

With the expansion of the Queensland Art Gallery to two sites and the opening of the Gallery of Modern Art, the ongoing support from Foundation members is vital to ensure the Gallery's standing as a world-class art museum.





Queensland Art Gallery Profile

Originally established in 1895, the Queensland Art Gallery opened in its present South Bank premises in June 1982. In 2006, the Queensland Art Gallery became a two-site institution. The Gallery of Modern Art (GoMA), the largest art museum in Australia solely dedicated to modern and contemporary art, opened its doors on 2 December 2006.

Since 1982, over 12 million people have visited the Gallery. In this financial year, 541 226 people attended the Queensland Art Gallery and 763 214 attended the Gallery of Modern Art. Highlights of the 2007–08 program were two major international exhibitions, both exclusive to Brisbane. Attendances of more than 232 000 were achieved for the 'Andy Warhol' exhibition, which opened on 8 December 2007 — just one year after GoMA's opening. The Gallery launched another major international exhibition, 'Picasso & his collection', on 9 June 2008.

High profile large-scale projects such as these are part of a dynamic program of exhibitions and events presented across both sites, complemented by interpretive programs and publishing. The program reflects the opportunities provided by the expanded and upgraded two-site infrastructure. In addition to exhibitions organised by the Gallery, the program also includes displays from the Collection and major new acquisitions. The Collection, including the internationally recognised contemporary Asian and Pacific collection, includes 13 164 works. The Gallery's engagement with the Asia Pacific region also continues with the ongoing activities of the Australian Centre of Asia Pacific Art, the research arm of the Gallery's Asia Pacific activities.

The Australian Cinémathèque is a successful and integral part of the Gallery's programming. Launched in 2005, the Cinémathèque is the only one of its kind in an Australian art museum, and it collects, conserves, presents and interprets film and screen culture.

Committed to strengthening relationships with Queensland's Indigenous communities, the Gallery profiles the artistic practice and cultural life of Indigenous Australia through its exhibitions, programs and Collection. The Gallery's Collection comprehensively represents the vibrant cultural practices of Queensland's Indigenous artists.

Anish Kapoor

England b.1954

Untitled 2006–07

Resin fibreglass and lacquer / 500cm (diam.) x 555cm (installed) / Commissioned 2006 with funds from the Queensland Art Gallery Foundation in recognition of the contribution to the Gallery by Doug Hall, AM (Director 1987–2007)

The Gallery's exhibitions and collection displays are supported by varied and innovative public programs, and a comprehensive educational program that serves the needs of a wide range of children as well as schools, universities and the broader education sector.

The success of the children's exhibitions and programs has placed the institution at the forefront of children's programming in art museums worldwide, and the programs and achievements of the Children's Art Centre demonstrate the Gallery's commitment to young visitors and families.

Travelling exhibitions, educational services and professional development opportunities are provided to regional and remote Queensland through the Gallery's Regional Services program. The Queensland Art Gallery is the only state gallery to provide an ongoing and comprehensive program of Collection-based travelling exhibitions and public programs to regional areas as part of its core business.

The Gallery recognises its capacity to contribute to Queensland's cultural tourism achievements, and works in collaboration with tourism sector partners to promote exhibitions and programs to local, intrastate, interstate and international audiences.

The Queensland Art Gallery Foundation assists the Gallery by raising vital funds from individuals and the corporate sector, and through cultural gifts and bequests, to support the growth of the Collection and the presentation of exhibition programs.



Zhu Weibing

China b.1971

Ji Wenyu

China b.1959

People holding flowers 2007

Acrylic paint on resin; velour, steel wire, dacron, lodestone and cotton / 400 pieces:
102 x 17 x 11 cm (each) (installed dimensions variable) / The Kenneth and Yasuko Myer
Collection of Contemporary Asian Art. Purchased 2008 with funds from Michael Simcha Baevski
through the Queensland Art Gallery Foundation / Image courtesy: ShangART Gallery

SIDNEY NOLAN

A New Perspective



Membership

As at 30 June 2008

Special Patron

Adshel
 Ai Weiwei
 Annabel Anderson
 Philip J Bacon, AM
 Michael Simcha Baevski
 The Henry and Amanda
 Bartlett Trust
 Francesco Conz
 Grace L Davies (dec'd)
 Nell C Davies (dec'd)
 In honour of Tory & Beatrice
 Cossart of Boonah – the gift of
 James Ellis (dec'd) & Jessica Ellis
 (dec'd)
 Gina M Fairfax ▲
 Tim V Fairfax, AM ▲
 Ann Gamble Myer
 Max Gimblett
 Nicholas Jose and Claire Roberts
 Lawrence F King (dec'd) in memory
 of the late Mr and Mrs SW King
 Yayoi Kusama
 Lee Ufan
 Mazda Australia Pty Limited ▲
 Daphne Morgan
 The Myer Foundation
 Network Ten (Brisbane) Pty Ltd
 Timothy North and Denise
 Cuthbert ▲
 Queensland Events Corporation
 Pty Ltd ▲
 Queensland Newspapers Pty Ltd
 Santos Ltd ▲
 Singapore Airlines Limited
 James C Sourris

Patron

Austereo Brisbane Ltd ▲
 Australia Council
 Dr Norman Behan, AO, CMG, LLD
 (Hon.) (dec'd)
 Brisbane Marketing ▲
 Foster's Australia
 Idemitsu Kosan Co. Ltd

Mike Parr
 Alan and Jancis Rees
 Rio Tinto Alcan ▲
 William Robinson, AO, and
 Shirley Robinson
 Sir Hercules Sinnamon, OBE
 (dec'd)
 In memory of Vincent
 and Johanna Stack
 Tourism Queensland ▲
 Xstrata Coal Pty Ltd

Vice Patron

Airey family ▲
 Art Exhibitions Australia Limited
 Major Brisbane Festivals
 Cathryn Mittelheuser, AM ▲
 Margaret Mittelheuser, AM ▲
 Margaret Olley, AC
 Seven Network
 The Thomas Foundation
 Xstrata

Governor

Ah Xian
 Andrew Thyne Reid Charitable Trust
 Anonymous
 Anonymous
 Australia-Indonesia Institute
 Bank of Queensland Limited
 Mr and Mrs Peter W Bray
 Brisbane City Council
 Centenary of Federation
 Queensland
 Coles Myer Ltd
 Commonwealth Bank of Australia
 Creative New Zealand Arts Council
 of New Zealand Toi Aotearoa
 Lauraine Diggins ▲
 James Fairfax, AO
 Gadens Lawyers
 George Patterson Y&R
 Gordon Darling Foundation ▲
 Ian Holland (dec'd)

James Hardie Industries Limited
 W Ross Johnston
 Geoff Kleem
 A Ray Lewis
 Jack Manton Benefaction
 Phillip and Barbara McConnell
 Meiji Yasuda Life
 Insurance Company
 James Mollison, AO
 Motorline BMW
 National Australia Bank Limited
 News Limited
 Nikko Securities Australia
 Nomura Australia Limited
 Roslyn and Tony Oxley
 Pioneer Sugar Mills Limited
 The Potter Family Trust
 PricewaterhouseCoopers
 Conty M Robinson (dec'd)
 Samsung Electronics Australia
 Alan CA Thiess
 G Bette Tipper
 Melvyn G Tipper
 Lady Trout (dec'd)
 Ashby Utting ▲
 Sir Bruce Watson, AC ▲
 Lady Watson
 Lyn Williams

Founder Benefactor

ABC Television
 Accor Hotels and Resorts
 ANZ Banking Group Ltd
 Australia-China Council
 Australia-India Council
 Australian Posters
 Robin Bade and Michael Parkin
 BHP Billiton Limited
 Boral Limited
 Marion Borgelt
 William D Bowness ★
 Stephen Bush ★
 The Hon. Ian Callinan, AC
 Castlemaine Perkins Limited
 Estate of the late Margaret Cilento ★
 Clemenger ★
 Patrick Corrigan, AM ★
 Corrs Chambers Westgarth
 Dr Jim Cousins, AO, and
 Libby Cousins ★
 CSR Limited
 David Jones Limited
 Estate of the late Sally Welch
 Edwards
 Dr Paul Eliadis

Friends of the Queensland
 Art Gallery
 Robin F Gibson, AO
 Simryn Gill
 Dr Nicholas S Girdis, CBE
 James T Gleeson, AO
 Goldman Sachs JBWere
 Jocelyn R Gow
 Charles and Cornelia Goode ★
 Barbara and Peter Grant
 Katharina Grosse ★
 Doug Hall, AM
 Evelyn F Harrison
 Phillip C Harrison
 HarrisonNess
 Haulmark Group
 May Heck
 Hitachi Australia Ltd
 Margaret Hockey, OAM (dec'd)
 in memory of Patrick Hockey
 Japan Travel Bureau (Aust.) Pty Ltd
 J Johnstone
 Wayne N Kratzmann
 Nigel Lendon
 Louis Vuitton Australia Pty Ltd
 Dr Morris Low
 Macquarie Group Foundation
 The Manton Family in loving
 memory of Joyce Mary Snelling, MBE
 Jennifer J Manton
 Estate of the late Ouida Marsten
 Joyce G McCracken (dec'd)
 John M Michelmore
 Naomi Milgrom ★
 Mitsui & Co. (Australia) Pty Ltd
 Ivor G Morris, CMG
 Douglas GM Murphy, AM (dec'd)
 and A Nancy Murphy
 NQX Freight System
 F Valmai M Pidgeon, AM
 QANTAS Airways Ltd ★
 Queensland Alumina Ltd
 Betty P Quelhurst
 Quest Community Newspapers
 Anne Regan
 Rio Tinto Limited
 George V Roberts, CBE
 Sir Albert Sakzewski (dec'd)
 Screen Offset Printing
 Lady Yoko Fukano Sewell
 Shell Company of Australia Limited
 Noela Shepherdson (dec'd)
 The Sidney Myer Fund
 Christopher Simon
 Drs Philip and Lenna Smith
 Heather M Stoney
 Thiess Pty Ltd

★ Denotes new member

▲ Denotes an upgrade of member level

Foundation members and guests at the 'Sidney Nolan:
 A New Retrospective' Foundation private viewing,
 June 2008, Queensland Art Gallery.

Steven Tonge
Utah Foundation
Westpac Banking Corporation

Fellow

ACI Glass Packaging Australia
Allens Arthur Robinson
Richard Anderson, *OAM*, and
Margaret Anderson
Joy A Anton
Architectus ★
Ausenco Pty Ltd ★
Arija Austin
Australia-Korea Foundation
Russell F Banham
C Ian Barclay, *CBE, AM* ▲
Sylvia D Bassingthwaighte
Barbara Bedwell
Adeline G Bell (dec'd)
Edward P Benson, *AM*
John L Bickford
Barbara Blackman
BP Australia Limited
British Council Australia
Brookfield Multiplex
Developments Pty Ltd
Geoffrey Brown
Kay E Bryan
Bundaberg Sugar Ltd
Avril Burn
Dr Sheena Burnell
Thomas R Burrell, *OBE*
Con & Anne Castrisos ★
Irene Chou
ClarkeKann Lawyers
Daryl Clifford ▲
The Hon. PD Connolly, *QC, CBE*
Elizabeth M Cooper (dec'd)
Tim Bl Crommelin
Dr Ailbhe M Cunningham ▲
Dr W Frank Cunningham ▲
Winifred Davson, *MBE*
Robyn Daw ★
Domenico de Clario
eX de Medici ★
Kiernan D Dorney, *QC*
Barbara Duhig ▲
G June Dunn
Dr Damon Eisen
Robyn Elphinstone ▲
Ergon Energy
Ernst & Young ▲
The Hon. Paul Everingham, *AO*
B R Fadden
Peter Fay
Joan I Fletcher

Dr Ross Forgan-Smith
Dr Ian H Frazer ▲
Islay W Frazer-Ryan
Ian and Christine George
Marian Gibney
Ailsa J Gillies
Dr Judith H Gold, *CM*, and Dr
Edgar Gold, *AM, CM, QC*
Professor Kenneth L Goodwin, *AM*
Wayne K Goss
Jack Grace and Janet Grace
Ian J Gray
Alan E Greenaway
Dr Margaret Greenidge
Lillian B Gresham, *MBE* (dec'd)
CD Neil Griffin
Richard and Bettina Groves
Andrew and Felicity Gutteridge
Dr Bruce H Gutteridge, *AM, ED*
(dec'd)
Dorothea Haly
Gail Ann Harrison ▲
Tricia Hatcher ★
Michael B Hawkins
Robert A Henderson, *CBE* (dec'd)
Dr Keith E Hirschfeld
E (Manny) Hirsh
Margaret I Hofmeister ▲
HSBC Stockbroking
Dr Frederick Hunt
Hyne and Son Pty Ltd ★
ITOCHU Australia Ltd
JL Mactaggart Holdings Pty Ltd
Keith M James
Elizabeth M Jameson
Japan Foundation
Anthony and Francine John
Dr Elaine B Katte
Dr Dominic H Katter, *RANR*
Mary Jo Katter
Shirley King, *OAM*
Kraft Foods
Dr Gertrude Langer, *OBE* (dec'd)
Lady Leggo (dec'd)
Leighton Contractors Pty Limited
Janet L Leighton
Philip M Leslie
Shirley Leuthner ▲
A Muriel Loveland (dec'd)
Alex Mackay
Dr James MacKean
John A Maclean, *MBE*
Macmillan Publishers Australia
Pty Ltd
John Mainwaring ▲
Frank J Manning
David and Jan Manton

Melissa M Manton
Mathers Shoes Pty Ltd
Dr and Mrs BT McCann
Christine A McDonald
Donald FT McDonald, *AM, OBE*
Cameron McTavish ★
Rosemary C Mercer (dec'd)
Don Mitchell
Mobil Oil Australia Ltd
Moët & Chandon Australian Art
Foundation
Milton Moon, *AM*, and Betty Moon
Dr John Morris
Estate of the late Kathleen
Elizabeth Mowle ★
Donald F and Anne Munro
Judith Musgrave
Myer Queensland Stores Ltd
Kenneth B Myer, *AC, DSC* (dec'd)
S Baillieu Myer, *AC*
AJ Myers, *QC, AO* ▲
Deborah Newell
Elizabeth A Nosworthy, *AO*
Christine Nye
Daniel L O'Connor
Ewan G Ogilvy
Elizabeth Ord Burns ★
Orica Limited
John Panizza, *OBE* (dec'd)
William A Park, *CBE, AM*
Ross C Parry
Constantine M Philippides, *OBE*
(dec'd)
Sally Pitkin ▲
Blayne and Helen Pitts
Rashid Rana
Scott Redford
Marilyn Redlich
Lyndal Reid in memory of the late
James Baxter Reid
Barbara Reye
Ruth Richardson ▲
Margaret Ridley ▲
Dr Gillian J Ritchie
Dr John & Mrs Elizabeth Rivers
Professor Alan G Rix
Richard A Roberts
Carl C Robertson
Editha M Robinson (dec'd)
R Scott Robinson
Patricia L Ryan
Sarina Russo Group ★
Ross Searle ★
Professor Tom Shapcott, *AO*
M Ann Shevill
Leonard Shillam, *AM* (dec'd),
and Kathleen Shillam, *AM* (dec'd)

David G Slater
Nigel GW Smith
Sir Edward Stewart (dec'd)
Mary Stewart, *MBE* (dec'd)
Kerry Stokes, *AO*
Estate of the late Betty Taylor
Everil Taylor
Johanna J Thannhauser
Nicholas Thompson
Ian Thornquest ▲
Transfield Pty Ltd
Beverley A Trivett
Margaret Tuckson
Dr Caroline Turner and Dr Glen
Barclay ▲
Peter Tyn dall
Edite Vidins
Mo Wedd-Buchholz
Richard Werner
Brian White
Robert M Wilson (dec'd)
Bruce Wolfe ▲
Ken Woolley, *AM*
Judith Wright
Wellington and Virginia Yee

Member

ABN AMRO Australia Limited
Dr Peter C Accornero
Stefan Ackerie
Dr R Ronald Adam
Simeon R Adams
Margaret J Adnam ★
Dr Philip D Aitken
Dr Graham I Alexander, *AO*
Dr Bruce N Allan
Dr Janet M Allan
Margaret E Allan
Sir William Allen, *KCSJ*
Cate Allen-Ducat ★
John G Allpass
Dr Tony M Allworth
Amcor Limited
Dr Irene Amos, *OAM*
Karen Amos
Dr Joan Anderson
Dr Juliet W Anderson
Marian W Anderson
Diane M Andrews
The Hon. Sir Dormer Andrews
(dec'd)
Trudy Andrews
Anonymous
Anonymous
Anonymous
Anonymous ★

- Anonymous ★
 Anonymous ★
 Ansell Limited
 Josephine A Ansett
 J Hamish Anton
 Dr Ross Applegarth
 ARC Engineering Pty Ltd
 Art Land Indooroopilly
 Dr John F Arvier, OAM
 Helen Ashdown
 Michele Askin
 Maibry A Astill
 Christopher E Atherton
 Dr R Leigh Atkinson
 Sallyanne Atkinson ★
 Dr Reiko Atsumi
 Richard WL Austin, AO, OBE (dec'd)
 Australia–Malaysia Institute
 Australian Decorative & Fine Arts
 Society (Brisbane) Inc.
 Australian Film Company
 Australian Provincial Newspapers Ltd
 Dr Jean Avery
 June M Avery
 Michael and Anne Back
 Dr Marion Badgery
 Robert M Badgery
 Earle W Bailey, OAM
 Andrew Baker
 Dr Glen Barclay
 Ms Jill Barker ★
 Kenneth A Barlow
 The Hon. CE Barnes (dec'd)
 John EM Barnes
 Michael Barnett
 Pamela Barnett
 Cheryl Barnhart ★
 Dr David B Bartholomeusz
 Professor Perry Bartlett
 Dr John Bashford
 Lyndall Bass
 Douglas D Bates
 Catherine E Baudet
 Dell K Bayly
 Harry Baynes
 Viola Beard
 Dr Graeme L Beardmore
 Sharon N Beckett
 Dr David Bedford
 Lillian H Beer (dec'd)
 Sally Behrens
 Amanda Bell
 Judith Bell
 Pamela N Bell, OAM (dec'd)
 Peter Bellas
 Diana Bendeich
 John V Bensted (dec'd)
- Donn and Louise Berghofer ★
 Dr JH Nicholas Bett
 Mern E Bett
 Dr A Bruce Biggs, OAM
 Dr Walter W Biggs
 Dr Robert J Black, RFD
 Anne-Margaret Blackburne
 James C Blackburne
 Janice P Blackford
 Osmar J Blau
 Christopher TC Blue
 Marlene Blunt
 BOC Gases Limited
 David K Boddice
 Mrs Victoria Boogers
 Susan Bothmann
 Dr Peter D Botsman, AM (dec'd)
 His Honour Judge HWH Botting
 Dr James Boubaris
 Roxanne Boulton
 Bovis Lend Lease Pty Limited
 Patricia H Boyd
 Dr Philip D Boyle
 Dr Peter B Boys
 His Honour Judge Charles JL
 Brabazon, QC
 Dr Jane L Bradbear
 Gail S Bradley
 Archdeacon Robert Braun
 Sir Theodor Bray, CBE (dec'd)
 Carolyn Brennan
 John R Brennan
 Ngairretta J Brennan, AM
 Susie Briggs
 Kathryn A Brimblecombe-Fox
 Suzanne Brooks
 Andrew M Brown
 John FS Brown, AO, MC (dec'd)
 Dr Alison Bruce
 Dr William L Bruce
 Linda Brucesmith
 Dulcie E Brumfield
 Dr Stewart J Bryant
 Susan Bryant ★
 Professor Michael J Bryce, AM
 Dr Robert J Buck
 Daphne M Buckley, OBE
 Lindsay Buckley, AM
 Gary Bugden, OAM
 Professor Keith J Bullock
 Dr Ian H Bunce
 Margaret Bunce ★
 Dr John Burgess
 Peter Burke ★
 Chris T Burrell
 Christine Burton
 Dr James W Butler
- Veronika Butta
 Karen Byatt
 The Hon. Mr Justice John Byrne, RFD
 Mavis G Byrne
 Betty Byrne Henderson, AM
 Dr Jenny L Byth
 Dr Susan Byth
 Peter J Callaghan
 Caltex Australia Petroleum Pty Ltd
 Cathy Cameron
 Dr Donald P Cameron, AO
 Dr Lillian Cameron
 Allan J Campbell, AM, OBE, OMRI
 (dec'd)
 Dr Christine Campbell ★
 Douglas J Campbell, SC
 Kenneth C Campbell (dec'd)
 The Hon. Sir Walter Campbell, AC,
 QC (dec'd)
 Natasha R Camphorst
 Dr M Cannon
 John Caravousanos
 Peter D Carne
 Arthur B Carter (dec'd)
 Peter Carter
 Tess Carter
 Vernon G Carter (dec'd)
 Kerrel Casey
 Margaret M Cassidy
 Dr Rosanne E Casu
 Jennifer Cavanough ★
 Helen M Cavill
 Cement Australia
 The Hon. Sir Gordon Chalk, KBE, LLD
 (Hon.) (dec'd)
 Nigel A Chamier, OAM
 Paula E Chandler
 David S Charlton
 Ian Douglas Charlton
 John F Charlton
 Jason Chen
 Dr Mervyn Cheong
 Mrs Nan Chesterman
 The Hon. Justice Richard N
 Chesterman, RFD, QC
 Christie's Fine Art Auctioneers
 Dr Peter Clark Ryan
 Beth Clark-Coollee
 Glennie Clarke
 Richard E Clarke
 Roger B Clarke
 Margaret Clarke
 Varro P Clarke
 Gillian K Clifford
 Emeritus Professor H Trevor
 Clifford
 Dr Paul K Close
- Dr Andrew D Clouston
 Coca-Cola Amatil Queensland
 John K Cockburn
 Dr Steven A Cocolas
 Dr David Cohn
 Dr Nolene Cole
 Reginald W Collins (dec'd)
 Dr David Colquhoun
 Dominic Condon
 Ian F Conlon (dec'd)
 Amanda C Connolly
 Ellen Connolly
 William AH Conrad
 Charles Ignatius Cooke
 Chloe Josephine Lily Cooke ★
 Glenn R Cooke
 Dr Madeleine Camille Cooke ★
 Professor W Graham Cooksley
 Siobhán Cool
 Don and Heather Cooper
 Catherine and Peter Cooper
 Bridget Costello
 Barbara M Cottee
 Trevor J Cottee
 Pat Counihan
 Dr Melville H Court
 Graham R Cousins
 Sir Thomas Covacevich, DFC (dec'd)
 Dr Alicia Cox
 John R Cox
 Dr Len Cox ★
 Sarah Cox ★
 Ron L Coxhell
 Christopher T Coyne
 Professor Teresa R Cramond, AO, OBE
 Alex P Crawford
 Paul Crawford ★
 Dr Francis B Crimmins
 Margaret Crombie
 Betty Crouchley
 Andrew B Crowe
 Althea Crowley
 James G Crowley, RFD, QC
 Sir James Cruthers
 Wendy A Cull
 Clinton Cunningham
 E Russell Cuppaidge, CBE (dec'd)
 Jude Daley
 Sheila Dalton
 Lindee Dalziell
 L Gordon Darling, AC, CMG
 Marilyn Darling
 Victor C Darling (dec'd)
 Dr Michael C Darveniza
 Emeritus Professor Mat
 Darveniza, AO
 Christine L Dauber

- Donald R Davies
Edwina Davies ★
Martine R Davies
Thea M Davies
Dr Neville Davis, AO
John de Groot
The Hon. Mr Justice Paul de Jersey, AC
Professor Diego De Leo
Rhonda Luarna De Tournay
Deacon & Milani
A Gordon Dean
Iris L Dean
George W Deeb
Barbara A Delmenico
Deloitte Touche Tohmatsu
Department of Foreign Affairs and Trade
The Hon. Justice DK Derrington, QC
John P Deshon, AM
Pamela M Deshon (dec'd)
M Teresa Desmarchelier
Rebecca Diamond
Kevin Dick
Jenny Dickerson
B Mary Dickinson
Ian Dickson
Margaret Dickson ★
John and Di Dimitriou
Sue and Doug Disher
Dr Jill P Doley
Ann Donald
Andrew B Douglas
Jenny Douglas
The Hon. Justice Douglas, RFD, QC (dec'd)
Richard J Douglas, SC
Rosemary N Douglas
Robert J Druitt
Dr Graham J Drummond
Dr Philip Dubois
Halina Duce
Professor Hugh Dunn, AO (dec'd)
Miranda and Peter Dunning
Dr William Earnshaw
Dr John WS Earwaker
M Elizabeth Earwaker
Nicholas Eden
Elizabeth N Edwards (dec'd)
The Hon. Sir Llewellyn Edwards, AC
Lady Jane Edwards, AM
Stewart Edwards
Angelo Efstathis, CBE, OAM (dec'd)
Stathis E Efstathis
Gregory M Egan
Dr Roger Morwood Egerton
Dr William S Egerton
- Professor John Elkins
Professor Bryan T Emmerson, AO
Nigel Emslie
Energex Limited
Marilyn England
Enthalpy Pty Ltd ★
Anthony D Evans
Olive M Evans
Anthony Everingham
Dr Bill J Everingham
Robert Everingham
Dorothy B Eyears
Fairweather Proberts Architects
Cecile F Falvey, OAM
Cr Felicity Farmer
Maria Feez
Peter Fenoglio
Peter David Ferguson
Mercia Ferrier
Desley Finlay
Sir George Fisher, CMG (dec'd)
Lady Fisher
Kate Fitzgerald
Ann A Fitzpatrick
Dr Marylou Fleming
Margaret Fletcher
Owen Fletcher (dec'd)
Dr Timothy HJ Florin
Sir James Foots, AO
Vicki Foots
Leneen Forde, AC
Colin Forrest ★
Dr Michael Forrest ★
Susan Forrester
Dr Bruce Fraser
Ian Graeme Fraser
James Freestun
Dr Isobel G Furnival
Norman Coldham Fussell, AO
Joyce Fynes-Clinton
Craig Fynmore
Paul L Gaffney
Helen Gargett
Denise E Garnsey
John M Garnsey
Dr Rachel Garraway
Dr Elizabeth Gass ★
Professor Greg Gass ★
Anne D Gately
Sybil AW Gauld
Patrick V Gay
Dr Paul Georghiou ★
Frances Gerard ★
S Gillard
Daina Gillespie
Susan Gillespie-Lawrie
Mark Girard ★
- Dimitri Glianos
Susan Goddard
Goethe-Institut Australien ★
Susan Golledge
Keith G Goodsall
Matthew L Goodwin
Harry A Gordon, CMG, AM
Megan Gore-Jones
Professor Ian R Gough
Dr Ruth Gough
Brad W Gould
Neil M Gow, CMG ★
Janye Graham
SV Gray
Douglas Green (dec'd)
Professor Paul Greenfield, AO
Dr Robert S Greenhill, RFD
The Hon. Justice Andrew Greenwood
Dr Bernard L Greer
Bela Grenacs
Philip Gresham
John A Griffin, QC
Dominique K Grigg
Elizabeth R Grigg
Frank W Grigg
Dr Lyn Grigg
A Glen Gummow (dec'd)
Peter G Gummow
Dr V Patricia Gunn
Angela Gunningham
GWA International Limited
Peter W Hackett
D Matthew Hall
Jacqueline M Halligan
Teresa M Hamilton
Dr Jane Hamlyn
Cedric EK Hampson, AO, RFD, QC
Ailsa Handicott
Teresa G Handicott
Steffi Harbert ★
Dr Rick D Harden
Dr Phillip E Harrington
Dr Fiona M Harris
John Harris
Dr Owen D Harris
Dr Trevor J Harris
Gailene M Harrison
Barry Hart
Trish Hart
Alan G Hartland
W Raymond Hartland (dec'd)
Peter G Harvey
Angus Harvey Ross
Margot Hawker
Dr Rosemary Hay
John J Haydon
- Edward and Penny Haysom
Dr Lorna M Heaslop
Dr William R Heaslop
Peter Heathcote
Anita Hedy Hochman ★
Bruce Heiser
Margaret J Henderson
B Blair Heslop
Pamela L Heslop
John H Heussler, AM
Dr Eric Hewett
Susan Hewett
Pamela A Hewson
Claire Hickey
Justine Hickey
Dr Beryl M Hinckley, OBE (dec'd)
Donna Hipgrave
Dr Christina E Hirst
Crow Hirst
Ross M Hirst
The Hon. Marcus B Hoare, CMG (dec'd)
Graham Hobbs
Dr Geoffrey Hocker
Dr Barbara A Hocking
Professor John Hockings
Keith E Hoehnke
Pauline Hoehnke
Marilyn Hoey
Dr Pat HOFFIE
Janet D Hogan
Dr Michael L Hogg
Ian W Holman
Kathi Holt-Damant
A Stanley Honey
Carolyn Hope
Raymond G Hope, OBE (dec'd)
Mary Elisabeth Hopkins
Gabrielle Horan, OBE (dec'd)
Alexander AJ Horneman-Wren
Adriana Hornsby
Dr Kenneth F Hossack
Keith S Howe
Dr Walter L Hughes, CBE (dec'd)
Kylie Hunt
Dr J Craig Hunter
Karl Hutter ★
Judy Hutton
EF (Peter) Huybers
Geoff L Hyland
Loretta Bertoldo Hyne
Richard L Hyne
Incitec Pivot Limited
Robert A Ingham-Myers
Graeme A Ingles
His Honour Judge Marshall P Irwin
Rex Irwin

- Judy James
Michelle James ★
Dr Ron James ★
Major General WB Digger James
(Rtd), AC, MBE, MC
Dr Marie L Jameson, MBE
William G Jameson
Jasco Pty Ltd
Jan Jenyns
Sharon John
Mary M Johnson
Anne E Johnston
Barry EJ Johnston (dec'd)
Kim L Johnston
Alan Johnstone
Jennette Johnstone
Mathew Jones
Rex L Jones (dec'd)
Martin and Jan Jorgensen
Dr Robert E Junner
JUT Foundation ★
Mrs Ann Kartal
Hiro Kawamata
Professor Anne Kelso, AO
Dr Bradley J Kendall
Helen Kerr
John D Kerr (dec'd)
C Kim Khoo
Suzanne F King
Her Honour Judge Fleur Kingham
Peter and Elizabeth Kingston
Dr Christine Kirkegard
Scott Kitching
Dr Alexander Klestov
Dr Bartholomew Klug
Anthony Knight, OAM, and Beverly
Knight
Helen Knottenbeld
Noel A Kratzmann (dec'd)
Donna Krosch ★
Dr Richard K Lamprecht
Dr Kay Lane
Dr Glen F Langford
Noel Langton ★
Dr Leo S Launitz-Schurer
Alan K Lavis, AM
Susan Learmonth
Dr John F Lee
Sir Jack Leggo, DFC, and BAR (dec'd)
Jo LeMass
Yvonne E Levien
M Ann Lewis, AM
Brenda Lewis
Pamela Lewsen
Richard IM Lilley
Dr Gary R Lillicrap, AM
Lin Chun-hsiang ★
- Lin Ming-nang ★
Elizabeth Ling
Dr Vivienne M Linnett
Fred W Lippiatt
Professor Andrew M Lister
Alathea Livingstone ★
Lurlene H Livingstone
Dr Mark E Loane
John Lobban
John A Logan, RFD
Sir David Longland, CMG, LLD (dec'd)
Dr Marilyn V Longmuir
Dr Arthur Love
Barbara M Lynch
Victoria Lynn
Peter J Lyons, OC
Roz MacAllan
Bettina MacAulay ★
Desmond MacAulay ★
Donna M MacCallum
Jennifer MacMillan ★
Dr Dianne Maccheroni
Sally Macfarlane
Sandra M Mackiehan
Cheryl C Macnaught
Macquarie Bank Limited
A Glen Mactaggart
Robert DC Mactaggart
Jens Michael Madsen
Raymond H Mainwaring (dec'd)
Mallesons Stephen Jaques
Richard G Malouf
Clarrie M Manning, OBE
Mappin's Nursery
Andrew R Marjason
C Arthur B Marjason (dec'd)
Pamela Marsden ★
Marsh
Reg and Sally Marsh
Kathleen M Marshall
A Enid Martin (dec'd)
Lorraine Martin, AO
Mark D Martin
Peggy C Martin
Susan Martin
Patricia Martyn
Dr Leslie Francis Masel
Helen Anita Mason
Nik Mastrapostolos
Sir Robert Mathers, OMRI
Lady Mathers (dec'd)
Professor John S Mattick, AO
David B Maunsell
Lady McAllister
Sir Joseph McAvoy, CBE (dec'd)
Dr Audrey McConnel
Dr David H McConnel
- Bunny McConnell
Dr Joe G McCormack
The Hon. Alan K McCracken
(dec'd)
Mary McCracken
Stephen P McCready
Janetta McDiarmid
Keith H McDonald, OBE
Dr J David S McEvoy
Jennifer A McFarlane
Katrina McGill ★
Brian R McGregor
Ms T Mclvor
John D McKenna
Richard McKeon
M Thomas McKerrell
Ross McKinnon, AM
Margo McLay
Jane M McLean
Shirley McLean
Jennifer McLennan
Eunice McLeod
Dr G Rod C McLeod, AO, RFD
Scott McLeod
The Hon. Justice Margaret
McMurdo, AC
Eleanor S McNab
Helen McVay
Robyn Megson ★
Patricia Mellick
Dr Selim A Mellick, CBE
Raoul OJ Mellish
Danie Mellor
Philip Mendes
Jennifer M Menso
Bill Menzies
Garry Menzies
Dr Andrew D Mercer
Maria Merlo
A Lorrie Miles
Gordon Miles
Tia Milham ★
Henry J Milne
M Patricia Mitchell, OAM
Sally Mitchell
Peter Moffat
Douglas G Moffett
Patricia M Moffett
Dr Ruth Molphy
The Hon. John C Moore, AO
Sarah J Moore
Raymond Morley
Timothy G Morrell
Mrs GO Morris
Harriet Morrow
Charles R Mortensen, AM
Karen Mortland ★
- Astrid Moss
Helen J Moye
Dr Ralf Muhlberger
Dr Christopher B Muir
Sir David Muir, CMG (dec'd)
Dr James Muir
Carole C Mules ★
Dr Terrence R Mulhearn
Multiplex Developments
Australia Pty Ltd
Stephen Munnings
Donald J Munro, AM
Ian Munro ★
Douglas RM Murphy
Jan Murphy
Dr Miles Murphy (dec'd)
Ruth Murphy (dec'd)
Clive Murray-White ★
Dr John Musgrave (dec'd)
Lee Mylne ★
Steven Napier
Dr Leslie K Nathanson
Dr Robert C Needham
Dr Graeme H Neilson
Caroline Nelson
Nettleton Tribe
Newcrest Mining Limited
D Newman
Chris Newton
Dr Angelo Nicholas
Barbara Nicholls
Maris Nichols
Catherine M Nicholson
Iris I Nicolaides, OAM
Dr Nicholas J Nicolaides, AM
Janice Noble
P John Noble
Verity E Noble
Angus Norrie
Lyle G Norris
Margaret North (dec'd)
Mary Lynnette North
Sir John Nosworthy, CBE (dec'd)
Dr Michelle J Nottage
Alison Nurcombe
Professor Barry Nurcombe
Bill Nuttall
William G Nutting
Dr John A Nye, RFD, ED
Joseph W O'Brien
Mike O'Brien
Moyia O'Brien
Suzanne O'Connell Gallery
David Anthony O'Connor
Dr John F O'Duffy
Anthony Ogden
Shay O'Hara Smith

- Dr Peter Michael O'Hare
 Mary-Loiuse O'Loan ★
 Justin and Jenny O'Neill
 Hiroshi Onji
 Alex S Orford
 Helen E O'Rourke (dec'd)
 Dr Michael GE O'Rourke
 Dr Nicholas O'Rourke
 Dr Dennis R Osborne
 Margot Osborne
 Leanne J O'Shea
 Dr Michael O'Shea
 Dr Robert F O'Shea (dec'd)
 Hidenori Ota
 Linfaye P Padman
 William A Palmer
 Emanuel Papas
 Marietta Papas ★
 Stephen G Papas
 Jennifer Parer
 Judith Parker
 Parmalat Australia Ltd
 Jacqueline H Passmore-Bennett
 Dr John M Paterson
 Patricia Paterson
 Ronald D Paul, AM
 Dr Stuart P Pegg, AM
 Nick Penklis
 Pepito Childrenswear Pty Ltd
 Deborah Peralta
 Perpetual Trustees Queensland
 Ltd as Trustee Estate James
 Simpson Love
 Ian Perry (dec'd)
 Leah A Perry
 Michael S Perry
 Patricia Mae Perry
 Neisha Peters
 Sandra Peyrolle
 Prudence Pharey ★
 The Hon. Justice Anthe
 Philippides
 E Dianne Phillips ★
 Max Phillips
 Veronica Phillips
 Geoffrey W Pie
 Sharon J Pie
 Dr LJ Pigott
 Lorna Pirie
 Dr David Platts ★
 Vessa Playfair
 Sue Poggioli
 Dr Errol J Pollard
 Heather Pollock
 James Pollock, AM
 Elizabeth Porter
 Simon Porter
- A Gordon Postle (dec'd)
 Alexander J Poulos
 Marie Poutsma ★
 Dr Kerry-Anne Powell
 Professor Lawrie W Powell, AC
 Margaret Prentice ★
 John Preston ★
 Katherine Preston
 Margaret Price
 Dr David A Pritchard
 Jan Psaltis
 Susan Fay Purdon-Sully
 Carolyn Pyle
 Dr John Pyle
 QANTEC McWILLIAM Consulting
 Engineers
 Nerida Quatermass
 Paul Quatermass
 Dr Patricia A Quayle
 Alison Quinn
 Dr John M Quinn
 Anthony J Rafter
 Margaret Raptis
 Cheryl J Rayfield
 Michael Rayner
 Mark Ready
 Dr Jill Reddan
 Raquel Redmond
 Barrett Reid, AM (dec'd)
 Dr Ralph Reid
 Repco Limited
 Barbara Reveleigh
 Dr Edward F Reye
 Dr Albert Reaburn Reynolds
 Dr Graham I Rice
 Wendy J Richardson
 W Ronald J Riddel, AM, OBE (dec'd)
 Dr Edward W Ringrose
 Jan Ringrose
 Rio Tinto Coal Australia Pty Ltd
 Ann-Margaret Ritchie
 Ann-Maree Roberts
 Greg E Roberts
 Lady Roberts
 Natasha Roberts
 Jennifer Robertson
 Joan O Robertson
 Dr PR Robertson
 Dr Michael F Robinson
 Jennifer Rogers
 Barrie M Rollason
 Leona N Romaniuk
 Dr Anthony F Rotondo
 Marcia Rouen ★
 A Rhyl Row
 Dr Christine H Rowland
 Jennifer E Rowland
- Dr Andrew D Russell
 Pamela Sachs
 Dr Noel S Saines
 Marjorie C Saint-Smith
 Dr Charles Salantri
 Deborah Sandford
 David Sartor
 Dr Kay E Saunders, AM
 Sir Ernest Savage
 Peter and Gail Sawyer
 Dr Stuart J Scherhag
 Paul Schofield
 Dr Frederick Schubert
 Winifred Schubert
 Marjorie Schumacher
 Alan Scott ★
 Hugh A Scott-Mackenzie
 Sealy of Australia
 Judge George Seaman (dec'd)
 Dr Roslyn A Seeney
 Julie A Seidel
 Seymour Group Pty Ltd
 Janiece A Seymour
 Mary P Seymour
 Raelene Shand ★
 Shand Taylor Lawyers
 Sir Frank Sharpe, CMG, OBE, ED
 (dec'd)
 Janet M Shaw
 John C Sheahan, SC
 Professor Peter Sheehan, AO
 Dr Gene Sherman
 Norman C Shrubsole
 Sue Simon
 Helen Sinclair ★
 Dr Vagish Singh
 Dr Simon Siu
 Darlene A Skennar
 Dr Michael Slancar ★
 Dr Gregory J Slater
 Beverley Smith
 Eleanor Smith
 Camille Smith-Watkins ★
 Dr B Smithurst
 Sofitel Brisbane
 Jeune Son ★
 Song Dong
 Allan Spargo
 Darian C Spence
 Margaret E Spilsbury
 Howard L Stack
 Wayne J Stafford
 Guy D Standen
 Michael J Standish
 Dr Charles J Steadman
 Jenny Steadman
 Peter J Steele
- Amanda Stein
 Professor Margaret A Steinberg, AM
 Patience M Stevens
 Pauline Stevens
 Neville W Stitt (dec'd)
 Katharine A Stodart
 Betsy Stoltz
 Ruth A Stoneley (dec'd)
 A John Stratigos, CBE (dec'd)
 Iris G Stratigos
 Susan Stratigos Wilson
 Dr Edward R Street
 Chrissie Streitberg
 Dr Gordon G Stuart
 Stubbies Clothing Company
 Margaree Sullivan ★
 Mr Tom Sullivan
 Terry Summers
 Jennifer Summerson
 Suncorp
 Jennifer M Sutherland
 Dr Bridget Sutton ★
 Symbion Health Limited
 Stuart P Tait
 Brian T Tan
 Eiichi Tanaka
 Warren Tapp
 Professor Jennifer Taylor
 Elizabeth J Teeland
 Dr John YH Teh, AM
 MNF Temple
 David C Tennent (dec'd)
 Dr W Terry ★
 Margaret Theile
 THG Resource Strategists
 Sir Leslie Thiess, CBE (dec'd)
 Dr Albert T Thomason
 Sheila J Thomason (dec'd)
 Jane E Thompson
 Maureen Thompson
 Dr Shane A Thompson
 Dr David H Thomson
 Dr Monica E Thomson
 Judith R Thomson
 Len Thornquist ★
 Dr Geoffrey R Tilse
 Peter W Tobin
 Christine Tod
 Dr Marcus A Tod
 Viviane Tolliday
 Mary M Tooma
 John B Torrance
 Beverley Tracey
 Dr Jocelyn H Tranberg
 Douglas M Traves, OBE
 Roger N Traves
 Melanie L Trebilcock

Rebecca M Treston
 Gem Trotter, OAM
 John Gerald Trude (dec'd)
 Carolyn Twyman
 Juelle Tymms
 Barbara F Tynan
 Judith Tynan ★
 Dr Michael W Uhr
 Dr Anne Ulcoq
 Dr David B Ulyatt
 The Hon. Justice Peter Underhill, OBE
 Robin Unger ★
 Coralie van Straaten-Peretz
 Fay E Venus
 Geoffrey W Voller
 Dr M Beryl Wagner (dec'd)
 Dr Neal I Walker
 Norma June Walker
 Stella R Walker
 Rick (JCF) Walkom
 Janet Waller
 Dr John P Waller, AM
 Michael Walsh
 Diana McLelland Warby
 Dr Frances M Ware
 Yvette Wareham
 John S Warner
 Sally Warriner
 Jacki Waters
 Douglas C Watkins (dec'd)
 May Watkins
 Janice I Watson
 Janine I Watson
 Patricia Watson ★
 Marie A Watson Blake, AM (dec'd)
 Dr Bryan Watson-Brown
 Helen M Watt
 James R Webb
 Professor L Roy Webb, AO
 Julie L Webster
 Rose Marie Webster
 Professor Malcolm J West
 Margaret A West
 The Hon. Claude A Wharton, CMG
 Dr Nikki J Whelan
 Fay M Whitbread
 The Hon. Justice Margaret White
 Dr Michael WD White, OC
 Rhonda White ★
 Dr Robert W Whiting
 Desmond R Whybird
 Barbara A Wickes
 Rex Wickes
 Hannah Wilkey
 Dr Ian S Wilkey
 Maureen Wille
 Emeritus Professor Frederick J
 Willett, AO, DSC (dec'd)
 Dorothy M Williams
 Judith A Williams
 Karen Williams
 Kellie Williams
 Michael C Williams
 Sir Sydney Williams, OBE (dec'd)
 Sydney John Williams
 Dr Judith Williamson ★
 Dr Margaret M Williamson
 Dr Charles R Wilson
 Leonie R Wilson
 Pamela Wilson
 Steven M Wilson
 Glenda A Winders
 Samuel Winston Smith
 Stuart Woodley ★
 Professor Peter WH Woodruff
 Jack Woods, ISO
 Matt Wordsworth ★
 Tessa M Worthington
 Audrey Wright
 Simon P Wright ★
 Rodney M Wylie, OBE
 Yang Hon-pon ★
 Dr Anusch Yazdani ★
 Liên Yeomans
 Mark Young ★
 Rosemary Yule

Donors

As at 30 June 2008

Sir Albert Abbott, *CBE*
 Henry Adcock
 Bill A Ahern
 Brigadier JL Amies, *CBE, ED (RL)*
 (dec'd)
 Mr and Mrs Derek Andrew
 Ansett Airlines of Australia
 Armaguard
 Barbra Ashby
 Austral Group Limited
 Australian Guarantee Corporation
 Limited
 Bernard Avery
 Joanna Baevski
 Joanna D Baillieu
 Barclays Bank Australia Limited
 Melissa Barnett
 Eve Barry
 Paul T Barry (dec'd)
 Sir Charles Barton, *OBE, ED* (dec'd)
 Lady Barton (dec'd)
 Arthur Bassingthwaighte, *AO*
 (dec'd)
 Peter J Baston
 John D Batch, *SC*
 Nicole M Beasley
 Martin Beaux
 GE Behne
 Adeline G Bell (dec'd) in memory
 of Pamela North Bell, *OAM*
 AJ Benfer
 Justice Patricia A Bergin
 Phillip & Maree Biddle
 Beringer Blass Wine Estates
 Besser (Queensland) Limited
 Binney and Smith
 OM Black
 Susan Blake
 Milly & Robert Blakeley
 William H Blakemore
 Karen A Brady
 Dr Michael Brand
 Paul A Brannelly
 Brett and Company Limited
 John Bridgen
 Patricia A Bromley-Marks
 Pamela Brown
 BBS Public Relations
 CJ Buchanan
 John Buckby
 Elizabeth Burge
 R Burkholder
 Kenneth J Burley
 Alastair G Burns
 June Callander (dec'd)
 Fiona MR Callinan
 Ian Cameron

Campbell Brothers Limited
 Donna Campbell
 The Hon. Fred A Campbell (dec'd)
 Mr and Mrs J Campbell
 Graham Campbell-Ryder
 Timothy M Capes
 Margaret Carnegie
 Cartier Boutique Surfers Paradise
 Wallace Caruana
 J and MM Cater-Summerville
 Caxton Street Catering
 Fay Chalmers
 William H and Di Chapman
 Janet Chisholm
 Andrew Clark and Sarah Tiffin
 Paul J Clauson
 Alison Nettleton Coaldrake
 Tina LC Cockburn
 Helen Collins
 Spero Conias
 John B Conlan
 Conrad & Gargett Pty Ltd
 Conrad Treasury
 Roy C Cooper, *CBE* (dec'd)
 C Jane Corbould
 Les J Cotton in memory of Sir
 David Longland, *CMG, LLD*
 Lindsay F Cribb
 Mr and Mrs TJ Crockett
 Jeanne Cross
 Ray & June Crooke
 Mr and Mrs NA Curtis
 Dalton Fine Paper
 Jeannette Dam-Hansen
 DAS Distribution
 Emeritus Professor GN Davies, *CBE*
 Valerie Davies
 Dr Lois Davis
 Win Davson, *MBE* in memory of Sir
 David Longland, *CMG, LLD*
 Bernard J Dawson (dec'd)
 Joy DeGruchy
 Dentsu Australia Limited
 V Di Marco & Company Pty Ltd
 Patrick Dixon
 Lesbia Dobson
 Robin E Dods
 Leonard W Doggett, *OBE*
 Doris Donald
 Sir Sholto Douglas (dec'd)
 Marion Dowling
 Dean A Dransfield
 The Hon. Mr Justice Douglas
 Drummond
 Simon J Dyer
 Eagers Holdings Limited
 Edwards Dunlop Paper

Dr Murray W Elliott, *AO, ED*
 Evans Deakin Industries Limited
 Flora Evans
 Anthony P Eviston
 Julie Ewington
 Irma Falkiner
 Dr Thomas M Ferrier
 Trevor Findlay
 Ken C Fleming, *OC*
 The Hon. Sir Alan Fletcher (dec'd)
 Dr Judith H Foote
 Ken J Foots
 Dr Tim DC Forster
 Foster's Group Limited
 Reg & Helen Fountain
 Mr JG Fox
 French Quarter Resort
 Andrea R Frendo
 Mrs CE Friend
 Major George Friend
 Mr and Mrs GI Frost
 Robert L and Glen-Marie Frost
 Sarah L Gallie
 Janette A Gamer
 George Weston Foods Ltd
 James Gibson
 Global Banking and Securities
 Transactions
 Dr Robert M Goodwin
 Laurence P Gormley
 Neil M Gow, *CMG*
 Denise Green
 Dr Susan Griffiths
 Robert Grubb
 Robert KR Haines
 Dr M Wendy Harley
 LGM & EK Harris
 Dr Michael W Harrison
 Sir Byrne Hart, *CBE, MC* (dec'd)
 Edna Hart
 Ray and Joyce Hartland (dec'd)
 in memory of Sir David
 Longland, *CMG, LLD*
 Douglas F Hawthorne
 Takashi Hayashi
 Michael J Hayne
 Myrtle Head
 Peter Henderson
 Graeme Herring
 Sir Justin Hickey
 Sir Leo Hielscher
 Margaret Hill
 Winifred M Hilliard
 Hilton International Hotel,
 Brisbane
 Mr and Mrs Bill Hind
 Russell J Hinze (dec'd)

Margaret Hockey (dec'd) in
 memory of Robert and Beryl
 Persse
 Kim Hodges
 Sir John Holland, *AC*
 AJ & BE Hope
 Hunt Leather
 Hyne & Son Pty Ltd
 Louise Isackson
 Jennings Industries Limited
 John Holland Group Pty Limited
 Rita-Anne Johnson
 Claire Jolliffe
 Jill M Jones
 Jonah Jones
 ML Jones
 Verlie Just, *OAM* (dec'd)
 Noelle Karez
 Helen M Keays (dec'd)
 Lyndal B Kennedy
 David T Kenney and Helen Kenney
 Helen F Kenny (dec'd)
 Ian Kenny
 Ruth S Kerr
 Richard G Kimber
 Jan Kirkman
 Clive Kitchen
 Marilyn Koerner
 David J Lambert, *OBE* (dec'd)
 Bruce R Lawford
 Susan Learmonth
 James GR Legat
 Leica Microsystems
 Ann Lewis
 Lismore High School
 Bruce Littleboy
 Mr and Mrs JP Love
 The Hon. GAG Lucas, *AC, OC*
 Ada Ludlow
 Arthur F Luya, *CBE* (dec'd)
 Ruth Mackinnon
 Dr Angela Magee
 Mary Magee
 Stephanie Manger
 Ida I Martin (dec'd)
 Joan Martin
 Colina M Mason
 Ian J Matheson in memory of Sir
 David Longland, *CMG, LLD*
 Neil S Matthews
 Mr and Mrs Monty Maughan
 Dr Margaret McAdam
 Mr AJ McCarthy in memory of the
 late Mrs Dorothy Gordon
 Keith McConnell and Penelope
 Jaffray
 Sir Lionel McCray (dec'd)

Lady McCray (dec'd)
 James McCrea
 Jocelyn McKenzie
 Peter A McLaughlin
 Glenda M McMahan
 Dr Peter J McMeniman
 W Dan McVay
 Professor and Dr JVS Megaw
 Mr and Mrs J Menzies in memory
 of Sir David Longland, CMG, LLd
 Metro Global Pty Ltd
 Ann M Mills
 Mitchell Ogilvie Menswear
 Paul Molyneux
 Moreton Hire
 Dr David AF Morgan
 Robin Murdoch
 Edward D Murray, MC
 Dr John F Murray
 Brendan Nasser
 Allan C Neil
 Mr and Mrs S Nicholls in memory
 of Sir David Longland, CMG, LLd
 Patrick Nolan
 Noosa Blue Resort
 North Australian Cement Limited
 Brian O'Donnell, QC
 Patrick Ogilvie
 Molly O'Loan
 Ord Minnett Limited
 William E Orford
 Organ Historical Trust of Australia ★
 Oriel Gallery
 Lester T Padman, OBE
 Nancy Paterson
 The Pen Shoppe Pty Ltd
 Ailsa Persse
 AE Peterson
 HE Peterson, CBE
 Diane Pherous
 Anthony D Pie
 Michael Platsis
 Lynda L Porter
 Dr Roger L Prentice
 Mr J and Mrs OE Pursiheimo
 Tom W Pursiheimo
 Pollie Pyke
 Qantas Airways Limited
 QBE Insurance Group Limited
 Dr Peter Quartermaine
 Queensland Cane Growers'
 Council
 Queensland Cricket
 Queensland Rubber Company
 Pty Ltd
 The Hon. Dame Annabelle
 Rankin, DBE (dec'd)

Jean Rankin
 Con Raptis
 John B Reid, AO
 Restaurant Two
 FE Rimington
 G and R Rinaudo
 Robert White Jeweller Pty Ltd
 NB Roberts
 M Françoise Robertson
 Patrick Robertson
 Dr Lorraine M Robinson
 Nadia Jill Roe
 AE de Norbury Rogers
 Lorraine D Romeril-Smith
 Philip M Rouse
 Royal Albert Apartment Hotel
 The Most Reverend FR Rush, DD
 (dec'd)
 Garrett and Jan Russell
 Hilary M Russell (dec'd)
 Ian M Russell, AO, OBE
 Doug T Ryan
 PN Sacre
 Geoffrey D Sakzewski
 Gary W Sands
 Dorothy Savage
 Mr JR Savage
 Lady Schubert
 Helen Sethna
 William J Sexton
 Selwyn HW Shand
 MF Shaw
 The Hon. Mr Justice CD
 Sheahan (dec'd)
 John Shostrom
 SNAFU
 Janet Solly (dec'd)
 Lynne Somerville
 Sony Australia
 Michael J Sparksman
 Ian A Staib
 Alison P Stenmark
 Mark W Stockwell
 Mr JS Stodart
 Ian M Suter, OBE
 Jess A Suthers
 The Hon. Sir Reginald Swartz, KBE, ED
 Brian J Sweeney, CMG (dec'd)
 Pamela J Sweetapple
 Swift & Moore Pty Ltd
 V Greg Swindon
 Alvin K Swisher
 Alec and Hui Thatcher
 Tisane Tearoom ★
 Maxine R Tod
 Samantha J Traves
 Treetops Seaview Montville

John M Tully
 Iain Turnbull
 Mary Turner, OAM
 Catrina Udy
 Angelo Vasta
 Sir James Walker, MBE
 Walter Construction Group Ltd
 Dr David W Walters
 The Hon. Sir Charles Wanstall
 The Hon. John H Warner (dec'd)
 John N Weaver
 Dr Elizabeth R Webster
 L Joan Webster (dec'd)
 Margie KC West
 Margaret Ann White
 Rosemary White
 Terry A White
 Emeritus Professor Frederick J
 Willett, AO, DSC (dec'd) in memory
 of Sir David Longland, CMG, LLd
 The Hon. Sir Edward Williams,
 KCMG, KBE (dec'd)
 Colleen Wilson
 Jenepher Wilson
 Margaret Wilson
 Peter M Wood
 Shirley Woodhead in memory of
 John Woodhead
 Jane Zeat
 Jetty Zigas in honour of Mr and
 Mrs Kie Toan Seng
 Jetty Zigas in honour of Hatiku
 Zigas
 Paul Zika



Eugene von Guérard

Austria/Australia 1811-1901

A view from Daylesford towards the Pyrenees c.1864

Oil on canvas / 35.5 x 63.8cm / Purchased 2008 with funds from Philip Bacon, AM, through the Queensland Art Gallery Foundation

Collection Acquisitions

Donors

Donations and gifts through the Queensland Art Gallery Foundation

Philip Bacon, AM
 Jill Barker
 Michael Simcha Baevski
 Henry and Amanda Bartlett Trust
 Stephen Bush
 Bequest of Margaret Cilento
 Patrick Corrigan, AM
 Jim Cousins, AO, and Libby Cousins
 Bequest of Grace Davies and Nell Davies
 Robyn Daw
 eX de Medici
 Robert and Jennifer Dickerson
 Lauraine Diggins
 Estate of Jessica Ellis
 Charles and Cornelia Goode
 Margaret Greenidge
 Katharina Grosse
 Nicholas Jose and Claire Roberts
 Dr Elaine Katte
 Estate of Lawrence F King
 Phillip and Barbara McConnell
 Cameron McTavish
 Macquarie Bank Foundation
 Naomi Milgrom
 Clive Murray-White
 Timothy North and Denise Cuthbert
 William Nuttall and Annette Reeves
 Queensland Art Gallery Foundation Appeal
 Rio Tinto Aluminium
 James C Sourris
 Estate of Vincent Stack
 Thornquest Investments
 Wilbow Pty Ltd
 Bruce Wolfe
 Xstrata Coal
 Xstrata Community Partnership Program

Cultural Gifts Program

Jill Barker
 Stephen Bush
 Patrick Corrigan, AM
 Jim Cousins, AO, and Libby Cousins
 Robyn Daw
 eX de Medici
 Robert and Jennifer Dickerson
 Lauraine Diggins
 Charles Goode
 Nicholas Jose and Claire Roberts
 Cameron McTavish
 Naomi Milgrom
 Timothy North and Denise Cuthbert
 William Nuttall and Annette Reeves
 Thornquest Investments
 Wilbow Pty Ltd

Gifts, Bequests, Purchases

ADAMS, Lisa

Australia b.1969

Rose garden 2008

Oil on canvas / 70 x 53.6cm /

Purchased 2008 with funds from Xstrata Community Partnership Program through the Queensland Art Gallery Foundation

AH XIAN

China/Australia b.1960

Heavy wounds series no. 10 1991

Oil on canvas / 110 x 90cm

(Disembodied hand, bandaged in lower register) 1993

Synthetic polymer paint, ink, oil on wooden board / 50 x 40.5 x 2cm / Acc.

2008.072-073 / Gift of Nicholas Jose and Claire Roberts through the Queensland Art Gallery Foundation 2008

AIHI, Marie Taita

Papua New Guinea

b.(c.)1953

Untitled (Three figures, black and white) 1969

Screenprint, ed. 19/50 / 49.6 x 62.4cm (comp.)

Untitled (Two creatures) 1969

Screenprint, ed. 26/40 / 76.4 x 50.8cm (comp.)

Untitled (Two creatures) 1969

Screenprint, ed. 28/40 / 76.4 x 50.8cm (comp.)

Untitled (Two creatures with person on red) 1969

Screenprint, ed. 45/53 / 50.6 x 69cm (comp.)

Untitled (Cat and bird) c.1969

Screenprint, ed. 33/50 / 50.8 x 76.3cm (comp.)

Untitled (Cat and bird) c.1969

Screenprint, ed. 35/50 / 50.8 x 76.3cm (comp.)

Untitled (Two creatures, blue background) c.1969

Screenprint, ed. 46/63 / 50.5 x 67cm (comp.) / Gift of Cameron McTavish through the Queensland Art Gallery Foundation 2008

BARKER, Jill

Australia b.1950

Faultlines 1996

Micro-pigment ink on paper / Three sheets: 459.5 x 115cm; 457 x 115cm; 460 x 115cm / Gift of the artist through the Queensland Art Gallery Foundation 2008

BAUL, Eddy

Vanuatu b.1981

Flying fox (from 'Bebellie' portfolio) 2007

Screenprint on Magnani paper, ed. 1/45 / 76 x 54cm (comp.) / Acc. 2008.095 / Purchased 2008. Queensland Art Gallery Foundation

BHANANI, Hariyaben

Utmabhai

India/Pakistan b.1958

Baghicho (garden) 2006–07

Wall hanging: hand blockprinted fabrics and appliqué on cotton ground / 120 x 165cm / Acc. 2007.259 / Purchased 2007. Queensland Art Gallery Foundation Grant

BINNS, Vivienne

Australia b.1940

Orange flam 1967

Oil on composition board / 70 x 92 x 10cm (irreg.) / Acc. 2007.303 / Purchased 2007 with funds derived from the Bequest of Grace Davies and Nell Davies through the Queensland Art Gallery Foundation

BRASSINGTON, Pat

Australia b.1942

Pond (series) 1995

Gelatin silver photograph, ed. of 1 / 12 sheets: 42 x 27.5cm (each comp. approx., sight) / Acc. 2007.168.001-012

Untitled (from 'Cambridge Road' series) 2007

Pigment print on paper, ed. 2/8 / One sheet: 32.6 x 45.1cm (comp.); five sheets: 45.1 x 23.4cm (each comp. approx.); one sheet: 45 x 32.4cm (comp.) / Acc. 2007.169-175 / Purchased 2007. Queensland Art Gallery Foundation

BUNNY, Rupert

Australia/France

1864–1947

Festival revelry (Classical scene) c.1921–22

Monotype / 34.3 x 24.2cm (comp.) / Acc. 2007.165 / Purchased 2007 with the assistance of Philip Bacon, AM, through the Queensland Art Gallery Foundation

BUSH, Stephen

Australia b.1958

Bait 2000

Oil on MDF board / 145 x 185.5 x 39.7cm

Seed 2000

Oil on MDF board / 144.5 x 183.1 x 39.8cm / Gift of the artist through the Queensland Art Gallery Foundation 2008

BUSTARD, William

England/Australia

1894–1973

Castle Hill, Townsville, from the North Shore 1945

Watercolour / 37 x 51cm / Acc. 2007.190 / Purchased 2007. Queensland Art Gallery Foundation

CASEY, Karen

Australia b.1956

Ngaantjatjarra people

The record keepers (from 'Duyfken' portfolio) 2006

Photo-lithograph, ed. 12/50 / 40 x 54cm (comp.) / Acc. 2007.207.001 / Gift of Rio Tinto Aluminium through the Queensland Art Gallery Foundation 2007

CHAPMAN, Jake & Dinos

(Jake CHAPMAN b.1966 and

Dinos CHAPMAN b.1962) England

Etchasketchathon (series) 2005

Etching on 300gsm Somerset TP paper, ed. 9/35 / 31 sheets: various dimensions / Purchased 2008. Queensland Art Gallery Foundation Appeal

CILENTO, Margaret

Australia 1923–2006

Old boatshed, West End,

Brisbane 1946

Oil on board / 72.7 x 101cm (sight)

Sketchbook (animals) 1947–49

Sketchbook of 18 leaves: 30.5 x 23.3 x 0.7cm

Sketchbook (figure and head studies) 1978

Sketchbook of 76 leaves: 29.7 x 21.8 x 1.2cm

Sketchbook (babies) 1947–48

Sketchbook of 11 leaves: 43.4 x 35.2 x 1cm / Acc. 2007.187, 2008.014-016 / Bequest of Margaret Cilento through the Queensland Art Gallery Foundation 2008

CLARK, Tony

Australia b.1954

Putto David 2008

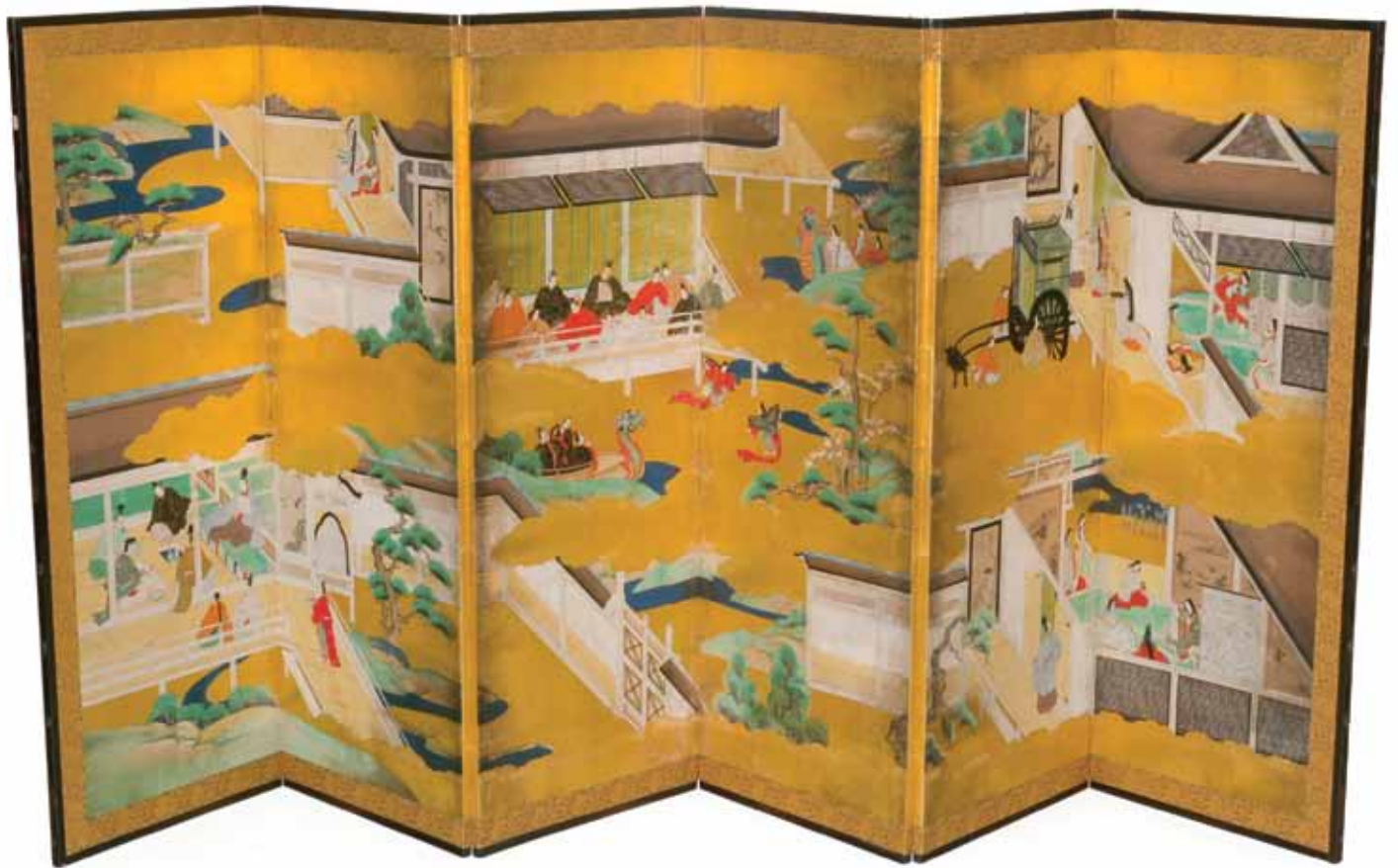
Synthetic polymer paint and permanent marker on canvas / 396.5 x 182.5cm / Purchased 2008 with funds from the Estate of Lawrence F King in memory of the late Mr and Mrs SW King through the Queensland Art Gallery Foundation and the Queensland Government's Gallery of Modern Art Acquisitions Fund

COOKE, Nigel

United Kingdom b.1973

To work is to play 2008

Oil on canvas / 220 x 370.5cm / Purchased 2008 with funds from the Estate of Lawrence F King in memory of the late Mr and Mrs SW King through the Queensland Art Gallery Foundation



attrib. to Hasegawa School

Japan active late 17th century

Pair of six fold screens: Scenes from the Genji Monogatari (Tale of Genji)

(detail: left hand screen) late 17th century (Edo period)

Ink, gold and colours on paper on six-fold wooden framed screens / 122 x 276cm

(right hand screen); 119.8 x 275.7cm (left hand screen) / Purchased 2007 with

funds from the Henry and Amanda Bartlett Trust through the Queensland Art Gallery Foundation.

COTTON, Olive

Australia 1911–2003

Glasses 1937, printed 1999
Gelatin silver photograph, ed.
6/90 / 25.7 x 19cm**Max after surfing** 1939, printed 1999Gelatin silver photograph,
ed. 4/90 / 25.3 x 19cm / Acc.
2007.236–237 / Purchased 2007.
Queensland Art Gallery
Foundation**CURRIE NALINGU, Joanne**

Australia b.1964

Gunggari people

Maranoa River: Life lines 2006Synthetic polymer paint on
canvas / Three panels: 210 x
160cm (overall) /
Acc. 2007.247a–c / Purchased
2007. Queensland Art Gallery
Foundation**DANGAR, Anne**

Australia/France 1885–1951

La Vierge et l'enfant Jésus 1934Glazed earthenware / 56.8 x
35 x 1.5cm / Acc. 2007.191 /
Purchased 2007. Queensland Art
Gallery Foundation Grant**de MEDICI, eX**

Australia b.1959

United spectres #3 2005–06Etching, printed in black ink, from
six plates / Three sheets: 119.6 x
121.6cm (comp. overall) / Gift of
the artist through the Queensland
Art Gallery Foundation 2008**DICKERSON, Robert**

Australia b.1924

Coolum Beach 1974Oil and enamel on Swedish
hardboard / 183 x 244cm /
Gift of Robert and Jennifer
Dickerson through the
Queensland Art Gallery
Foundation 2008**DUPAIN, Max**

Australia 1911–92

(Solarised hands and flowers)
c.1934Gelatin silver photograph /
37.5 x 27cm (comp., sight)**(Solarised lily)** c.1934 / Gelatin
silver photograph / 37 x 30cm
(comp., sight) /
Acc. 2007.234–235 / Purchased
2007. Queensland Art Gallery
Foundation**FAIRWEATHER, Ian**

Scotland/Australia 1891–1974

(Snake charmer) c.1949Gouache, ink and watercolour /
21.5 x 17.5cm (sight) / Acc.
2007.166 / Purchased 2007.
Queensland Art Gallery
Foundation**FRIEND, Donald**

Australia 1915–89

A Brisbane bedroom 1944Watercolour, pen, ink and
gouache / 64 x 48cm / Acc.
2007.218 / Purchased 2007 with
the assistance of Philip Bacon,
AM, Dr Elaine Katte and Bruce
Wolfe through the Queensland
Art Gallery Foundation and the
Queensland Art Gallery
Foundation Grant**FRIEND, Ian**

Australia b.1951

Metaphysics set 1, no. 3 1997Indian ink, gouache and coloured
crayons on Lana paper / Diptych:
76 x 112cm (comp. overall)**Metaphysics set 1, no. 4** 1997Indian ink, gouache and coloured
crayons on Lana paper / Diptych:
76 x 112cm (comp. overall)**Metaphysics set 1, no. 5** 1997Indian ink, gouache and coloured
crayons on Lana paper / Diptych:
76 x 112cm (comp. overall) /
Gift of Robyn Daw through
the Queensland Art Gallery
Foundation 2008**FRISTRÖM, Oscar**

Sweden/Australia 1856–1917

**(Redcliffe Jetty and Sutton's
Beach)** 1899

Oil on board / 24 x 63cm

(View of Scarborough) 1899 /
Oil on board / 23.5 x 62.2cm /
Acc. 2007.231–232 / Purchased
2007. Queensland Art Gallery
Foundation**FULLARD, Corrie**

Australia b.1931

Palawa people

**Traditional Palawa shell
necklace** 2007Large golden star and blue
maireener shells collected from
Flinders Island, threaded with
synthetic thread / 168 x 1.5cm**Traditional Palawa shell
necklace** 2006Large golden star shells collected
from Flinders Island, threaded
with synthetic thread / 170 x
1.5cm / Acc. 2007.203–204 /
Purchased 2007. Queensland Art
Gallery Foundation**GABORI, Sally**

Australia b.(c.)1924

Kaiadilt people

Dibirdibi Country – Topway 2006Synthetic polymer paint on linen /
151 x 101cm**Dibirdibi Country** 2007Synthetic polymer paint
on linen / 192 x 101cm /
Purchased 2008. Queensland Art
Gallery Foundation Grant**GREENO, Lola**

Australia b.1946

Palawa people

Green maireener necklace 2007Green maireener shells, threaded
with double strength quilting
thread / 180 x 1.5cm / Acc.
2008.087 / Purchased 2008.
Queensland Art Gallery
Foundation Grant**GRIEVES, Genevieve**

Australia b.1976

Worimi people

Picturing the old people 2006–07Five-channel video installation
(Mini DV format): 12:55 minutes,
colour, sound, ed. 1/3 /
Dimensions variable /Acc. 2007.224a–f / The Xstrata
Coal Emerging Indigenous Art
Award 2007 (winning entry).
Purchased 2007 with funds
from Xstrata Coal through
the Queensland Art Gallery
Foundation**GROSSE, Katharina**

Germany b.1961

Untitled 2007Synthetic polymer paint on wood
on polysterene and resin /
130 x 130 x 50cm / Acc. 2007.189 /
Gift of the artist through
the Queensland Art Gallery
Foundation 2007**GUAN Wei**

China/Australia b.1957

Yellow fruit 1991Synthetic polymer paint on
canvas / 86.5 x 46cm**Wo yu (Kneeling fish)** 1986Synthetic polymer paint on
canvas / 86.5 x 46cm**The last judgement** 1995Lithograph, AP 7/7 /
64 x 130cm (framed)**The last supper** 1995Lithograph, AP 7/7 / 64 x 130cm
(framed) / Acc. 2008.074–077 /
Gift of Nicholas Jose and Claire
Roberts through the Queensland
Art Gallery Foundation 2008**GYATSO, Gonkar**

Tibet/United Kingdom b.1961

Angel 2007Stickers and pencil on treated
paper / 152.5 x 122cm / Acc.
2008.041 / The Kenneth and
Yasuko Myer Collection of
Contemporary Asian Art.
Purchased 2008 with funds from
Michael Simcha Baevski through
the Queensland Art Gallery
Foundation

HAMIR, Kankuben

India b.1978

***Rabari appliqué and embroidered quilt* 2004**

Quilt: hand-stitched embroidery and appliqué in silk, mashru (hand-woven satin silk fabric) and cotton on mashru ground / 143 x 232cm / Acc. 2007.262 / Purchased 2007. Queensland Art Gallery Foundation Grant

HAPE

Papua New Guinea

***Orokolo 2* 1968**

Screenprint, ed. 24/47 / 53.5 x 82.2cm (comp.)

***Orokolo* 1968**

Screenprint, ed. 10/35 / 52 x 81.3cm (comp.) / Gift of Cameron McTavish through the Queensland Art Gallery Foundation 2008

attrib. to HASEGAWA SCHOOL

Japan active late 17th century

***Pair of six fold screens: Scenes from the Genji Monogatari (Tale of Genji)* late 17th century**

(Edo period)
Ink, gold and colours on paper on six-fold wooden framed screens / 122 x 276cm (right hand screen); 119.8 x 275.7cm (left hand screen) / Acc. 2007.225a–b / Purchased 2007 with funds from the Henry and Amanda Bartlett Trust through the Queensland Art Gallery Foundation

HENSON, Bill

Australia b.1955

***Untitled* 2000–01**

Type C photograph, ed. 4/5 / 104.3 x 153.8cm (comp.)

***Untitled* 1998–99**

Type C photograph, ed. 4/5 / 104.4 x 153.3cm (comp.)
Acc. 2007.176–177 / The James C Sourris Collection. Purchased 2007 with funds from James C Sourris through the Queensland Art Gallery Foundation

HOOPER, Julian

New Zealand b.1966

***Liliu* 2007**

Watercolour and collage on paper / 38 works: various dimensions / Purchased 2008 with funds from the Estate of Lawrence F King in memory of the late Mr and Mrs SW King through the Queensland Art Gallery Foundation

INKAMALA, Clara (potter)

Australia b.1954

Arrernte (Aranda) people

HERMANSBURG POTTERS

(pottery workshop) Australia est. 1990

***Ntaria Garage* 2007**

Hand-built terracotta clay with incised white slip beneath clear glaze / 34 x 25cm (diam.) / Acc. 2007.289 / Purchased 2007. Queensland Art Gallery Foundation Grant

IYUNA, James

Australia b.1959

Kunwinjku people

***Namorrgon* 1992**

Natural pigments on bark / 240 x 94cm

Rarrk (clan design)

***(Burial pole)* 2007**

Wood (*Eucalyptus tetradonta*) with natural pigments / 249 x 24cm (diam.) (irreg.) / Acc. 2007.180–181 / The Xstrata Coal Indigenous Art Collection. Purchased 2007 with funds from Xstrata Coal through the Queensland Art Gallery Foundation

JAMES, Jeanette

Australia b.1952

Palawa people

***Traditional Palawa shell necklace* 2006**

Black crow and green maireener shells collected from Flinders Island, threaded with synthetic thread / 182 x 1.5cm

Traditional Palawa shell

***necklace* 2006**

Blue maireener, penguin and black crow shells collected from Flinders Island, threaded with synthetic thread / 180 x 1.5cm

***Trimanya* 2007**

Tasmanian echidna quills, hand-rolled flax fibre string with echidna claw clasp / 76cm (length, approx.) / Acc. 2008.205–206, 2008.088 / Purchased 2008. Queensland Art Gallery Foundation

KALO, Saires

Vanuatu b.1983

Mataso kavaman

Kavaman

Sep sep

(from 'Bebellic' portfolio) 2007
Screenprint on Magnani paper, ed. 1/45 / Three sheets: 76 x 54cm (comp., each) / Acc. 2008.090–092 / Purchased 2008. Queensland Art Gallery Foundation

KAPOOR, Anish

England b.1954

***Untitled* 2006–07**

Resin fibreglass and lacquer / 500cm (diam.) x 555cm (installed) / Acc. 2007.284 / Commissioned 2006 with funds from the Queensland Art Gallery Foundation in recognition of the contribution to the Gallery by Doug Hall, AM (Director 1987–2007)

KAUAGE, Mathias

Papua New Guinea

1944–2003

***Barrasut man (Parachutist)* 1977**

Screenprint, ed. 42/123 / 72 x 53cm (comp., sight) / Gift of Cameron McTavish through the Queensland Art Gallery Foundation 2008

KAZIM, Ali

Pakistan b.1979

***Local circus I* 2007**

Pigments on wasli paper / 51 x 76cm

***Local circus III* 2007**

Pigments on wasli paper / 76 x 51cm

***Trance II* 2007**

Pigments and pressure printing on wasli paper / 76 x 51cm

***Adolescence II* 2007**

Pigments on wasli paper / 51 x 76cm / Acc. 2007.291–294 / Purchased 2007. Queensland Art Gallery Foundation Grant

KEME, Nerry

Papua New Guinea b.1975

***Obohutaigué & Dahorué (Tree bark and Omie mountains)* 2006**

Natural pigments on barkcloth / 167 x 134cm / Acc. 2007.213 / Purchased 2007. Queensland Art Gallery Foundation

KEMP, Roger

Australia 1908–87

***Developing sequence* 1963**

Synthetic polymer paint on board / 105 x 91cm / Acc. 2007.219 / Purchased 2007 with funds from the Estate of Vincent Stack through the Queensland Art Gallery Foundation

KOLIN, David

Vanuatu b.1983

***Butterfly* (from 'Bebellic' portfolio) 2007**

Screenprint on Magnani paper, ed. 1/45 / 76 x 54cm (comp.) / Acc. 2008.096 / Purchased 2008. Queensland Art Gallery Foundation

LA TOUANNE, Edmond

Bigot de

France active 1824–28

***Sommet de la Cataracte Bouganville, sur la route de Sidney à Bathurst dans les Montagnes Bleues* 1825**

Lithograph, hand-coloured / 19.5 x 26.5cm

Confluent de la Nepean et du Warangamba c.1828

Lithograph, hand-coloured / 20 x 28cm

Vue prise sur le cours de la rivière Nepean, au dessus de l'habitation de Mr Macarthur, dans le Camdenshire 1828

Lithograph, hand-coloured / 20 x 29cm / Acc. 2007.192-194 / Purchased 2007. Queensland Art Gallery Foundation

LIDDY, Peter

Australia b.1958

Old soles 2005**Hidden stairwell** 2005**Dust protection of escalators** 2006**Rothko** 2006

Type C photograph, ed. 1/2 / Four sheets: 80 x 80cm (comp., each) / Acc. 2007.296-299 / Purchased 2007. Queensland Art Gallery Foundation Grant

LIN Chunyan

China b.1962

(Two figures climbing a tree) 1985

Oil on linen / 82.2 x 76cm

Self portrait – Opening the door 1985

Oil on canvas / 88.8 x 89.8cm / Acc. 2008.078-079 / Gift of Nicholas Jose and Claire Roberts through the Queensland Art Gallery Foundation 2008

LITÉ, Herveline

Vanuatu b.1980

Le pigeon de Mataso(from 'Bebellie' portfolio) 2007
Screenprint on Magnani paper, ed. 1/45 / 76 x 54cm (comp.) / Acc. 2008.097 / Purchased 2008. Queensland Art Gallery Foundation**LIU Xiaodong**

China b.1963

Transvestite (Body no. 2) 2001

Oil on canvas / 151 x 136cm / Gift of Timothy North and Denise Cuthbert through the Queensland Art Gallery Foundation 2008

McCONNELL, Phillip

Australia b.1947

Spherical vase 1980s

Stoneware, wheelthrown, with numerous bands of coggle decoration picked out in white glaze / 37 x 29cm (diam.)

Large vase 1988

Stoneware, wheelthrown, with roundels at neck, coggle and incised decoration / 39 x 19cm (diam.)

Large vase 1980s

Stoneware, wheelthrown, and carved with foliate panels at the shoulder. Fired on shells / 35 x 20cm (diam.) / Acc. 2008.017-019 / Gift of Phillip and Barbara McConnell in memory of Dr Carl McConnell, OAM, through the Queensland Art Gallery Foundation 2008

McGILLICK, Tony

Australia 1941-92

Arbitrator 1968

Synthetic polymer paint on canvas / Four pieces: 287 x 406cm (overall) / Acc. 2007.220a-d / Purchased 2007 with funds from the Estate of Vincent Stack through the Queensland Art Gallery Foundation

McKENZIE, Queenie

Australia 1915-98

Kija (Gidja)/Nakarra people

Yoonoor Country 1998

Natural pigments on canvas / 60 x 80cm / Acc. 2007.230 / Gift of Jim Cousins, AO, and Libby Cousins through the Queensland Art Gallery Foundation 2007

MAAS, Willard

United States 1906-71

Andy Warhol's Silver Flotations(from 'Visions of Warhol' anthology 1963-90) 1966
Digital Betacam: 4 minutes, colour, sound / Acc. 2007.279.001 / Purchased 2007. Queensland Art Gallery Foundation**MANSELL, Allan**

Australia b.1957

I (from 'Duyfken' portfolio) 2006

Etching, ed. 12/50 / 60 x 45cm (comp.) / Acc. 2007.207.003 / Gift of Rio Tinto Aluminium through the Queensland Art Gallery Foundation 2007

MARIKA, Dhuwarrwarr

Australia b.(c.)1946

Rirratjingu people

The Macassan prahu (from 'Duyfken' portfolio) 2006

Linocut, ed. 12/50 / 40 x 60cm (comp.) / Acc. 2007.207.004 / Gift of Rio Tinto Aluminium through the Queensland Art Gallery Foundation 2007

Milngurr 2007

Natural pigments on bark / 70 x 46cm / Acc. 2007.252 / Purchased 2007. Queensland Art Gallery Foundation

MARIKA, Wanyubi

Australia b.1967

Rirratjingu people

Mumutthun (Paddle splash) 2006Natural pigments on bark (*Eucalyptus tetradonta*) / 150.9 x 60cm**Larrakitj, Mumutthun****(Paddle splash)** 2006

Wood with natural pigments 354 x 20cm (diam.) / Acc. 2007.255-256 / Purchased 2007. Queensland Art Gallery Foundation Grant

MARRNGAMARRNGA, Anniebell

Australia b.1968

Kuninjku people

Yawkyawk spirit (Pregnant with twins) 2007

Wood, pandanus palm leaf (loop stitched and wrapped), with natural pigments / 266 x 67 x 2cm / Acc. 2007.253 / Purchased 2007. Queensland Art Gallery Foundation

MARUMI, Vivian

Papua New Guinea b.1980

Odunege 4 (Jungle vines 4) 2006

Natural pigments on barkcloth / 163 x 99cm

Odunege 1 (Jungle vines 1) 2006

Natural pigments on barkcloth / 142 x 114cm / Acc. 2007.209-210 / Purchased 2007. Queensland Art Gallery Foundation

MARVADA MEGHVALL COMMUNITY

India

Pakko embroidery quilt 2003

Quilt: hand embroidered with cotton thread and mirrors on cotton ground / 148 x 226cm / Acc. 2007.261 / Purchased 2007. Queensland Art Gallery Foundation Grant

MATHIAS

Papua New Guinea

The angel and the tortoise 1968

Screenprint, ed. 11/50 / 81.4 x 52.8cm (sight) / Gift of Cameron McTavish through the Queensland Art Gallery Foundation 2008

MAYMURU, Galuma

Australia b.1951

Manggalili people

Mungurru VIII 2007

Natural pigments on bark / 153 x 79cm / Acc. 2007.257 / Purchased 2007. Queensland Art Gallery Foundation Grant

MEKAS, Jonas

Lithuania/United States b.1922

Award Presentation to Andy**Warhol** (from 'Visions of Warhol' anthology 1963-90) 1964

Digital Betacam: 12 minutes, black and white, sound

Scenes from the Life of Andy**Warhol** (from 'Visions of Warhol' anthology 1963-90) 1963-90

Digital Betacam: 35 minutes, colour, sound / Acc. 2007.279.002-003 / Purchased 2007. Queensland Art Gallery Foundation



Genevieve Grieves

Australia b. 1976

Worimi people

Picturing the old people (stills) 2006–07

Five-channel video installation

(Mini DV format): 12:55 minutes, colour, sound ed. 1/3 /

Dimensions variable / The Xstrata Coal Emerging Indigenous Art

Award 2007 (winning entry). Purchased 2007 with funds from Xstrata

Coal through the Queensland Art Gallery Foundation

MELLOR, Danie

Australia b.1971
Mamu/Ngadjonji people
How the heart was won 2004–05
Mezzotint, AP / Triptych:
87 x 200cm (overall comp.) /
Acc. 2007.208 / Purchased 2007.
Queensland Art Gallery
Foundation

MENKEN, Marie

United States 1909–70
Andy Warhol (from 'Visions of
Warhol' anthology 1963–90) 1965
Digital Betacam: 18 minutes,
colour, silent / Acc. 2007.279.004 /
Purchased 2007. Queensland Art
Gallery Foundation

MOFFATT, Tracey

Australia/United States b.1960
Beauty (in cream) 1994
Beauty (in wine) 1994
Beauty (in mulberry) 1997
Black and white photograph,
colour tinted in lab during
printing process, ed. 19/20 /
Three sheets: 99.2 x 77.5cm
(each comp., approx.) /
Purchased 2008 with funds
from Xstrata Community
Partnership Program through
the Queensland Art Gallery
Foundation

MUECK, Ron

England b.1958
In bed 2005
Mixed media, ed. 1/1 /
161.9 x 649.9 x 395cm /
Acc. 2008.040 / Purchased
2008. Queensland Art Gallery
Foundation

MURDILNGA, Marina

Australia b.1960
Kunwinjku people
Yawkyawk spirit 2006
Pandanus, cane, bark fibre, natural
dyes / 236 x 49 x 6cm (irreg.) /
Acc. 2007.197 / Purchased 2007.
Queensland Art Gallery
Foundation

MURIATA, Abe

Australia b.1952
Girramay people

Jawun (basket) 2006

Twined lawyer vine / 62 x 42 x
25cm (including handle)

Jawun (basket) painted 2007

Twined lawyer vine with natural
pigments / 70 x 45 x 30cm
(including handle) /
Acc. 2007.248–249 / Purchased
2007. Queensland Art Gallery
Foundation Grant

MURRAY, Janice

Australia b.1966
Tiwi people
Jilamara (from 'Duyfken'
portfolio) 2006
Etching, ed. 12/50 / 40 x 59cm
(comp.) / Acc. 2007.207.005 / Gift
of Rio Tinto Aluminium through
the Queensland Art Gallery
Foundation 2007

MURRAY-WHITE, Clive

Australia b.1946
Smoke sculpture 1971
16mm film: 3:05 minutes
(approx.), black and white,
silent, ed. 1/1 / Acc. 2007.244 /
Gift of the artist through the
Queensland Art Gallery
Foundation 2007

MUTAVA, Sofiya N

India b.1982
Hand-embroidered quilt 2005
Quilt: hand-embroidered cotton,
mirror and metal thread on silk;
polycotton commercial fabrics on
border / 260 x 200cm /
Acc. 2007.260 / Purchased 2007.
Queensland Art Gallery
Foundation Grant

NAMPONAN, Garry

Australia b.1960
Wik-Alkan/Wik-Ngatharr people
Untitled (from 'Duyfken' portfolio)
2006
Etching, ed. 12/50 / 59 x 44cm
(comp.) / Acc. 2007.207.006 /
Gift of Rio Tinto Aluminium
through the Queensland Art
Gallery Foundation 2007

NANNUP, Laurel

Australia b.1943
Binjareb/Nyoongar people
Old spirit of the sea (from
'Duyfken' portfolio) 2006
Etching, hand-coloured,
ed. 12/50 / 60 x 45cm (comp.) /
Acc. 2007.207.010 / Gift of
Rio Tinto Aluminium through
the Queensland Art Gallery
Foundation 2007

NEALE, David

Australia b.1977
Brooch 2007
Aluminium, paint /
6.5 x 9 x 1.8cm
Brooch 2007
Sterling silver, paint /
20.1 x 7.2 x 1cm

Brooch 2007

Sterling silver, paint /
9.1 x 20.8 x 3.2cm /
Acc. 2007.240–242 /
Purchased 2007. Queensland Art
Gallery Foundation Grant

NGAL, Angelina

Australia b.(c.)1947
Anmatyerr people
Arlparra Country 2006
Synthetic polymer paint on linen /
200 x 136cm

NGAL, Kathleen

Australia b.1934
Anmatyerr people
Bush plum country 2006
Synthetic polymer paint on linen /
119 x 198cm

NGAL, Poly

Australia b.1936
Anmatyerr people
Emu seed country 2006
Synthetic polymer paint on linen /
119 x 199cm / Gift of Lauraine
Diggins through the Queensland
Art Gallery Foundation 2008

NGAMANDARA, Terry Wilson

Australia b.1950
Gun-nartpa people

Waterhole at Barlparrarra 2007

Natural pigments on bark /
106 x 81cm / Acc. 2007.251 /
Purchased 2007. Queensland Art
Gallery Foundation

NGUI, Matthew

Singapore b.1962
*Swimming: at least 8 points
of view* 2007

Four-channel video installation,
hard drive and DVD formats: 10:10
minutes, colour, sound, ed. 1/3 /
The Kenneth and Yasuko Myer
Collection of Contemporary Asian
Art. Purchased 2008 with funds
from Michael Simcha Baevski
through the Queensland Art
Gallery Foundation

NONA, Dennis (artist)

Australia b.1973
Kala Lagaw Ya people
TREMBLAY, Theodore
(printer)
Australia b.1952
Yarwarr 2007
Linocut on Hahnemühle
paper, ed. 2/20 /
119.5 x 599.5cm (comp.) /
Purchased 2008 with funds from
Macquarie Bank Foundation
through the Queensland Art
Gallery Foundation

OMEENYO, Fiona

Australia b.1981
Umpila people
Searching for tracks 2007
Synthetic polymer paint
on canvas / 174 x 104cm /
Purchased 2008. Queensland Art
Gallery Foundation Grant

ORSTO, Maria Josette

Australia b.1962
Tiwi people
Ngirringani jilamara 2007
Natural pigments on canvas
120 x 100cm / Acc. 2007.254 /
Purchased 2007. Queensland Art
Gallery Foundation

PAMBEGAN Jr, Arthur Koo-ekka

Australia b.1936
Wik-Mungkan people
Untitled IV [Walken-Aw (Bonefish Story Place) and Kalben (Sacred place in the Flying Fox Story Place) Design] 2007
Natural pigments with acrylic binder on linen / 108 x 175cm

Untitled XIV [Walken-Aw (Bonefish Story Place) and Kalben (Sacred place in the Flying Fox Story Place) Design] 2007

Natural pigments with acrylic binder on linen / 61 x 46cm / Purchased 2008. Queensland Art Gallery Foundation Grant

PEASE, Christopher

Australia b.1969
Minang/Nyoongar people
Thoughts on first contact (from 'Duyfken' portfolio) 2006
Lithograph, ed. 12/50 / 40 x 60cm (comp.) / Acc. 2007.207.007 / Gift of Rio Tinto Aluminium through the Queensland Art Gallery Foundation 2007

Minang Boodjar – Surveying King George Sound (after Louis de Sainson's 'Le Hâvre aux Huîtres dans le Port du Roi Georges' 1833) 2008

Oil, natural pigments and balga (*Xanthorrhoea preisei*) resin on hessian on board / 152 x 230cm / The Xstrata Coal Indigenous Art Collection. Purchased 2008 with funds from Xstrata Coal through the Queensland Art Gallery Foundation

PLATT, Doris

Australia b.1950
Lama-Lama people
Goanna skin 2008
Synthetic polymer paint on canvas 195 x 133cm / Purchased 2008. Queensland Art Gallery Foundation Grant

POLINESS, Kerrie

Australia b.1962
Blue wall drawing #1 2007
Hand-made installation book (177 pages, boxed) for blue felt-tipped marker wall drawing; and oval mirror (hand-cut mirror glass), ed. of 4 / Wall drawing: dimensions variable; instruction book: 30 x 22 x 3cm; mirror: 50 x 35 x 0.5cm / Acc. 2007.243a-b / Purchased 2007. Queensland Art Gallery Foundation

POOTCHEMUNKA, Leonie

Australia b.1962
Wik-Mungkan/Wik-Ngathan people
Moon Sisters Story (from 'Duyfken' portfolio) 2006
Linocut, ed. 12/50 / 40 x 60cm (comp.) / Acc. 2007.207.008 / Gift of Rio Tinto Aluminium through the Queensland Art Gallery Foundation 2007

QUINN, Marc

England b.1964
Portraits of landscapes (series) 2007
Pigment print on 330gsm Somerset Velvet Enhanced paper, ed. 25/59 / Eight sheets: 100 x 75cm (each comp.) / Purchased 2008. Queensland Art Gallery Foundation Appeal

RABARI ARTISANS

India
Dowry bag c.1960s
Cotton, mirrors, silk, beads / 66 x 41cm

Dowry bag c.1960s

Cotton, mirrors, silk, commercial braid / 65.5 x 40cm

Dowry bag c.1960s

Cotton, silk, mirrors, beads / 66 x 41cm

Dowry bag c.1960s

Cotton, silk, mirrors / 42 x 56cm

Dowry bag c.1960s

Cotton, mirrors, silk, button, beads / 50 x 70cm

Dowry bag with appliqué c.1960s

Cotton with cotton appliqué, silk, mashru (hand-woven satin silk fabric) and commercial braid / 60 x 75cm

Large dowry bag c.1960s

Cotton, mirrors, silk, beads / 85 x 85.5cm

Large dowry bag c.1960s

Cotton, mirrors, silk, metal and shells / 85.5 x 65cm

Large dowry bag c.1960s

Cotton, silk, mirrors, shells / 85 x 85cm / Acc. 2007.263-271 / Purchased 2007. Queensland Art Gallery Foundation Grant

REDFORD, Scott

Australia b.1962

Reinhardt's instant painting #9 2008

Synthetic polymer paint, seawater and spraycan enamel with aluminium and stickers / 104 x 224cm / Purchased 2008 with funds from the Estate of Jessica Ellis through the Queensland Art Gallery Foundation

REIHANA, Lisa

New Zealand b.1964

Dandy***Urban warrior******Mau******Ranginui******Diva***

(from 'Digital Marae') 2007
Digital colour print on crystal flex paper on aluminium, ed. 2/5 / Five sheets: 200 x 120cm (each comp.) / Acc. 2008.045-049 / Purchased 2008 with funds from the Estate of Vincent Stack through the Queensland Art Gallery Foundation

RIFAI, Bassam

Palestine/Lebanon/
Australia b.1945

Al Shahadeh II 2006

Synthetic polymer paint on paper / 50.3 x 50cm

Al Mulku Lellah (The dominion that of God) 2006

Synthetic polymer paint on paper / 63.2 x 50.1cm

Kullu Men Alayha Fan 2006

Synthetic polymer paint and gold powder on paper / 74.5 x 58.2cm

Al Shahadeh I 2007

Synthetic polymer paint and gouache on paper / 63.2 x 40.1cm / Acc. 2007.280-283 / Purchased 2007. Queensland Art Gallery Foundation Grant

RONTJI, Lindy (potter)

Australia b.1962

Arrernte (Aranda) people

HERMANNSBURG POTTERS

(pottery workshop)

Australia est. 1990

Sand dunes at Papunya 2007

Hand-built terracotta clay with incised white slip beneath clear glaze / 25 x 21cm (diam.) / Acc. 2007.290 / Purchased 2007. Queensland Art Gallery Foundation Grant

RUBUNTJA, Rona (potter)

Australia b.1970

Arrernte (Aranda) people

HERMANNSBURG POTTERS

(pottery workshop)

Australia est. 1990

Koprillia Day at***Hermannsburg*** 2007

Earthenware, hand-built terracotta clay with underglaze colours and applied decoration / 38 x 30cm (diam.) (complete) / Acc. 2007.288a-b / Purchased 2007. Queensland Art Gallery Foundation Grant

SAINSON, Louis Auguste de

France 1800-unknown

Vue prise au Port Western dans la crique des mangliers 1833

Lithograph with later hand-colouring / 26.2 x 32.2cm

Habitation de pêcheurs de phoques au port Western (Nouvelle Hollande) 1833

Lithograph with later hand-colouring / 26.2 x 32.2cm / Acc. 2007.195-196 / Purchased 2007. Queensland Art Gallery Foundation

SENBERRGS, Jan

Australia b.1939

Going O/S 1990

Synthetic polymer paint on paper / 163 x 136cm / Gift of Charles and Cornelia Goode through the Queensland Art Gallery Foundation 2008

SERICO, Vincent

Australia 1949-2008

Wakka Wakka and Kabi Kabi people

Carnarvon collision (Big map)

2006

Synthetic polymer paint on linen / 203 x 310cm

Cooktown gold miners I-IV 2007

Synthetic polymer paint on linen / Four panels: 80 x 80cm (each) / Acc. 2007.245-246 / Purchased 2007. Queensland Art Gallery Foundation

SEULE, Sepa

Vanuatu b.1983

Popo (from 'Bebellic' portfolio) 2007

Screenprint on Magnani paper, ed. 1/45 / 54 x 76cm (comp.) / Acc. 2008.098 / Purchased 2008. Queensland Art Gallery Foundation

SHEN Shaomin

China b.1956

Red storm (from 'Sunflower' series) 1986

Woodblock print, AP 3/10 / 48.8 x 48.4cm (comp.)

Against the wind

(from 'Sunflower' series) 1986
Woodblock print, AP 3/10 / 49 x 48.2cm (comp.)

(Chimneys in northern China)

1986

Woodblock print, AP 3/10 / 49 x 48.2cm (comp.) / Acc. 2008.080-082 / Gift of Nicholas Jose and Claire Roberts through the Queensland Art Gallery Foundation 2008

SIMIX, Simeon

Vanuatu b.1981

Paw paw/coconut**Paw paw/breadfruit**

(from 'Bebellic' portfolio) 2007
Screenprint on Magnani paper, ed. 1/45 / Two sheets: 76 x 54cm (comp., each) / Acc. 2008.093-094 / Purchased 2008. Queensland Art Gallery Foundation

SMITH, Martin

Australia b.1971

Hell's bells 2007

Giclee print, ed. of 1 / 130 x 90cm

Yellow and very spacey 2007

Giclee print, ed. of 1 / 130 x 90cm / Acc. 2007.238-239 / Purchased 2007. Queensland Art Gallery Foundation Grant

STRIZIC, Mark

Australia b.1928

BHP Whyalla shipbuilding staunchers, 1958

(from 'Industrial forms and faces' series) 1958
Gelatin silver photograph / 26.2 x 34.7cm (comp.)

A view through my window

(from 'Views from my windows' series) 1959
Gelatin silver photograph, ed. 1/1 / 28.1 x 41.9cm (comp.)

View of my opposite neighbours in Francis Street, Richmond, 1959

(from 'Views from my windows' series) 1959, printed 1972 / Gelatin silver photograph / 23.2 x 34.5cm (comp.)

View of my opposite neighbours in Dorcas Street, South Melbourne, 1972

(from 'Views from my windows' series) 1972
Gelatin silver photograph / 34 x 22.8cm (comp., irreg.)

Builder's fence - 2, c.1960

(from 'Melbourne mid century' series) c.1960, printed 1987
Gelatin silver photograph / 36 x 54cm (comp.)

Off Francis Street, Richmond, 1962

(from 'Melbourne mid century' series) 1962
Gelatin silver photograph / 23.4 x 34.9cm (comp.)

Asher Bilu, 1969

(from 'Portrait' series) 1969
Gelatin silver photograph / 34.4 x 25.7cm (comp.)

Barry Humphries, 1968

(from 'Portrait' series) 1968, printed 1999
Gelatin silver photograph / 35.8 x 24.4cm (comp.)

George Mora, 1968

(from 'Portrait' series) 1968, printed 1999
Gelatin silver photograph / 35.9 x 24.8cm (comp.)

John Perceval in his studio - 3, 1967

(from 'Portrait' series) 1967, printed 1994
Gelatin silver photograph / 40.6 x 40.6cm (comp.)

Wesley Stacey in Mark's studio, South Melbourne, 1972

(from 'Portrait' series) 1972
Colour photograph / 36.1 x 54.1cm (comp.)

Charles Blackman, 1968

(from 'Involvement' and 'Portrait' series) 1968
Gelatin silver photograph / 38.3 x 25.8cm (comp.)

A whirlwind axe, 1971

(from 'Children of the streets and their environment' series) 1971, printed 1994
Cibachrome photograph, ed. 1/1 / 28.1 x 42.1cm (comp.)

Pride of possession - 1, 1971

(from 'Children of the streets and their environment' series) 1971, printed 1974
Gelatin silver photograph / 34 x 23.2cm (comp.)

Three Graces of South Melbourne, 1971

(from 'Children of the streets and their environment' series) 1971, printed 1974
Gelatin silver photograph / 23 x 34.2cm (comp.)

Confined playground, 1974

(from 'Children of the streets and their environment' series) 1974
Gelatin silver photograph / 34.2 x 23.3cm (comp.)

Hopscotch under crenellation - 2, 1971

(from 'Children of the streets and their environment' series) 1971, printed 1974
Gelatin silver photograph / 34.1 x 23.2cm (comp.)

Unlikely union in Union Street, South Melbourne, 1971

(from 'Children of the streets and their environment' series) 1971, printed 1974
Gelatin silver photograph / 23.2 x 34.1cm (comp.)

At Kalkalo, off Hume Highway, 1983

(from 'Swatches of the Australian landscape' series) 1983
Cibachrome photograph, ed. 1/1 / 36 x 54cm (comp.) / Acc. 2008.052-070 / Gift of Wilbow Pty Ltd through the Queensland Art Gallery Foundation 2008

SUNFLY, Pauline Nangala
Australia b.1957
Kukatja people
Wilinkarra 2006
Synthetic polymer paint
on linen / 120 x 60cm /
Acc. 2008.028 / Purchased 2008.
Queensland Art Gallery
Foundation

TABACCO, Wilma
Australia b.1953
Hellza poppin 2004
Oil on linen / 183 x 244cm /
Gift of William Nuttall and
Annette Reeves through the
Queensland Art Gallery
Foundation 2008

THOMPSON, Christian
Australia b.1978
Bidjara/Kunja people
Black Gum 1-3
(from 'Australian Graffiti'
series) 2008
Type C photograph, ed.
7/10 / Three sheets: 100 x 100cm
(each comp.) / Purchased 2008.
Queensland Art Gallery
Foundation Grant

TIABE
Papua New Guinea
Accident 1968
Screenprint, ed. 7/50 /
53.5 x 82.8cm (comp.)

Moto bagarap (Motor crash)
1968
Screenprint, ed. 7/50 /
53.5 x 83cm (comp.)

Helicopter 1968
Screenprint, ed. 7/50 /
82.5 x 53.5cm (comp.) /
Gift of Cameron McTavish
through the Queensland Art
Gallery Foundation 2008

TIPOTI, Alick
Australia b.1975
Kala Lagaw Ya people
Kuyku Garpathamai Mabaig
2007
Linocut, ed. 4/45 /
200.2 x 119cm (comp.)

Gabau Aimai Mabigul 2006
Linocut, ed. 6/35 /
80.5 x 300.3cm (comp.) /
Purchased 2008.
Queensland Art Gallery
Foundation Grant

TYNDALL, Peter
Australia b.1951
Fosterville (Sun) 1972
Synthetic polymer paint
on canvas / 129 x 75cm /
Acc. 2008.071 / Gift of
Naomi Milgrom through
the Queensland Art Gallery
Foundation 2008

UNGWANAKA, Rahel (potter)
Australia b.1946
Arrernte (Aranda)/Luritja people
HERMANSBURG POTTERS
(pottery workshop)
Australia est. 1990
Owl 2005
Earthenware, hand-built
terracotta clay with underglaze
colours and applied decoration /
32 x 47cm (diam.) (complete) /
Acc. 2007.250a-b / Purchased
2007. Queensland Art Gallery
Foundation Grant

UNKNOWN
Australia
**A view of the new Post
Office & School of Arts,
Bourbong St. Bundaberg
from Barolin St., Augt. 1st
1891, Queensland** 1891
Watercolour, pencil and wash /
48 x 61cm / Acc. 2007.233 /
Purchased 2007. Queensland Art
Gallery Foundation Grant

UPIA, Stella
Papua New Guinea b.1950
**Sihaé 1 (Sahote clan design
of fruit from the tree 1)** 2006
Natural pigments on bark cloth /
138 x 105cm

**Dahorué & Nionihanoé (Omie
mountains and jungle)** 2006
Natural pigments on barkcloth /
161 x 136cm / Acc. 2007.211-212 /
Purchased 2007. Queensland Art
Gallery Foundation

VON GUÉRARD, Eugene
Austria/Australia
1811-1901
**A view from Daylesford
towards the Pyrenees** c.1864
Oil on canvas / 35.5 x 63.8cm /
Purchased 2008 with funds
from Philip Bacon, AM,
through the Queensland Art
Gallery Foundation

WANG Youshen
China b.1964
Portrait series - Frame
1990
Collage on paper, mounted
in a commercially produced
silk brocade covered concertina
folding Chinese style album
(ceye) / 30 pages:
34 x 26.5cm (each)

**Yu Gong and his later
generations (Yu Gong he
tade zizi sunsun)** 1986
Oil on masonite / 94 x 79cm /
Acc. 2008.083-084 / Gift of
Nicholas Jose and Claire Roberts
through the Queensland Art
Gallery Foundation 2008

WATSON, Jenny
Australia b.1951
Dingo 2001
Synthetic polymer paint on
canvas; synthetic polymer
paint on rabbit glue on Italian
organza over Indian silk; tin toy
with ledge / Silk panel: 150 x
95cm; text panel: 30 x 25cm;
tin toy: 4.5 x 10 x 5cm;
ledge: 1.8 x 14 x 4cm /
Acc. 2007.226a-d / Gift of
Thornquest Investments through
the Queensland Art Gallery
Foundation 2007

WATSON, Judy
Australia b.1959
Waanyi people
grandmother's song 2007
Pigment and pastel on canvas /
196 x 107cm / Acc. 2007.179 /
Purchased 2007 with funds
from Margaret Greenidge
through the Queensland Art
Gallery Foundation and the

Queensland Art Gallery
Foundation Grant

WEIGHT, Greg
Australia b.1946
(Brett Whiteley painting) 1972
Gelatin silver photograph,
ed. 3/5 / 48.5 x 71.3cm (comp.)

(Portrait of Brett Whiteley) 1971
Gelatin silver photograph,
ed. 4/15 / 70 x 47cm (comp.) /
Acc. 2007.228-229 / Gift of
Patrick Corrigan, AM, through
the Queensland Art Gallery
Foundation 2007

WHITELEY, Brett
Australia 1939-92
(Portrait of Francis Bacon) c.1970
Pencil / 33.3 x 25.2cm /
Acc. 2007.227 / Gift of Patrick
Corrigan, AM, through the
Queensland Art Gallery
Foundation 2007

WIRRPANDA, Dhukal
Australia b.1955
Dhudi-Djapu people
Wukidi ga Yingapungapu I 2005
Natural pigments on bark /
145 x 61cm / Acc. 2007.258 /
Purchased 2007. Queensland Art
Gallery Foundation Grant

WONAEAMIRRI, Pedro
Australia b.1974
Tiwi people
Yirrinkiri Jilamara (from
'Duyfken' portfolio) 2006
Lithograph, ed. 12/50 /
60 x 45cm (comp.) /
Acc. 2007.207.009 / Gift of
Rio Tinto Aluminium through
the Queensland Art Gallery
Foundation 2007

YUMBULUL, Terry Dhurritjini
Australia b.(c.)1950
Djangu people
Nguluwadu totem 2006
Wood (cypress pine) with
synthetic polymer paint /
100 x 9cm (diam.) (excluding
base) / Gift of Lauraine Diggins
through the Queensland Art
Gallery Foundation 2008

YUNUPINGU, Djalinda

Australia b.1954

Gumatj people

Gawarrk (Woman turned into rock) (from 'Duyfken'

portfolio) 2006

Linocut, ed. 12/50 / 40 x 60cm

(comp.) / Acc. 2007.207.002 /

Gift of Rio Tinto Aluminium through the Queensland Art Gallery Foundation 2007

YUNUPINGU, Gulumbu

Australia b.1945

Gumatj people

Ganyu (Stars) 2007

Natural pigments on bark /

192 x 74cm / Purchased 2008 with

funds from the Estate of Jessica

Ellis through the Queensland Art

Gallery Foundation

ZHU Weibing

China b.1971

JI Wenyu

China b.1959

People holding flowers 2007

Acrylic paint on resin; velour, steel

wire, dacron, lodestone and cotton /

400 pieces: 102 x 17 x 11cm (each) /

Acc. 2008.042.001–400 /

The Kenneth and Yasuko Myer

Collection of Contemporary Asian

Art. Purchased 2008 with funds

from Michael Simcha Baevski

through the Queensland Art

Gallery Foundation

ZUBERI, Mahreen Asif

Pakistan b.1981

Doing Krishna 2006

Doing Krishna 2006

Doing Krishna 2006

Doing Krishna 2006

Doing Krishna 2006

Doing Krishna 2006

Doing Krishna 2006

Gouache and watercolour on wasli

paper / Seven sheets: 25.4 x 33cm

(each) / Acc. 2007.272–278 /

Purchased 2007. Queensland Art

Gallery Foundation

Financial Statements

Income Statement

for the year ended 30 June 2008

	Note	2008 \$'000	2007 \$'000
Income			
Revenue			
Government contributions and grants		500	500
Donations		7,117	1,496
Investment income	2	697	612
Interest		94	45
Functions		114	68
Realised gain on investments at fair value through profit and loss		-	330
Unrealised gain on investments at fair value through profit and loss		-	2,186
Services received at below fair value		251	283
Total Income		8,773	5,520
Expenses			
Donations to Queensland Art Gallery	3	4,570	4,381
Supplies and services	4	251	134
Depreciation		1	1
Other expenses		56	67
Net unrealised loss and realised gain on investments at fair value through profit and loss		2,054	-
Services received free of charge		251	283
Total Expenses		7,183	4,866
Operating Surplus		1,590	654

The accompanying notes form part of these statements

Balance Sheet

as at 30 June 2008

	Note	2008 \$'000	2007 \$'000
Current Assets			
Cash and cash equivalents	5	4,828	528
Other financial assets	6	457	23
Receivables	7	258	409
Total Current Assets		5,543	960
Non Current Assets			
Other financial assets	6	11,650	15,291
Plant and equipment	8	7	8
Total Non Current Assets		11,657	15,299
Total Assets		17,200	16,259
Current Liabilities			
Payables	9	419	1,068
Total Current Liabilities		419	1,068
Total Liabilities		419	1,068
Net Assets		16,781	15,191
Equity			
Retained surpluses		16,781	15,191
Total Equity		16,781	15,191

The accompanying notes form part of these statements

General Information

This financial report covers the Queensland Art Gallery Foundation.

The Queensland Art Gallery Foundation is deemed to be a controlled entity of the Queensland Art Gallery.

The head office and principal place of business of the Foundation is:
Queensland Art Gallery
Gallery of Modern Art
Stanley Place
South Brisbane Qld 4101

A description of the nature of the Foundation's operations and its principal activities is included in the notes to the financial statements.

For information in relation to the Foundation's financial report please call (07) 3840 7326, email colin.diachkoff@qag.qld.gov.au, or visit the Queensland Art Gallery's website www.qag.qld.gov.au

Statement of Changes in Equity

for the year ended 30 June 2008

	Retained Surpluses	
	2008 \$'000	2007 \$'000
Balance 1 July	15,191	14,537
Operating Surplus	1,590	654
Balance 30 June	16,781	15,191

The accompanying notes form part of these statements

Cash Flow Statement

for the year ended 30 June 2008

	Note	2008 \$'000	2007 \$'000
Cash flows from operating activities			
Inflows:			
Government contributions and grants		500	500
Donations and functions income		6,126	1,003
Interest		94	44
Investment Income		1,230	1,058
Dividends		7	6
GST collected from customers		152	63
GST input tax credits from ATO		94	79
Outflows:			
Payments to Queensland Art Gallery		(4,166)	(2,763)
Supplies and services		(251)	(122)
GST paid to suppliers		(109)	(65)
GST remitted to ATO		(82)	(79)
Other		(35)	(53)
Net cash from operating activities	10	3,560	(329)
Cash flows from investing activities			
Inflows:			
Proceeds from sale of investments		2,474	–
Outflows:			
Payments for investments		(1,300)	–
Payments for property, plant and equipment		–	(9)
Net cash provided by (used in) investing activities		1,174	(9)
Net increase (decrease) in cash held		4,734	(338)
Cash at beginning of financial year		551	889
Cash at end of financial year	5,6	5,285	551

The accompanying notes form part of these statements

Notes To and Forming Part of the Financial Statements 2007–08

Objectives and Principal Activities of the Foundation

The Queensland Art Gallery Foundation's principal activities in the course of the financial year were to assist the Board of Trustees of the Queensland Art Gallery to maintain, improve and develop the State Collection of works of art and the operations of the Queensland Art Gallery.

1 a] Basis of Accounting

The financial statements have been prepared in accordance with Australian Equivalents to International Financial Reporting Standards (AEIFRS).

This financial report is a general purpose financial report and has been prepared in accordance with the Australian Accounting Standards and other prescribed requirements.

Except where stated, the historical cost convention is used.

b] The Reporting Entity

The financial statements include the value of all revenues, expenses, assets, liabilities and equity of the Queensland Art Gallery Foundation.

c] User Charges and Fees

User charges and fees controlled by the Foundation are recognised as revenues when invoices for the related services are issued. User charges and fees are controlled by the Foundation where they can be deployed for the achievement of Foundation objectives.

d] Grants and Contributions

Grants, contributions, donations and gifts that are non-reciprocal in nature are recognised as revenue in the year in which the Foundation obtains control over them. Where grants are received that are reciprocal in nature, revenue is accrued over the term of the funding arrangements.

e] Cash and Cash Equivalents

For the purposes of the Balance Sheet and the Cash Flow Statement, cash assets include all cash and cheques received but not banked at 30 June as well as deposits at call with financial institutions. It also includes investments with short periods to maturity that are readily convertible to cash on hand at the Foundation's or issuer's option and that are subject to a low risk of changes in value.

f] Receivables

Trade debtors are recognised at the nominal amounts due at the time of sale or service delivery. Settlement on these amounts is required within 30 days from invoice date.

The collectability of receivables is assessed periodically with provision being made for impairment.

g] Acquisitions of Assets

Actual cost is used for the initial recording of all non-current physical and intangible asset acquisitions. Cost is determined as the value given as consideration plus costs incidental to the acquisition, including all other costs incurred in getting the assets ready for use.

h] Plant and Equipment

Items of plant and equipment with a value equal to or in excess of \$5,000 are recognised for financial reporting purposes in the year of acquisition.

Items of with a lesser value are expensed in the year of acquisition.

Plant and equipment is measured at cost. The carrying amount for plant and equipment at cost should not materially differ from their fair value.

i] Depreciation of Plant and Equipment

Plant and equipment is depreciated on a straight-line basis so as to allocate the net cost or revalued amount of each asset, less its estimated residual value, progressively over its estimated useful life to the Foundation.

Where assets have separately identifiable components that are subject to regular replacement, these components are assigned useful lives distinct from the asset to which they relate and are depreciated accordingly.

Any expenditure that increases the originally assessed capacity or service potential of an asset is capitalised and the new depreciable amount is depreciated over the remaining useful life of the asset to the Foundation.

The Foundation has only one class of depreciable asset under plant and equipment, motor vehicles, and the depreciation rate of 20% was used.

j] Impairment of Non-Current Assets

All non-current physical assets are assessed for indicators of impairment on an annual basis. If an indicator of possible impairment exists, the Foundation determines the asset's recoverable amount. Any amount by which the asset's carrying amount exceeds the recoverable amount is recorded as an impairment loss.

The asset's recoverable amount is determined as the higher of the asset's fair value less costs to sell and depreciated replacement cost.

An impairment loss is recognised immediately in the Income Statement, unless the asset is carried at a revalued amount. When an asset is measured at a revalued amount,

the impairment loss is offset against the asset revaluation reserve of the relevant class to the extent available.

Where an impairment loss subsequently reverses, the carrying amount of the asset is increased to the revised estimate of its recoverable amount, but so that the increased carrying amount does not exceed the carrying amount that would have been determined had no impairment loss been recognised for the asset in prior years. A reversal of an impairment loss is recognised as income, unless the asset is carried at a revalued amount, in which case the reversal of the impairment loss is treated as a revaluation increase.

k] Other Financial Assets

Included in the non-current assets are State Government Contributions and retained donations of \$7.8M. These funds are restricted as per an agreement with the State Government which states that only the interest derived from these funds can be used by the Foundation for acquisitions or the exhibition programme of the Gallery.

These funds are carried at market value similar to managed funds and listed shares.

The Foundation's other non-current investments are carried at market value. Changes in market value are recognised as a revenue or expense in determining the net result for the period.

Interest and dividend revenues are recognised on an accrual basis.

l] Financial Instruments Recognition

Financial assets and financial liabilities are recognised in the Balance Sheet when the Foundation becomes party to the contractual provisions of the financial instrument.

Classification

Financial instruments are classified and measured as follows:

- Cash and cash equivalents – held at fair value through profit and loss
- Managed funds and shares – held at fair value through profit and loss
- Receivables – held at amortised cost
- Payables – held at amortised cost

The Foundation does not enter into derivative transactions for speculative purposes

All disclosures relating to the measurement basis and financial risk management of other financial instruments held by the Foundation are included in Note 13.

m] Payables

Trade creditors are recognised upon receipt of the goods or services ordered and are measured at the agreed purchase/contract price, gross of applicable trade and other discounts. Amounts owing are unsecured and are generally settled on 30 day terms.

n] Services Provided by the Queensland Art Gallery

Salaries including on-costs for the staff supporting the Foundation plus other corporate support costs including office accommodation, computer equipment and other operating expenses have been met by the Queensland Art Gallery and are recognised in the accounts as in-kind services.

o] Taxation

The Foundation's activities are exempt from Commonwealth taxation with the exception of Fringe Benefits Tax and Goods and Services Tax (GST). As such, GST credits receivable from/ and payable to the ATO are recognised and accrued.

p] Issuance of Financial Statements

The financial statements are authorised for issue by the

President and Secretary at the date of signing the Management Certificate.

q] Judgements and Assumptions

The Foundation has made no judgements or assessments which may cause a material adjustment to the carrying amounts of assets and liabilities within the next reporting period.

r] Rounding and Comparatives

Amounts included in the financial statements are in Australian dollars and have been rounded to the nearest \$1,000 or, where that amount is \$500 or less to zero, unless disclosure of the full amount is specifically required.

Comparative information has been restated where necessary to be consistent with disclosures in the current reporting period.

s] New and Revised Accounting Standards

No Australian accounting standards and interpretations issued or amended and applicable for the first time in the 2007–08 financial year have an effect on the Foundation. Also the Foundation has not voluntarily changed any of its accounting policies.

The Foundation is not permitted to early adopt a new accounting standard ahead of the specified commencement date unless approval is obtained from Treasury. Consequently, the Foundation has not applied the Australian Accounting Standards and interpretations that have been issued but are not yet effective. The Foundation will apply these standards and interpretations in accordance with their respective commencement dates.

At the date of authorization of the financial report, a number of new or amended Australian accounting standards with future commencement dates will not impact on the Foundation until 2009–10. Details of such impacts

are set out below.

AASB 101 *Presentation of Financial Statements* has been revised, such revisions will not impact on the Foundation until 2009–10. This revised standard does not have measurement or recognition implications. Instead, there will be significant changes to the presentation of the Foundation's overall financial performance and position, particularly the content of the Statement of Changes in Equity, and preparation of a new Statement of Comprehensive Income (which will include certain items currently disclosed in the Statement of Changes in Equity, in line with the definition of 'comprehensive income' in the revised AASB 101). It appears that this standard will have no implication for the Foundation as assets are held at cost and not required to be valued.

All other Australian accounting standards and interpretations with future commencement dates are either not applicable to the Foundation, or have no material impact on the Foundation.

	2008 \$'000	2007 \$'000
2. Investment Income		
Distribution	547	487
Interest	23	1
Dividends	8	7
Franking income	119	117
Total	697	612
3. Donations to Queensland Art Gallery		
Acquisitions of works of art	2,176	2,811
Exhibition expenses	2,044	1,270
Donations of interest on government subsidies	300	300
Other	50	–
Total	4,570	4,381
4. Supplies and Services		
Advertising, promotion and public relations	5	1
Functions costs	246	132
Stationery, printing books and publications	–	1
Total	251	134
5. Cash and Cash Equivalents		
Cash at bank and on hand	1,961	55
24 hour call deposits	2,867	473
Total	4,828	528
Deposits at call earned interest at rates between 0% and 7.05% (2006-07: 0% to 6.67%)		
6. Other Financial Assets		
Current		
Deposit notes	457	23
Total	457	23
Non-Current		
Investments in managed funds/shares at fair value through profit and loss	11,650	15,291
Total	11,650	15,291
7. Receivables		
Investment income	258	409
Total	258	409

	2008 \$'000	2007 \$'000
8. Plant and Equipment		
Plant and equipment:		
At cost	9	9
Less: Accumulated depreciation	(2)	(1)
Total	7	8
Plant and equipment is valued at cost in accordance with Queensland Treasury's <i>Non-Current Asset Accounting Policies for the Queensland Public Sector</i> .		
Plant and Equipment Reconciliation		
Carrying amount at 1 July	8	–
Acquisitions	–	9
Depreciation	(1)	(1)
Carrying amount at 30 June	7	8
9. Payables		
GST receivable	(25)	(8)
GST payable	74	5
	49	(3)
Trade Creditors	370	1,071
Total	419	1,068
10. Reconciliation of Operating Surplus to Net Cash Provided by (Used in) Operating Activities		
Operating surplus	1,590	654
Non-cash items:		
Loss/(Gain) on investments at fair value through profit and loss	2,467	(1,863)
Depreciation expense	1	1
Change in assets and liabilities		
Decrease/(Increase) in GST input tax credits receivable	(17)	10
Decrease/(Increase) in other receivables	151	(177)
(Decrease)/Increase in GST payable	69	(15)
(Decrease)/Increase in accounts payable	(701)	1,061
Net cash provided by (used in) operating activities	3,560	(329)

	Note	2008 \$'000	2007 \$'000
11. Contingent Liabilities			
There are no known significant contingent liabilities at 30 June 2008			
12. Transactions with Other Related Parties			
During the year the Queensland Art Gallery Foundation made donations of interest on the government subsidy received, exhibition costs and acquisitions of works of art to the Queensland Art Gallery.		4,570	4,381
13. Financial Instruments			
a) Categorisation of Financial Instruments			
The Foundation's activities expose it to a variety of financial risks as noted below. These are managed by the Investment sub-committee in accordance with the Fund Management Objectives and Strategies Policy approved by the Council of the Queensland Art Gallery Foundation. The Foundation has the following categories of financial assets and financial liabilities:			
Financial Assets			
Cash and cash equivalents		4,828	528
Managed funds and shares	5	12,107	15,314
Receivables	6	258	409
Total	7	17,193	16,251
Financial Liabilities			
Payables		419	1,068
Total	9	419	1,068

Credit Risk Exposure

b) Credit risk exposure refers to the situation where the Foundation may incur financial loss as a result of another party to a financial instrument failing to discharge their obligation.

The maximum exposure to credit risk at balance date in relation to each class of recognised financial assets is the carrying amount of those assets inclusive of any provisions for impairment.

The following table represents the Foundation's maximum exposure to credit risk based on contractual amounts net of any allowances:

	Note	2008 \$'000	2007 \$'000
Maximum Exposure to Credit Risk			
Financial Assets			
Cash and cash equivalents	5	4,828	528
Managed funds and shares	6	12,107	15,314
Receivables	7	258	409
Total		17,193	16,251

No collateral is held as security and no credit enhancements relate to financial assets held by the Foundation.

No financial assets and financial liabilities have been offset and presented net in the Balance Sheet. Cash and cash equivalent investments are held with a financial institution with a Standard and Poor's short term credit rating of A-1+.

The other investments are held in either managed funds of shares, which have been assessed for credit risk by the Investment sub-committee.

The method for calculating any provisional impairment for risk is based on past experience, current and expected changes in economic conditions and changes in credit ratings.

No financial assets have had their terms renegotiated so as to prevent them from being past due or impaired, and are stated at the carrying amounts as indicated.

Aging of past due but not impaired as well as impaired financial assets are disclosed in the following tables:

CONTRACTUAL REPRICING MATURITY DATE

	Not Overdue \$'000	Overdue Less than 30 Days \$'000	Overdue 30–60 Days \$'000	Overdue 61–90 Days \$'000	Overdue More than 90 Days \$'000	Total \$'000	Total Financial Assets \$'000
<i>2008 Financial Assets Past Due But Not Impaired</i>							
Financial Assets							
Receivables	–	258	–	–	–	258	258
Total	–	258	–	–	–	258	258
<i>2007 Financial Assets Past Due But Not Impaired</i>							
Financial Assets							
Receivables	–	409	–	–	–	409	409
Total	–	409	–	–	–	409	409
<i>2008 Impaired Financial Assets</i>							
Financial Assets							
Receivables	–	–	–	–	–	–	–
Total	–	–	–	–	–	–	–
<i>2007 Impaired Financial Assets</i>							
Financial Assets							
Receivables	–	–	–	–	–	–	–
Total	–	–	–	–	–	–	–

c) Liquidity Risk

Liquidity risk is the risk that an entity will encounter difficulty in meeting obligations associated with financial liabilities. This risk is controlled through the Foundation's investment in financial instruments, which under normal market conditions are readily convertible to cash.

The Foundation is exposed to liquidity risk in respect of its payables.

The Foundation also manages exposure to liquidity risk by ensuring that sufficient funds are held to meet supplier obligations as they fall due. This is achieved by ensuring that minimum levels of cash are held within the various bank accounts so as to match the expected duration of the various supplier liabilities.

The following table sets out the liquidity risk of financial liabilities held by the Foundation. It represents the contractual maturity of financial liabilities, calculated based on cash flows relating to the repayment of the principal amount outstanding at balance date.

2008 Payable in:					
	Note	< 1Yr \$'000	1-5 Yrs \$'000	> 5 Yrs \$'000	Total \$'000
Financial Liabilities					
Payables					
Total	9	419	–	–	419
		419	–	–	419

2007 Payable in:					
	Note	< 1Yr \$'000	1-5 Yrs \$'000	> 5 Yrs \$'000	Total \$'000
Financial Liabilities					
Payables		1,068	–	–	1,068
Total	9	1,068	–	–	1,068

d) Market Risk

Market risk is the risk that changes in market prices, such as foreign exchange rates, interest rates and equity prices will affect the Foundation's income or the value of its holdings of financial instruments. The Foundation Investment sub-committee actively monitor investments to ensure overall exposure of the portfolio is within acceptable levels.

In respect of the managed funds and shares, the Foundation is subject to domestic and international equities market fluctuations. While the Foundation does not trade in foreign currency, it is indirectly exposed to movements in foreign exchange rates through its funds held in the international market.

The Foundation is exposed to interest rate risk through its cash deposited in interest bearing accounts and managed fund investments. The Foundation does not undertake any hedging in relation to interest rate risk.

Other Market Sensitivity Analysis

The following other market risk sensitivity analysis is based on a report similar to that which would be provided to management, depicting the outcome to profit and loss if the market changed by +/- 10% from the year-end rates applicable to the Foundation's financial assets.

With all other variables held constant, the Foundation would have a surplus and equity increase/(decrease) of \$1,211,000 (2007: \$1,531,000). This is mainly attributable to the Foundation's exposure to other market risks on its managed funds and shares.

The disclosures are prepared on the basis of direct investment and not on a look through basis. Consequently, interest rate risk and foreign currency rate risk of funds are not separately disclosed however are reflected in the price risk.

2008 Other Market Price Risk

Financial Instruments	Carrying Amount \$'000	-10%	+10%
		Profit \$'000	Profit \$'000
Managed Funds and Shares	12,107	(1,211)	1,211
Overall Effect on Profit		(1,211)	1,211

2007 Other Market Price Risk

Financial Instruments	Carrying Amount \$'000	-10%	+10%
		Profit \$'000	Profit \$'000
Managed Funds and Shares	15,314	(1,531)	1,531
Overall Effect on Profit		(1,531)	1,531

Interest Rate Sensitivity Analysis

The following interest rate sensitivity analysis is based on a report similar to that which would be provided to management, depicting the outcome to profit and loss if interest rates would change by +/- 1% from the year-end rates applicable to the Foundation's financial assets and liabilities. With all other variables held constant, the Foundation would have a surplus and equity increase/(decrease) of \$86,000 (2007: \$29,000). This is mainly attributable to the Foundation's exposure to variable interest rates on its managed funds and shares.

2008 Interest Rate Risk

Financial Instruments	Carrying Amount \$'000	-1%	+1%
		Profit \$'000	Profit \$'000
Cash	4,828	(48)	48
Managed Funds and Shares	3,820	(38)	38
Overall Effect on Profit & Equity		(86)	86

2007 Interest Rate Risk

Financial Instruments	Carrying Amount \$'000	-1%	+1%
		Profit \$'000	Profit \$'000
Cash	528	(5)	5
Managed Funds and Shares	2,405	(24)	24
Overall Effect on Profit & Equity		(29)	29

Fair Value

The fair value of financial assets and liabilities is determined as follows:

– The carrying amount of cash, cash equivalents, receivables, payables approximate their fair value and are not disclosed separately below.


The carrying amounts of all financial assets and financial liabilities are representative of their fair value.

**Certificate of the
Queensland Art Gallery Foundation**

These general purpose financial statements have been prepared in accordance with the Australian Accounting Standards and other prescribed requirements. We certify that in our opinion:

a) The prescribed requirements for establishing and keeping the accounts have been complied with in all material respects; and

b) the statements have been drawn up so as to present a true and fair view, in accordance with prescribed accounting standards, of the transactions of the Queensland Art Gallery Foundation for the financial year ended 30 June 2008 and of the financial position of the Queensland Art Gallery Foundation as at 30 June 2008.



Mr TV Fairfax, AM
President
29 August 2008



Mr CB Diachkoff
Secretary
29 August 2008

Independent Auditor's Report

To the Trustees and Members of Queensland Art Gallery Foundation

REPORT ON THE FINANCIAL REPORT

I have audited the accompanying financial report of the Queensland Art Gallery Foundation, which comprises the balance sheet as at 30 June 2008, and the income statement, statement of changes in equity and cash flow statement for the year ended on that date, a summary of significant accounting policies, other explanatory notes, and the certificate given by the President and the Secretary of the Queensland Art Gallery Foundation.

The Trustees' Responsibility for the Financial Report

The Trustees are responsible for the preparation and fair presentation of the financial report in accordance with the Australian Accounting Standards (including the Australian Accounting Interpretations). This responsibility includes establishing and maintaining internal controls relevant to the preparation and fair presentation of the financial report that is free from material misstatement, whether due to fraud or error; selecting and applying appropriate accounting policies; and making accounting estimates that are reasonable in the circumstances.

Auditor's Responsibility

My responsibility is to express an opinion on the financial report based on the audit. The audit was conducted in accordance with the *Auditor-General of Queensland Auditing Standards*, which incorporate Australian Auditing Standards. These Auditing Standards require compliance with relevant ethical requirements relating to audit engagements and that the audit is planned and performed to obtain reasonable assurance whether the financial report is free of material misstatement.

An audit involves performing procedures to obtain audit evidence about the amounts and disclosures in the financial report. The procedures selected depend on the auditor's judgement, including the assessment of risks of material misstatement in the financial report, whether due to fraud or error. In making those risk assessments, the auditor considers internal control relevant to the entity's preparation and fair presentation of the financial report in order to design audit procedures that are appropriate in the circumstances, but not for the purpose of expressing an opinion on the effectiveness of the entity's internal control. An audit also includes evaluating the appropriateness of accounting policies and the reasonableness of accounting estimates made by the trustees, as well as evaluating the overall presentation of the financial report.

I believe that the audit evidence obtained is sufficient and appropriate to provide a basis for my audit opinion.

Independence

The *Financial Administration and Audit Act 1977* promotes the independence of the Auditor-General and QAO authorised auditors. The Auditor-General is the auditor of all Queensland public sector entities and can only be removed by Parliament.

The Auditor-General may conduct an audit in any way considered appropriate and is not subject to direction by any person about the way in which audit powers are to be exercised. The Auditor-General

has for the purposes of conducting an audit, access to all documents and property and can report to Parliament matters which in the Auditor-General's opinion are significant.

Auditor's Opinion

In accordance with the *Financial Administration and Audit Act 1977* and the provisions of the Constitution of the Queensland Art Gallery Foundation dated 11 December 1979, I have audited the Foundation's financial report, and –

a] I have received all the information and explanations which I have required; and

b] in my opinion, the financial report presents fairly, in all material respects, the financial position of the Queensland Art Gallery Foundation as at 30 June 2008, and its financial performance and cash flows for the year then ended in accordance with Australian Accounting Standards (including Australian Accounting Interpretations).



D ADAMS, CPA
as Delegate of the Auditor-General of Queensland
Queensland Audit Office, Brisbane





Her Excellency the Governor of Queensland Ms Quentin Bryce, AC, Mr Tim Fairfax, AM, and Mr Philip Bacon, AM, at the Annual Foundation Dinner, 10 May 2008, Gallery of Modern Art.